

FILED *LL*  
RECEIVED

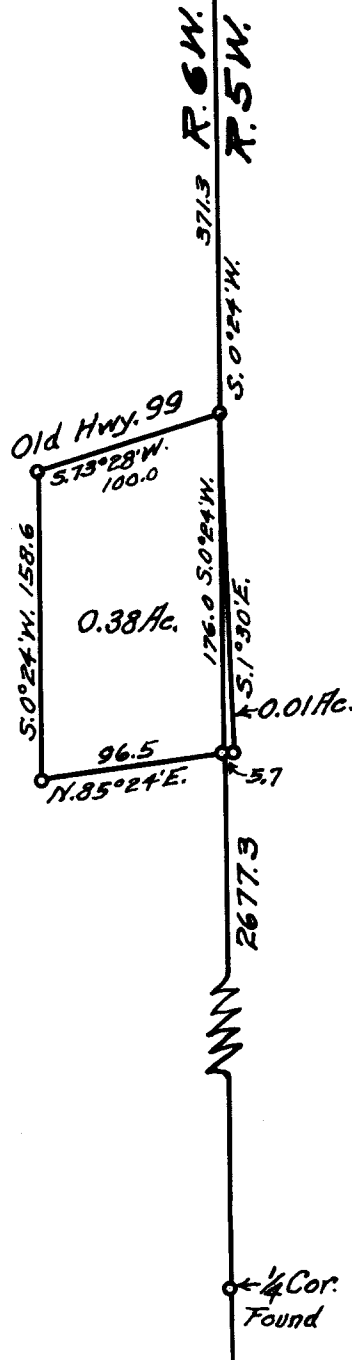
MAY 18 1964

COUNTY SURVEYOR  
DOUGLAS COUNTY, ORE.



Var. 19°30'

24 19  
25 30  
Found



REGISTERED  
OREGON  
LAND SURVEYOR  
*Geo. J. Wenderoth*  
MARCH 10, 1944  
George J. Wenderoth  
3

COUNTY SURVEYOR'S OFFICE  
DOUGLAS COUNTY, OREGON.  
SURVEY FOR  
ANDREW L. OWENS  
IN SECTION 25, T. 32 S., R. 6 W. W.M.  
GEO. J. WENDEROTH, DEPUTY May 1964  
SCALE 1" = 100 ft.

COUNTY SURVEYORS FILE DATA  
DO NOT REMOVE FROM OFFICE

P. C. S. File No. 53/43-4