

COUNTY SURVEYOR'S OFFICE
DOUGLAS COUNTY OREGON

SURVEY FOR DEED DESCRIPTION
SECTION 29, T27S., R.4W. W.M.

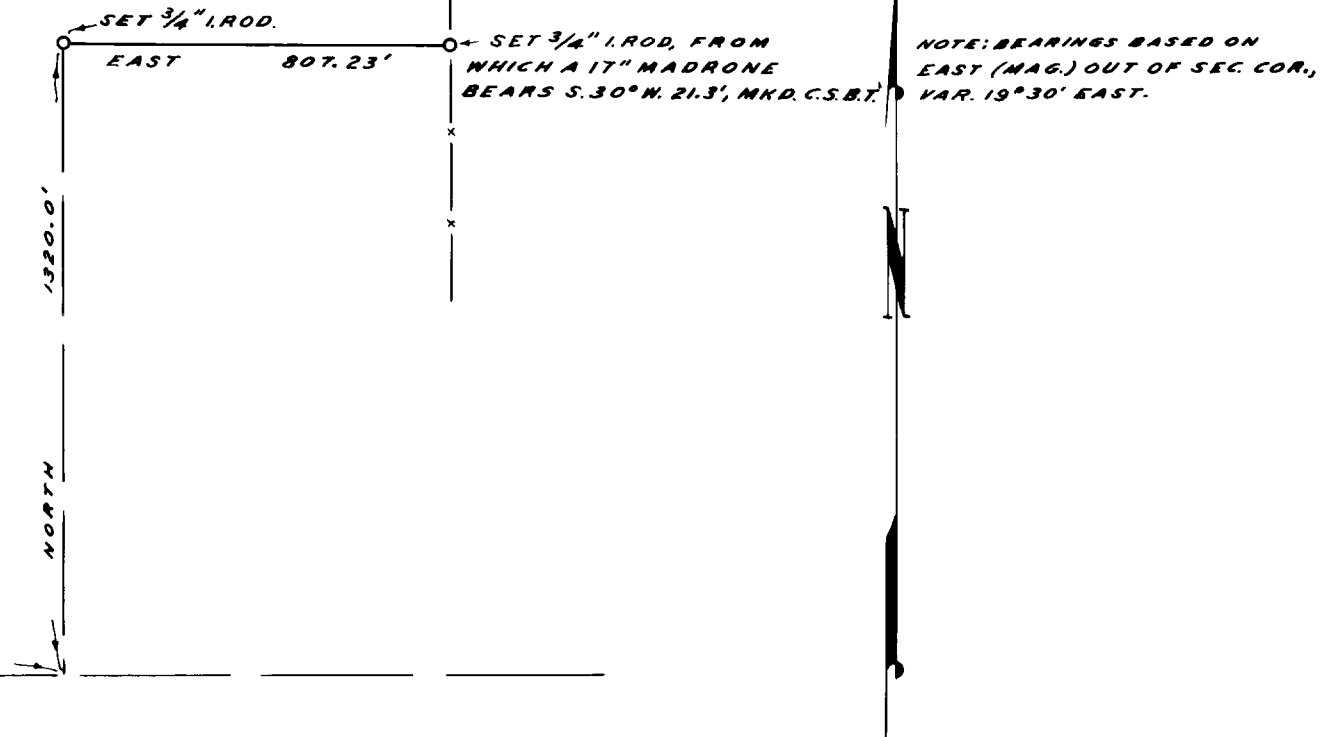
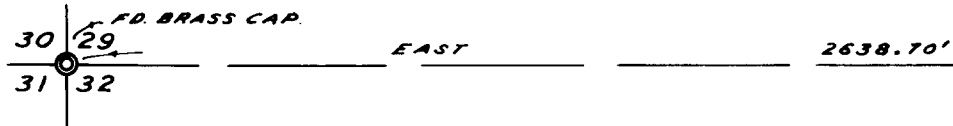
FRED M. DARBY COUNTY SURVEYOR
SURVEYED OCT. 31, 1963 BY
MILO E. GODFREY - DEPUTY SCALE 1"=400'
SURVEYED FOR HOWARD HATFIELD & JAMES CLARK

COUNTY SURVEYORS FILE DATA
DO NOT REMOVE FROM OFFICE

REGISTERED
OREGON
LAND SURVEYOR

Milo E. Godfrey

MAY 13, 1960
MILO E. GODFREY
496



CS FILE FOLDER

CONTAINS

MORE

INFORMATION