

DIETZGEN NO. 385-6

DET N 1/16, S 1/16 & 1/4 COR.
E 1/16 T 28 S RFW.

AUG. 5 - 1963

J. B.
M. D.
D. J.

J. MARKHAM

C.S. File No. 53/32

RENEW $\frac{1}{4}$ COR. ^{By PROP. MEAS.} 17/16 T285 RAW

WE DO NOT FIND ORIG. BTS.

SEE CS FILE 53/32

SET BRASS CAP AT COR. MKD.

COUNTY SURVEYORS OFFICE 1963

$\frac{1}{4}$ 517/516 T285 RAW

NEW BTS.

10" CEDAR BEARS 596° W 43°

SCRIBED $\frac{1}{4}$ S 17 CS BT.

26" CEDAR BEARS N 28° W 32.0

SCRIBED $\frac{1}{4}$ S 17 CS BT

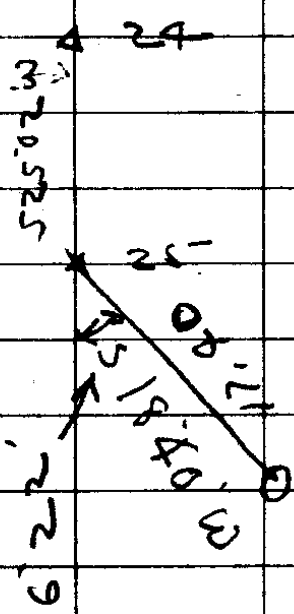
10' CEDAR BEARS 361° E 40.8

SCRIBED $\frac{1}{4}$ S 16 CS BT

21" LAUREL BEARS N 14° E 73.8

SCRIBED $\frac{1}{4}$ S 16 CS BT

2
0
4
5
16
21



W

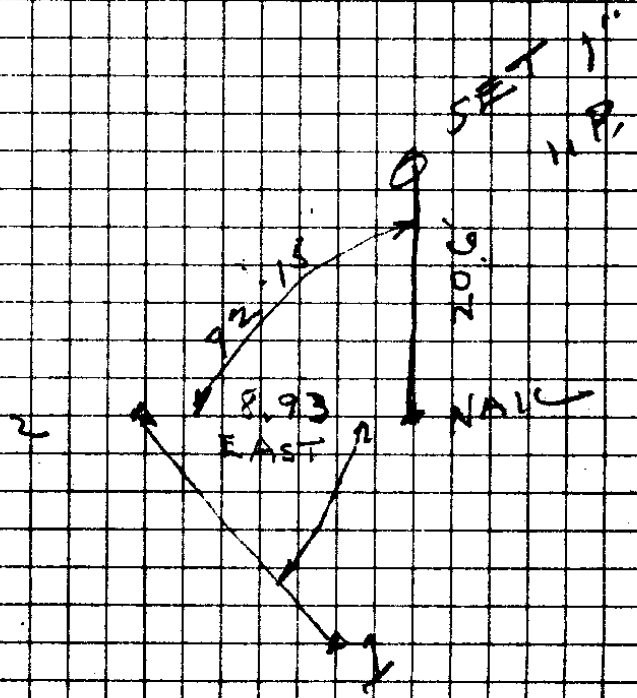
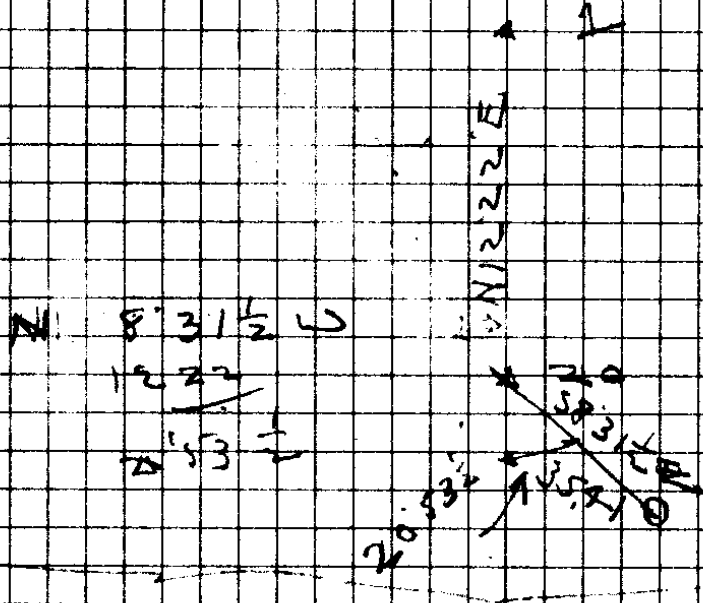
SET N 1/16 S 17/516 T 28524W

ONE - A FILE
WEST BRASS CAB AT COR # AT EAST
JACO. LOG. RD. MAD. COUNTY JURY
ORS OFFICE 1962 NORTH 1/16 S 17/516
T 28524W

SETS 6' R. TIP BEARS S 56' W 35.6'
UNRIBED N 1/16 S 17/516

LAUREL BEARS X 65' W 90.9'
UNRIBED N 1/16 S 17/516

DIETZEN NO. 388-6



C. S. File No. 53/32

SET SOUTH 1/16 S 17 / S 16 T 285 R 9 W

SEE CS FILE

SET BRASS CAP AT COR. \$

MARK SOUTH 1/16 S 17 / S 16 T 285 R 9 W

COUNTY SURVEYORS 1963

FROM WHICH 12" MAPLE 56° W 8.2'

SCRIBED S 1/16 S 17 CS BT

10" MAPLE BEARS N 27° E 41.3'

SCRIBED S 1/16 S 16 CS BT

12" CEDAR BEARS N 19° W 28.4'

SCRIBED S 1/16 S 17 CS BT

NOTE - COR. 31 *

IS ON NORTH

BANK OF SMALL

STREAM

3
0
5
0
5
3

3-05-5
5-50-5
8-56

3E.

8° 56'

