

Ren # 117

RENEW  $\frac{23}{26} \frac{24}{24}$  T 30 S R 4 W

FOUND - ALL TREES AS RECORDED BY MUNKER EXCEPT 56" FIR SHOULD BE N 75° W Not N 70° W ALL DISTANCES CHECK. S W BT Now STUMP. WE DO NOT FIND COR. STONE NOR MOUND. COR. FALLS ON GRAVEL BAR.

SET  $\frac{3}{4}$ " IIR. AT CORNER & SET BRASS CAP 120' WEST, & MARK COUNTY SURVEYOR OFFICE 1963  
WIT. COR. 120' EAST TO  $\frac{523}{526} \frac{529}{525}$   
T 30 S R 4 W

DIETZEN NO. 385-6

NEW BITS  
8" B. FIR BEARS N 36° E 8.5'  
SCRIBED WC S 24 T 30 S R 4 W CS BT  
12" R. FIR BEARS N 25° W 400'  
SCRIBED WC S 23 CS BT  
18" DOUGL. FIR BEARS S 80° W 233'  
SCRIBED WC S 26 CS BT

No TREES TO S E

SET. C - 1963  
J. W. B.  
M. D.

+ X ✓

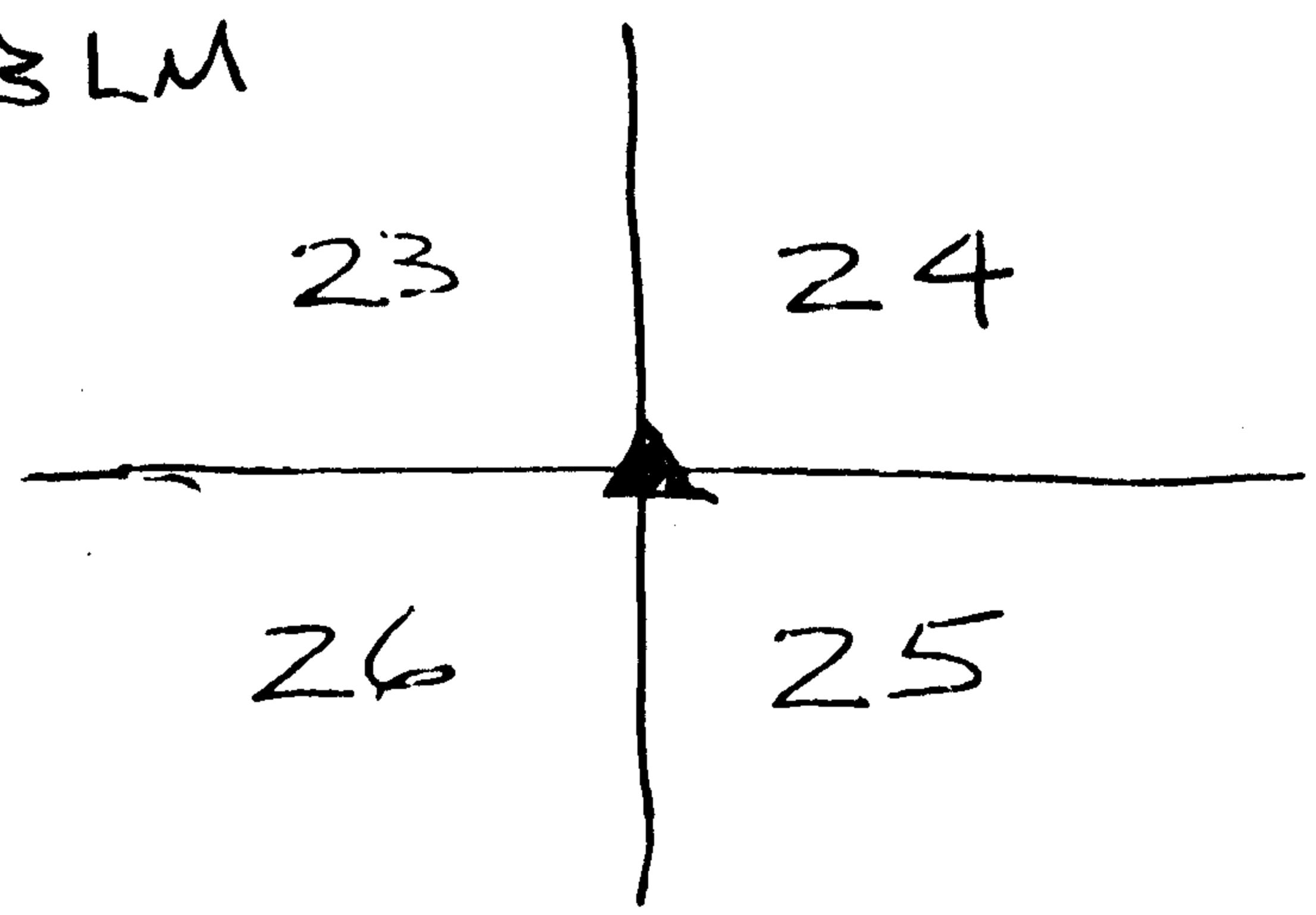
File No. 53/26-111

11/2/81

FRITZ, JAKE CALLED

T30S RAW

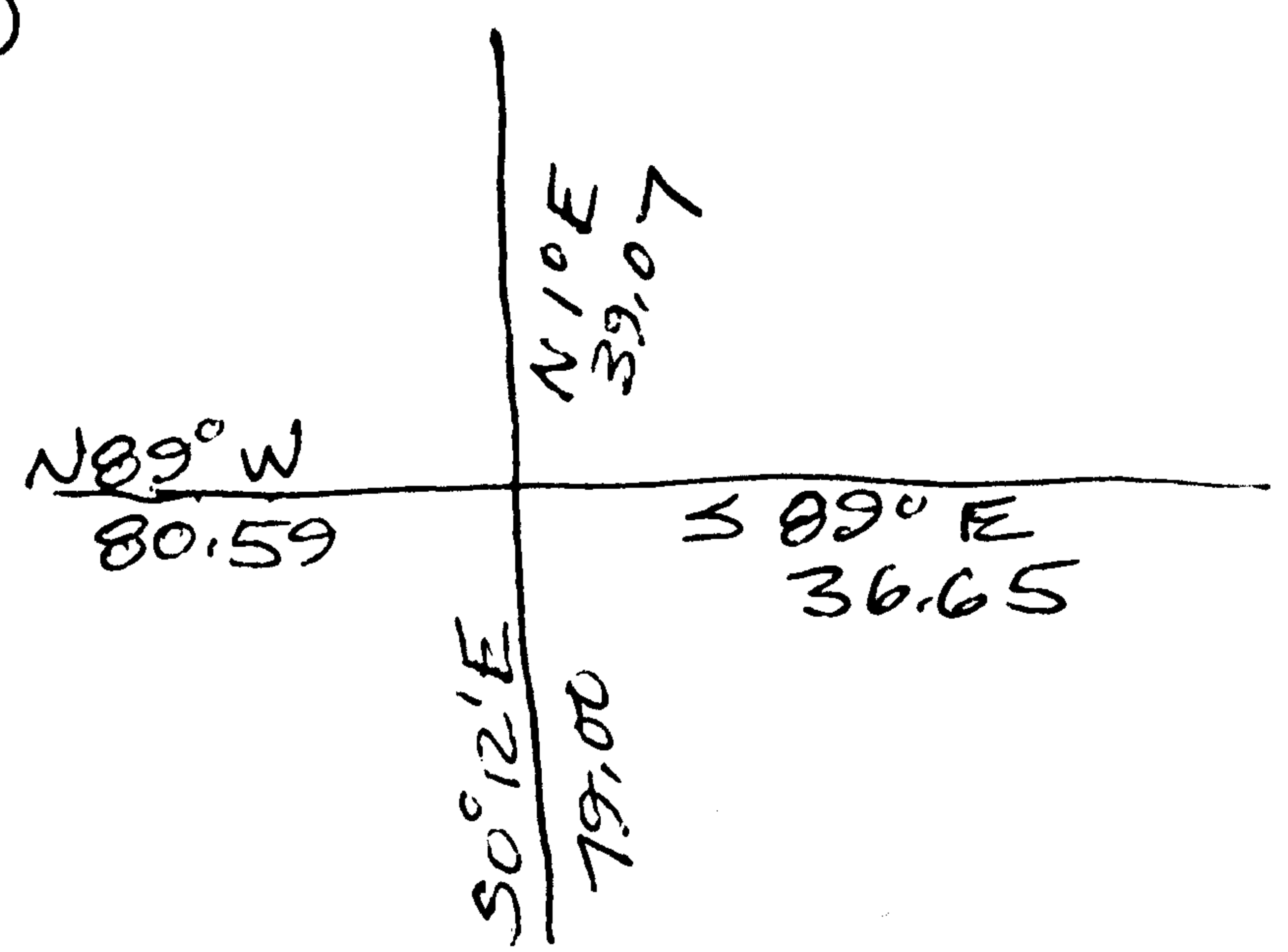
W/4 S. 24 FOUND BY BLM



MUNGER D.P. ▲ IN 1955 FROM "SECTION CORNERS" IN 1963, D.C.S. REHABILITATED & SET W.C.

BLM FOUND W/4 & BECAUSE MUNGER SAID 'SECTION CORNERS', THEY REPROPORTION ITS POSITION TWO WAYS: (1) USING W/4 & (2) MUNGER'S WAY, USING ~~THE~~ NW CORNER. THESE 2 WAYS OF PROPORTIONING YIELD POSITIONS 30 IKS. APART.

USING (1) GIVES A POSITION 1 CH 63 IKS FROM MUNGER'S POSITION. BLM RETRACEMENT DATA FOR (1)



DO YOU HAVE ANY COMMENTS?