

RENEW NW COR D.L.C. 4)

T305 RAW

FOUND - 1/2" I.P. AT COR. (FLUSH)

2 1/2" NOKY DOWN 30" CEDAR

N 1° W 74.6' SHOWS SCARS.  $R_m = 28$

NEW BTS.

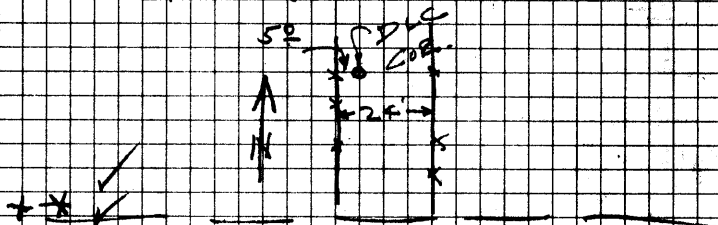
6" CEDAR BEARS N 81° E 199'

SCRIBED NW CL 47 CS BT

5" CEDAR BEARS S 32° E 358'

SCRIBED NW CL 47 CS BT

COR. THUS



RENEW 1/4 514 T305 RAW

FOUND - 1 1/2" I.P. AT COR, ~~IN~~ BOTH BTS.  
AS RECORDED - 1957 - SE BT DEAD  
SW BT DOWN.

NEW BTS.

9" LAUREL BEARS S 23° W 195'  
SCRIBED 1/4 55 CS BT

9" W. FIR BEARS S 39° E 257'  
SCRIBED 1/4 54 CS BT

HXV ✓  
Rm. 121

AUG. 13 - 1963

U.S.

T3

C.S. FILE NO. 53/26-90