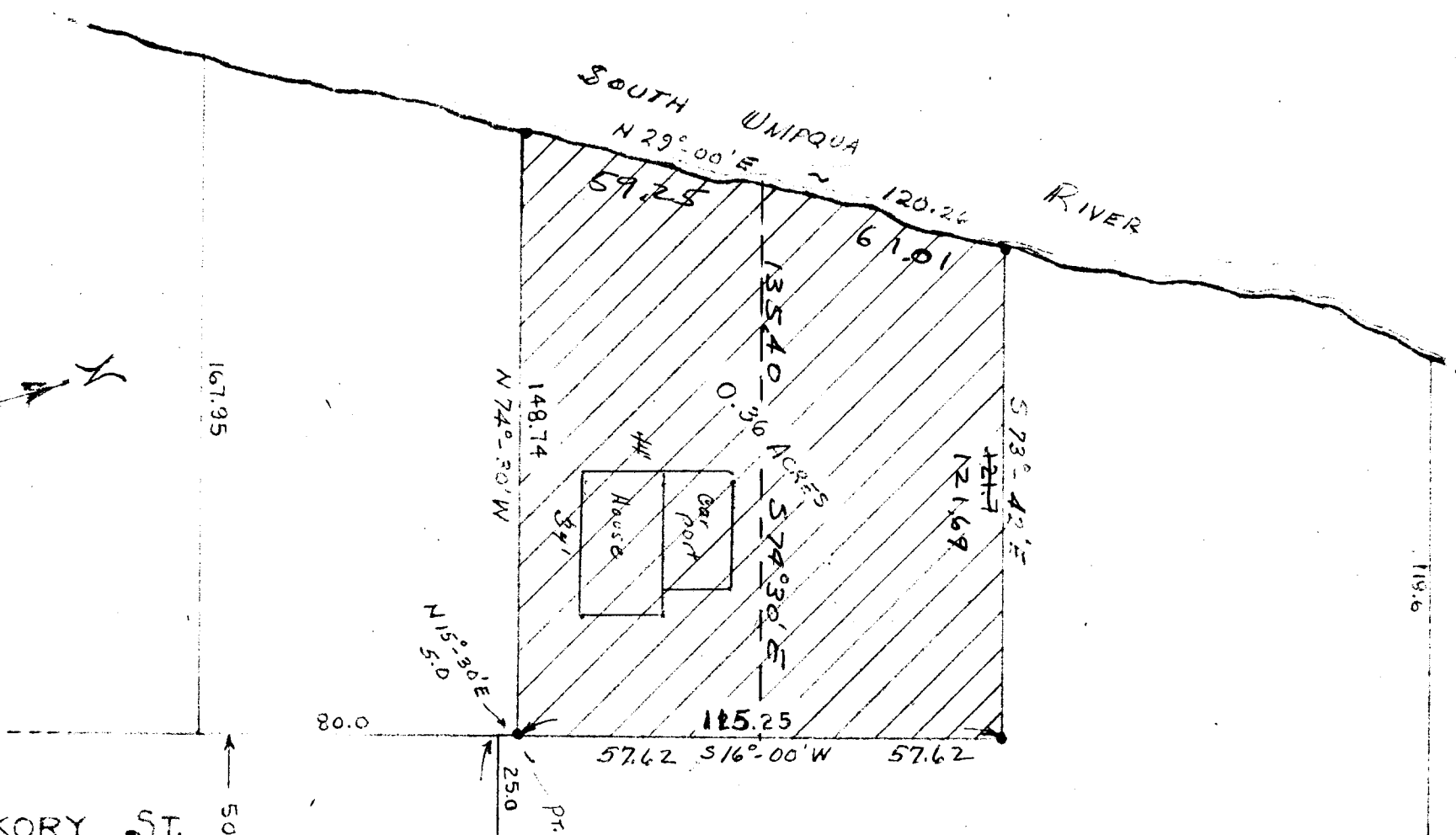


OCTOBER 1962



HICKORY ST.

MINOR LAND PARTITIONING

APPROVED BY ROSEBURG CITY PLANNING COMMISSION

Oct. 24, 1962

R. M. Mowley
PRESIDENT

Janabel Hiatt
SECRETARY

D. J. [Signature]
CITY ENGINEER

HENSLEE SUBDIV.

SHARP ST.

HAZEL ST.

LEGAL DESCRIPTION OF PROPERTY (WILSHIRE'S)

BEGINNING AT A PIPE WHICH IS N74°-30'W 175.3 FT. AND N13°-55'E 15.0 FT. AND N74°-30'W 207.3 FT. AND N15°-30'E 5.0 FT. FROM THE NE CORNER OF LOT 7 OF WILES FRUIT TRACTS T27S R6W W.M. DOUGLAS COUNTY, OREGON; THENCE RUNNING FROM SAID BEGINNING POINT N74°-30'W 148.75 FT., THENCE N29°-00'E 120.26 FT., THENCE S73°-42'E 121.7 FT., THENCE SOUTH 16°-00'W 115.25 FT. TO THE PLACE OF BEGINNING; CONTAINING 0.36 ACRES, MORE OR LESS.

(CLERK OF DOUGLAS COUNTY DEED RECORDS)
VOL. 317 PAGE 23
INSTRUMENT NO. 312297

GILBERT ACRES



PORTION OF LOT 6 WILES FRUIT TRACTS
SECS 127S R6W W.M. (ROSEBURG) DOUGLAS COUNTY, ORE.

W. E. WILSHIRE

ROSEBURG, OREGON

FIELD SURVEY & PLAT PREPARED FOR

SCALE: 1" = 40 FT.

MARTIN ENGINEERING SERVICE - MYRTLE CREEK

M 1 P Vol. 1, P. 5

S. File No. 52/134-2

CS FILE FOLDER

CONTAINS

MORE

INFORMATION