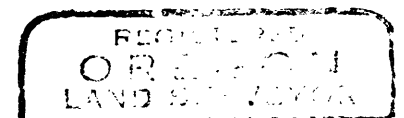


COUNTY SURVEYOR'S OFFICE  
DOUGLAS COUNTY, OREGON

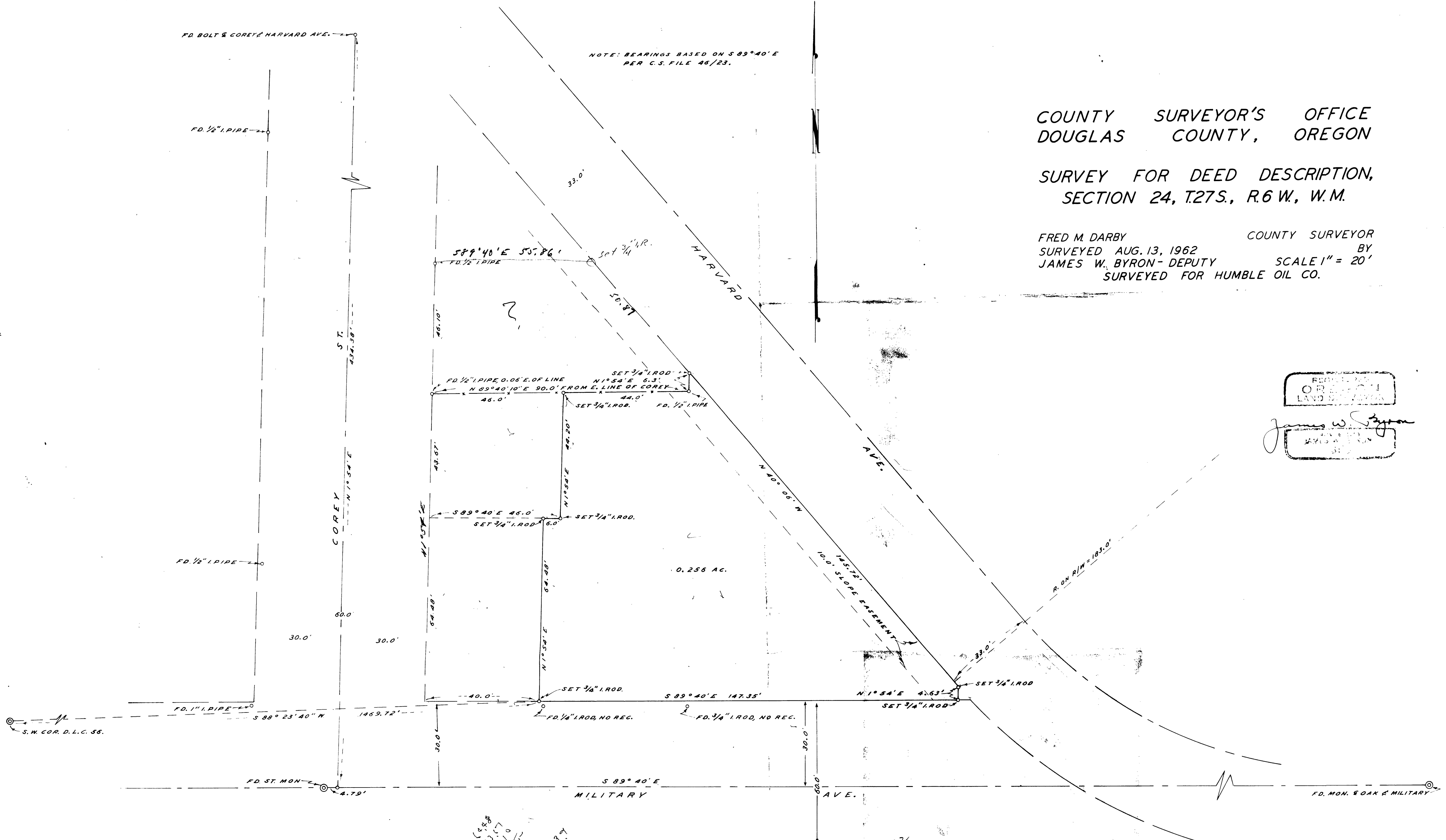
SURVEY FOR DEED DESCRIPTION,  
SECTION 24, T.27S., R.6 W., W.M.

FRED M. DARBY COUNTY SURVEYOR  
SURVEYED AUG. 13, 1962 BY  
JAMES W. BYRON-DEPUTY SCALE 1" = 20'  
SURVEYED FOR HUMBLE OIL CO.



*James W. Byron*  
JAMES W. BYRON  
SURVEYOR

NOTE: BEARINGS BASED ON S 89° 40' E  
PER C.S. FILE 46/23.



50.87  
145.72  
196.59

41.20  
44.98  
114.78

64.48  
43.67  
46.10  
154.25  
14  
43.67  
53  
44.20

589-40E  
178.25  
178.25  
178.25

588  
53.67  
49.10  
154.25

59-59-60  
59-40-10  
00-19-50  
00-39-50

102  
108

189-40E  
130-04  
220  
184  
40-04