

FILED
RECEIVED

DEC 20 1974

COUNTY SURVEYOR
LOUGLAS COUNTY, ORE.

Book 2

Walker's

WATERPROOF
FIELD BOOK

FILLER

Form 301

Retracement of Section Lines

34-5-7215 Riv. W. Booth, Ore

Property of Crown, Willamette Paper Co

Booth, Ore

"Return the Loan"

(DARLING'S PROCESS)

J. L. DARLING CO.

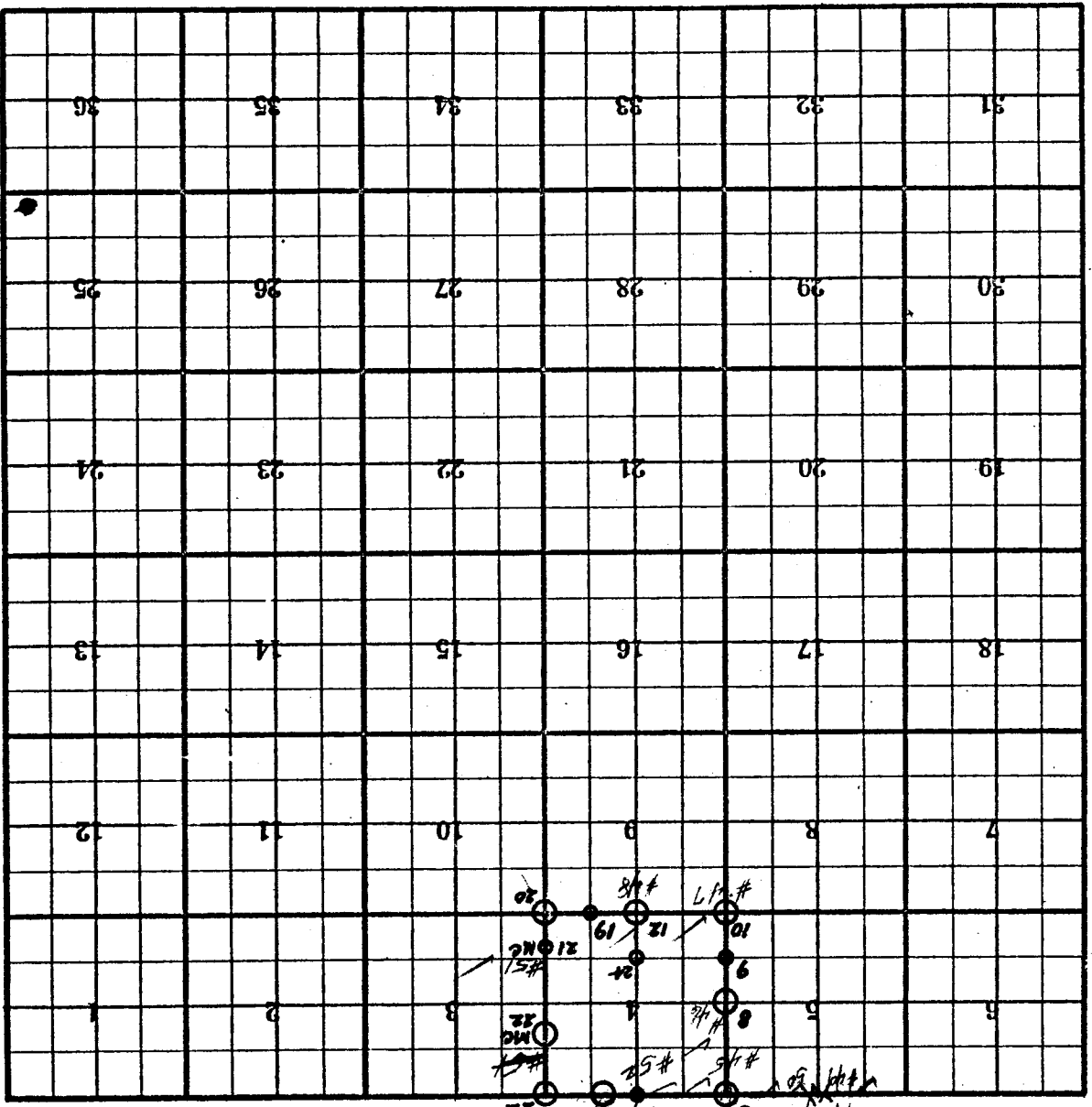
117 SOUTH 8TH.

TACOMA, WASH.

"Return the Loan"

If no other special forms can be used use 3 year round.

For ORIGINALS
SEE F.13, No 114



Township No. 21 South Range 12 West
 Douglas County, Oregon
 W.M.

See other index for 20 South.

INDEX OF: "Book 2"
 "Retracement of Section Lines
 S.4-5-T21S R12W. Booth, Ore."



Handwritten scribbles and illegible text at the top of the page.

FILED
RECEIVED

DEC 20 1974

COUNTY SURVEYOR
DOUGLAS COUNTY, ORE.

Bucklingham
Wilkespie

| Date | Line | Index | Pages |
|--------------|---|-----------------|-------|
| July 17 1943 | Compass line West from MC 53 To Cor 574 | 32133 7205 R12W | 2-5 |
| July 22 1943 | Compass line S 103° 0' E from Cor 574 To 1/4 S 1/4 T215 R12W | | 6-8 |
| July 28 1943 | Compass line S 101° 15' E from 1/4 S 1/4 T215 R12W To Cor 574 | | 9-10 |
| July 27 1943 | Compass line S 89° 30' E from Cor 574 To 1/4 Cor 574 T215 R12W | | 11 |
| July 28 1943 | Compass line North from Cor 574 To Cor 32133 | 7205 R12W | 13-16 |
| Aug 2 1943 | Compass line West from Cor 574 To MC 32133 | | |
| Aug 6 1943 | Compass line S 89° 30' E from Cor 574 To Cor 910 | | 17-18 |
| Aug 7 1943 | Compass line N 19° W from Cor 910 T215 R12W To MC 413 | | 19-20 |
| Aug 9 1943 | Compass line South from Cor 413 T205 R12W To MC 413 | | 21 |
| Aug 9 1943 | Compass line West from Cor 35134 T205 R12W To Cor 413 | | 22 |
| Aug 10 1943 | Compass line N 10° 16' W from 1/4 Cor 574 T215 R12W To BS 46 Cor 24 | | 23 |

W. P. BARKER, JR.
REGISTERED SURVEYOR

FILED
RECEIVED

DEC 20 1974

COUNTY SURVEYOR
WASCO COUNTY, ORE.

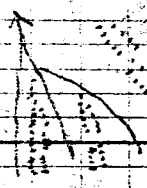
721-12
114 COR #46 ✓
5/14

| Station | Slope DIST | Abney | offset to curve line |
|--------------------|------------|-------|-------------------------|
| 267813 | 173 | -335 | E 343 |
| 267917 ok check | | | E 345 |

July 24, 1974

W. C. ... H. ...

372.41 =
 East 372 - 1113 = 245 to 1/4 corner 5/4
 Field notes called for distance of 2829.92
 Our chained distance bot 2698
 131
 Found both bearing trees to 1/4 corner
 and relocated. Corner with 1 1/2" Iron
 pipe and 2x2x5' Fir post Crayon marked so 59
 from which bears original 36" Douglas
 Fir (New) 42' S 83° E 13 3/4 FT. Total
 Scribed 1/45 (BT covered)
 Original 16" Douglas Fir (now broken
 off 59' 8' Ft tall) N 73° W 594
 To nail scribed 1/45 B.T.
 A Crayon marked 3' Douglas Fir
 N 73° W 105 R P BT 1/45 5
 Corner stands on South slope of small
 ridge Course E/W
 7494



W. C. ... H. ...
 114 COR #46 ✓
 5/14

FILED
RECEIVED

DEC 20 1974

COUNTY SURVEYOR
CLATSOP COUNTY, ORE.

F21-12
COR #17 ✓
SEC 5
P 19

| Station | E from Slope DIST | 1/4 Cor Abney | 5/8 off set To correct line | 2' E of 2' SR |
|-------------------|-------------------|---------------|-----------------------------|---------------|
| S 2014 12+95.0 | 25 | -1 | E312 | 2' E of 2' SR |
| 13+20.7 | 123 | -99 | E318 | |
| 14+32.5 | 200 | -99 | E345 | |
| 17+96 | 200 | -37 | E382 | |
| 16+12.1 | 168 | -125 | E434 | |
| 18+76 | 154 | +35 | E472 | |
| 17+99.7 | 200 | -284 | E511 | |
| 16+66 | 172 | -172 | E558 | |
| 17+66.3 | 60 | -72 | E592 | |
| 15+40 | 592 | 2 | East to Cor. 5/4 | |
| 21+20.3 | | | South | |
| 19+2.3 | | | | |
| 23+12.6 | | | | |
| 16+96 | | | | |
| 24+82.2 | | | | |
| 592 | | | | |

Field notes call for ridge
13710 Ridge E & W.
13728 Foot Trail E & W.

Found Original 24" Spruce BT and from it
relocated The corner ^{5/4} 89 as all alders.
were missing Set 1 1/2" Iron pipe and 2x2x4'
Cascara Post Graym Marked 55 54 July 27 1943
58 59

From which bears
Original 24" Spruce (Now 5 FT 5 1/2 E 143 FT
Scribed BT Rest covered with 30 inches Brock
growth.
If Graym Marked 7 FT 5 Spruce S 15 W 90° E RABTS 8
17 Graym Marked 6 FT 5 Spruce N 82 W 63° E RABTS 5
179 231 = 117 4
24+300 Crack 6 FT 5 1/2 4 517
7' 5/8 BT 0 8 BT original
2485 7
24859
24823
24807

FILED
RECEIVED

DEC 20 1974

COUNTY SURVEYOR
WHEELERS COUNTY, ORE.

T21-12
#48 ✓
1/4 4/9

| Station | 030 E Slope | From | Cor. 5/4 B/P | T215A72E | Notes |
|---------|----------------|-------|-----------------|----------|----------------------|
| 161552 | | Abney | S 192 | | |
| 1425 | 151 | -352 | S 202 | | an old log |
| 17777 | 55 | -458 | S 215 | | an rotten log |
| 187277 | 189 | -508 | S 235 | | Esalecreek |
| 1689 | 62 | 727 | S 292 | | Rotten Stump |
| 171961 | 110 | 7135 | S 255 | | |
| 598 | 165 | 713 | S 274 | | |
| 207559 | 199 | 7125 | S 294 | | Hump course SW |
| 17090 | 28 | -115 | S 295 | | |
| 24642 | 28 | -475 | S 310 | | 261170 creek |
| 1636 | 139 | 7625 | S 313 | | |
| 23288 | 45 | 742 | S 317 | | |
| 1470 | 69 | -17 | S 322 | | |
| 24763 | 80 | | | | Continued page 19 |
| 278 | | | | | |
| 257041 | | | | | |
| 1255 | | | | | |
| 264296 | | | | | |
| 381 | | | | | |
| 264677 | | | | | |
| 590 | | | | | |
| 277267 | | | | | |
| 789 | | | | | |
| 28056 | | | | | |

Mag far 21°30'E

Aug 5 1943
W.G. Corbin
H.H. Crickren

12

Creek Course S E 19 + 68. 195 425

Field Notes Call for Stream at 19 + 80

Found original BT bearing SW which is dead
Spruce snag from it reset corner with 1/2"
Iron pipe and 2x2 x 5 Spruce post Crayon Marked
1/45 59 W.G. Corbin From which beam originates
12" Fir (Nov. 25" Spruce snag 30ft high S 27 W 17 82
Ft to scribed face 1/45 at 17 6 to Nail.
51 + 312

4 FT Spruce S 38 15' E 458 Crayon Mark RP B T S 9
5 FT Fir N 89 30 W 242 Crayon Marked RP B T S 9

Corner stands 17 FT East of Creek Course S by E

From 26 + 30 E S 0 30 W 39 - 4590 = 310
to 1/4 Cor. which is 1/2" PIPE.

160 - 200 16

FILED
RECEIVED

DEC 20 1974

COUNTY SURVEYOR
WHEELER COUNTY, ORE.

#93
11/4/33
11/4/33

| Station | Slope DIST | North from Corner Abney | 32/33 5/9 | 7205 R 12 W Mag. Loc. 21930'E | July 29 1943 | 14 |
|---------|------------|----------------------------|--------------|---|--------------|-------|
| 15+98.0 | | E424 | | 14 Top Corner Course SW | | |
| 17+78.2 | 200 | +59 | | | | |
| 699 | 75 | +39 | | | | |
| 18+98.1 | | E488 | | | | |
| 199.2 | 132 | +19 | | | | |
| 19+89.3 | | E527 | | | | |
| 43.2 | 49 | -55 | | 20 Top Ridge NW+SE at 19+80 Top of Ridge is 20 FT East of our line | | |
| 20+33 | | E590 | | | | |
| 86.5 | 92 | -36 | | | | |
| 21+72.7 | | E563 | | | | |
| 161.0 | 186 | -58 | | Set 1 1/2" Iron pipe and 2 1/2" x 5" Spruce post a top of 26.58 FT N from Cor. 5/9 about 1500' South from line which bears 200' from North 598 to NW 85 R.R. 26+58 FT | | |
| 22+88.7 | | E603 | | | | |
| 191.8 | 196 | -21 | | 5" Spruce N 11 E 75 1/2 R.P. 26+58 FT Other post for approx 100' N 20 1/2 E 80.5 | | Typed |
| 247.25 | 81 | +45 | | | | |
| 81.0 | | E678 | | | | |
| 25+53.5 | | E725 | | | | |
| 181.5 | 186 | -22.5 | | Expert 6-9-1943 107 31 = 107 1/2 East from 27+87 to Pipe and Post Marker Mag. 32/33 12 1/2' E of No. 601 | | |
| 27+33.0 | | -0.5 | | Original Corner of B to not found during blaze on 8" Spruce made 1922 | | |
| 61.0 | 61 | -0.5 | | | | |
| 27+98.0 | | -33.5 | | | | |
| 45.5 | 48 | -33.5 | | | | |
| 28+98.5 | | -43.0 | | | | |
| 191.5 | 159 | -43.0 | | | | |
| 298.0 | | | | | | |

NOTE: THIS IS A COPY OF THE ORIGINAL SURVEY RECORD. THE ORIGINAL IS KEPT IN THE SURVEYOR'S OFFICE.

FILED
RECEIVED

DEC 20 1974

COUNTY SURVEYOR
CLATSOP COUNTY, ORE.

19

| Station | 30' E Slope Dist | From Abney | Cor. 5/4 5/9 | Continued from Page 12 | Notes |
|---------|------------------|------------|-----------------|------------------------|--|
| S 890 | | | | | |
| 38456 | | | | | |
| 1 530 | 158 | -235 | S 322 | | 65-1852 = 639 Crack at 30233 |
| 29594 | 135 | +128 | S 333 | | To Cross at Distance Called for go South about 50 ft 1974 Field Notes Call for Stream Course S W at 1977 |
| 30732 | 84 | +342 | S 342 | | |
| 795 | 200 | +16 | S 342 | | |
| 31727 | 73 | +18 | S 361 | | Yellow tag on 6 Ft Spruce 800 Ft E of N 1/4 1/2 from 39+70 1/2 Highway on Corrected line by 1/2 |
| 1979 | 152 | +185 | S 366 | | 39+70 1/2 Highway 28" Ironing Hemlock |
| 33701 | 68 | -295 | S 376 | | Field notes Call for Ridge N+S at 37+95 |
| 718 | 111 | -615 | S 381 | | Magyar 2130E Aug 23 1943 |
| 37451 | 200 | -55 | S 388 | | To Establish Ely 1/2 Go S 89 30' E 18' From 37+263 To N 39+44 1/2 S 89 30' W 40' FT to E 1/2 Cor. 1/2 |
| 37456 | 76 | -21 | S 400 | | S at 1 1/2' Iron pipe + 3 X 3 X 4 FT FIR Post Crayon Marked 13145 S 89 06' E 59 13145 W 89 06' W From Cor 9/10 From Cor 9/10 |
| 946 | 75 | -26 | S 405 | | 59 McGowan Aug 23 1943 From which bears a Spruce W 55 1/2 E 710 FT to Nail |
| 37451 | 192 | -295 | S 410 | | Crayon Marked R.P.B.T. 137 1/2 24 Hemlock S 15 1/2 W 58 1/2 FT to Nail Crayon Marked |
| 1752 | | | S 423 | | R.P.B.T. 137 1/2 Pipe stands in Gulch near fir CNS 204 Creek Course SE 10' in a Fall Tree |
| 37426 | | | | | |
| 799 | | | | | |
| 10400 | | | | | |
| 726 | | | | | |
| 10473 | | | | | |
| 10664 | | | | | |
| 12797 | | | | | |

S 89006 E 26291



1/16
col 1/9

FILED
RECEIVED

DEC 20 1974

COUNTY SURVEYOR
DOUGLAS COUNTY, ORE.

MC
#13
T21-12
#51V

21

Aug 7 1973
McCarroll H. H. Jackson

May 21 1930 E

2 + 2 7 Road SW
3 + 10 4 1/2 km back N. Ft East old line Bk 2 E 1457

6 + 2 3 Road North

Field Notes Call for MC at B + 085 N 10° W of Cor 9/10

Found 25" Alder with old scars but rotten a + heart
So no scribe marks could be found
Set 1 1/2" Iron pipe dined 2 X 2 5/8 post.
From which bears RR spike in 25" Alder S36W
35' 9" FA
24" SPICE S 2° 30' E 508 + 18% = 509 To Next
Marked A P 8 + 108 North Crayon.
Pole on Trestle N 3 W
outside pole on Trestle N 3 E

CHAMPL
TYPED

STATE OF OREGON
DOUGLAS COUNTY
1973-12-20

| Station | from Cor. 9/10 | 7215R 12W |
|---------|----------------|-----------|
| 0 + 00 | ADNEY | |
| 0 + 889 | 89 | -50 |
| 0 + 889 | 200 | -148 |
| 1978 | 142 | -11 |
| 2 + 867 | 129 | -228 |
| 1411 | 183 | -145 |
| 7 + 278 | 72 | -125 |
| 1257 | 46 | 00 |
| 57535 | 9 FT | |
| 1812 | | |
| 74347 | | |
| 715 | | |
| 8062 | | |
| 96 | | |
| 8 + 108 | | |

N 0° 22' W

N 89° E to MC pipe as
set from Alder tree.

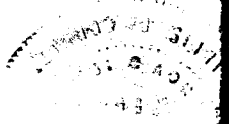
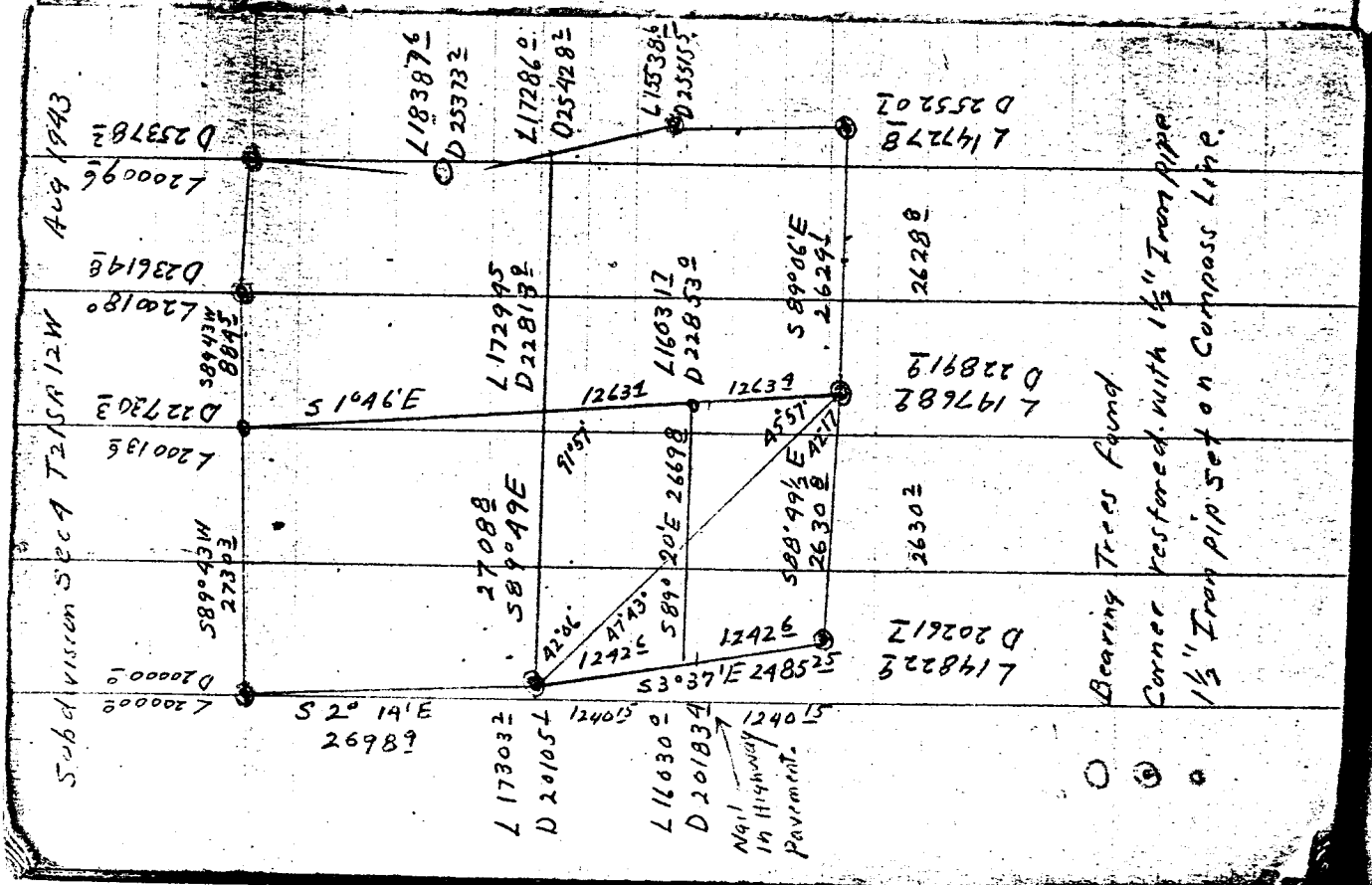
Checked.

FILED

RECEIVED

DEC 20 1974

COUNTY SURVEYOR
CLATSOP COUNTY, ORE.



C. S. File No. 52/91

CS FILE FOLDER

CONTAINS

MORE

INFORMATION