

REM.

T 265 R 2 W

COR. SECS. $\frac{13}{24}$

(ON W. LINE SEC. 18, T265 R1 W)

FD. PILE OF ROCKS AT COR. -
CHISEL MK. "—" ON ONE OF THEM.

FD. FIR TREE (NOW 20" DIAM.)

N 67° W - (INSTEAD OF N 60° W) 9 1/2 FT. -
CUT OPEN & FD. GOOD SCRIBING. - "26 R 2."

FD. FIR TREE (NOW 20" DIAM.)

S 27° W (INSTEAD OF S 14° W) 7 1/2 FT.

OPENED & FD. OLD FACE BADLY ROTTED.
NO SCRIBING VISIBLE - NOTE - THIS
TREE WAS OPENED APPROX. 50 YRS.
AGO & LOOKED AS IF SCRIBING WAS
CHOPPED OFF AT THAT TIME.

NO TRACE FD. OF ORIG. N.E. &
S.E. TREES.

AT COR. SET IRON PIPE WITH BRASS
CAP MKD. "COUNTY SURVEYOR'S
OFFICE 1963 T 265 R 513 R"
FILE ROCKS AROUND COR. W S 24 W
BLAZE & RESCRIBE:

20" DOUG. FIR N 67° W 9 1/2 FT.
MKD. "T 265 R 2 W S 13 CS BT"

BLAZE & SCRIBE NEW TREE:

9" DOUG. FIR S 63° W 11 1/4 FT.
MKD. "T 265 R 2 W S 24 CS BT"

COR. LIES APPROX. 130 FT. NORTH
OF NIAGARA HWAY.

MAR. 29, 1963

Mils E.

M.S.
Y.T.
M.S.

C.S. No. 53/77

Section 24 Twp 26 S Rge 2 W N Date: 2-25-63

4301
4192
4292

How was corner identified? 2 Apparent B.T.'s

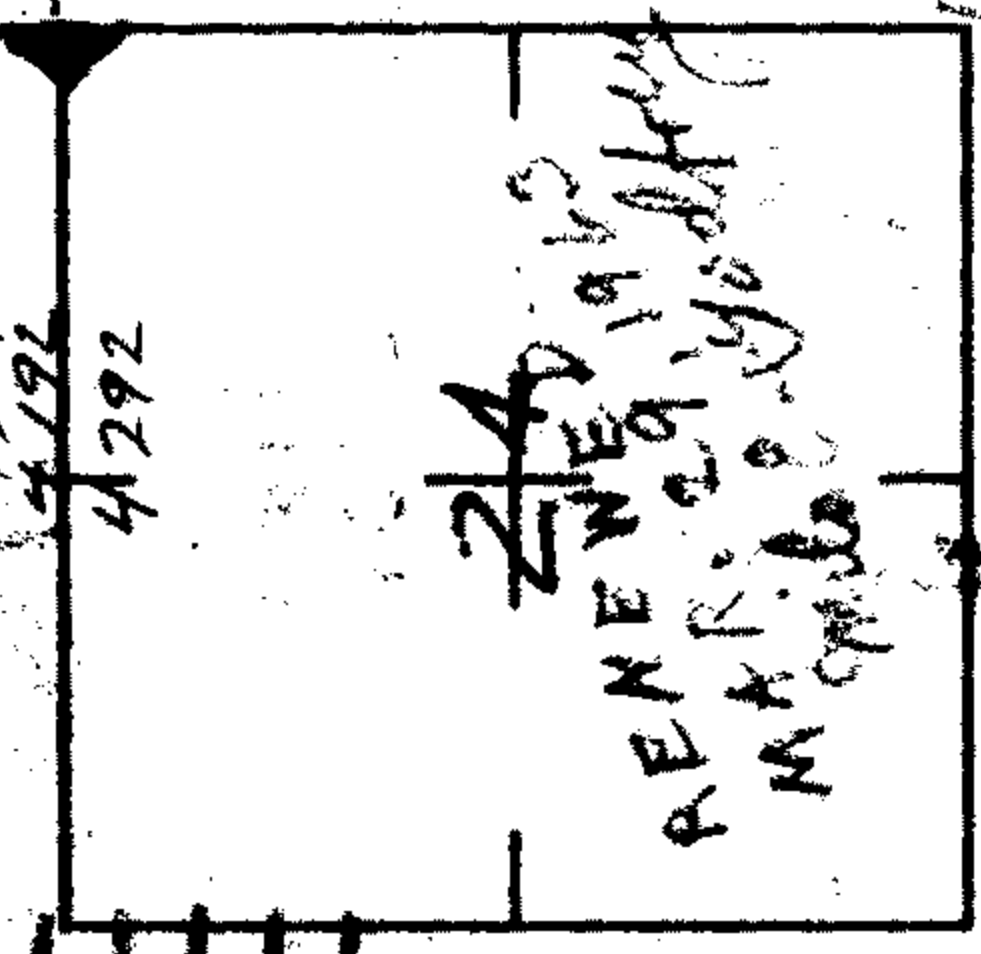
U.S. F.S. Tags

Condition of corner: Mound of Stone

One Chisel Mark

Best route to reach corner: F.S. Bdry Marker

on N.U. Hwy. cor is approx 2 CN.N.



1883 Tree
~~cut by~~

Quadrant	NE	NW	SE	SW
Species & Size	18" D.F.	16" D.F.	No Trace	18" D.F.
Dist. & Bearing	N56 1/2 E 9.2'	N65W 9.2'		S31 1/2 W 7.9'
Condition of Scribe	—	old Face		Fair
Original or Resurvey	1883	orig.		orig.
Appearance of B.T.	Wind	Good		CNDR PCD
Tags, Marks, etc.	—	AXE MARKS		OUT FACE F.S. TAG

Other Remarks:

Did not chop out faces. Probable scribes visible on saw tree.

J. M. Beckwith
BLM ^{Stamp} Roseburg

CS 52/177-12 B.T. Tag