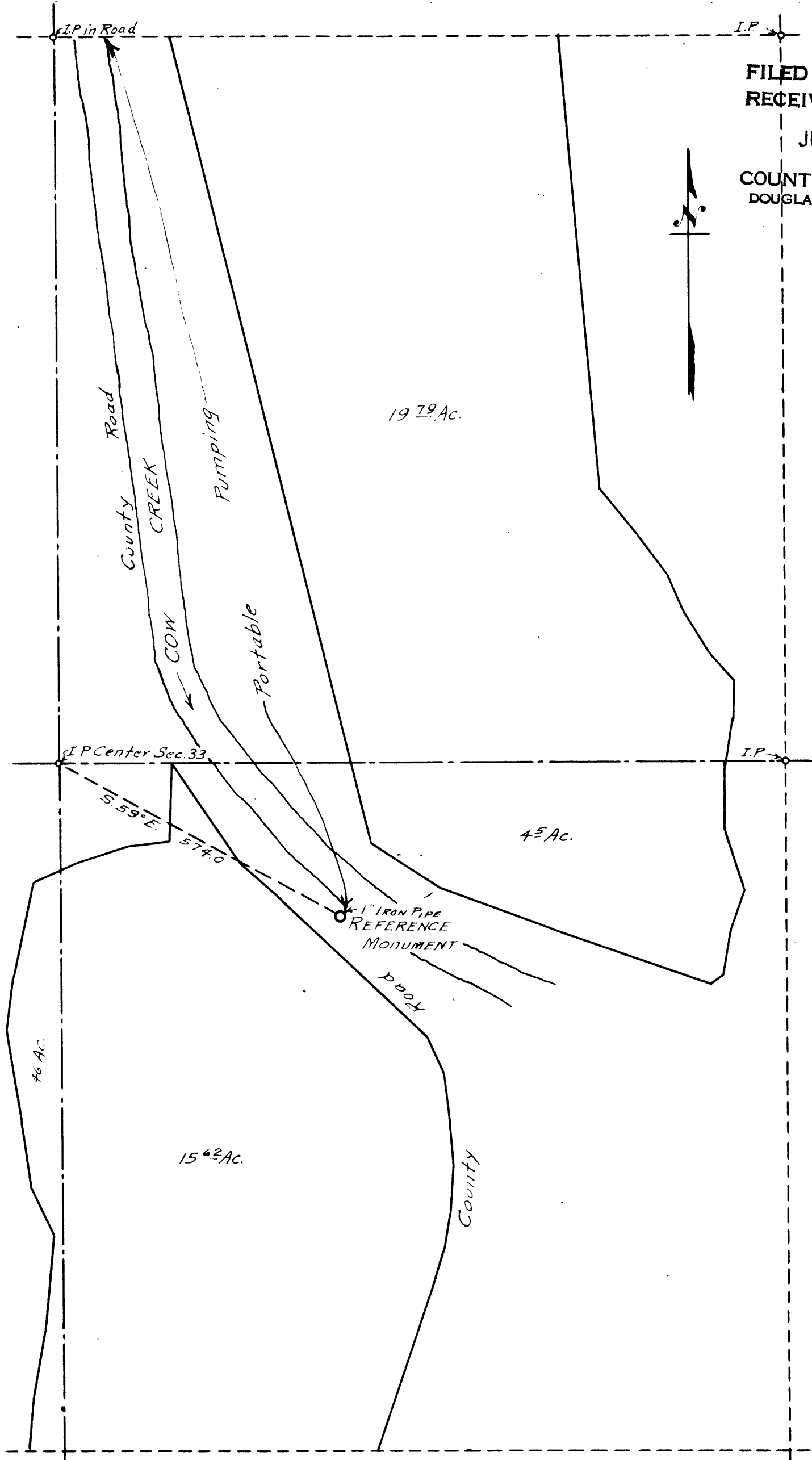


I, Geo. J. Wenderoth, of Azalea, Oregon, do hereby certify that this map was made from notes taken during an actual survey made by me on July 18, 1961; that the monument shown on this map consisting of an 1 inch iron pipe is located S. 59° E. 574.0 feet from the Center of Section 33, T. 31 S., R. 4 W. W.M.

Geo. J. Wenderoth



FILED
RECEIVED

JUL 19 1961

COUNTY SURVEYOR
DOUGLAS COUNTY, ORE.

**COUNTY SURVEYOR'S OFFICE
DOUGLAS COUNTY, OREGON.**

SURVEY FOR
WATER APPLICATION OF ROSS LENT IN
SECTION 33 T. 31 S., R. 4 W. W.M.
GEO. J. WENDEROTH, DEPUTY. July 18, 1961
SCALE 1" = 200 FT.

Geo. J. Wenderoth

PRINT ONLY 52/76-1