

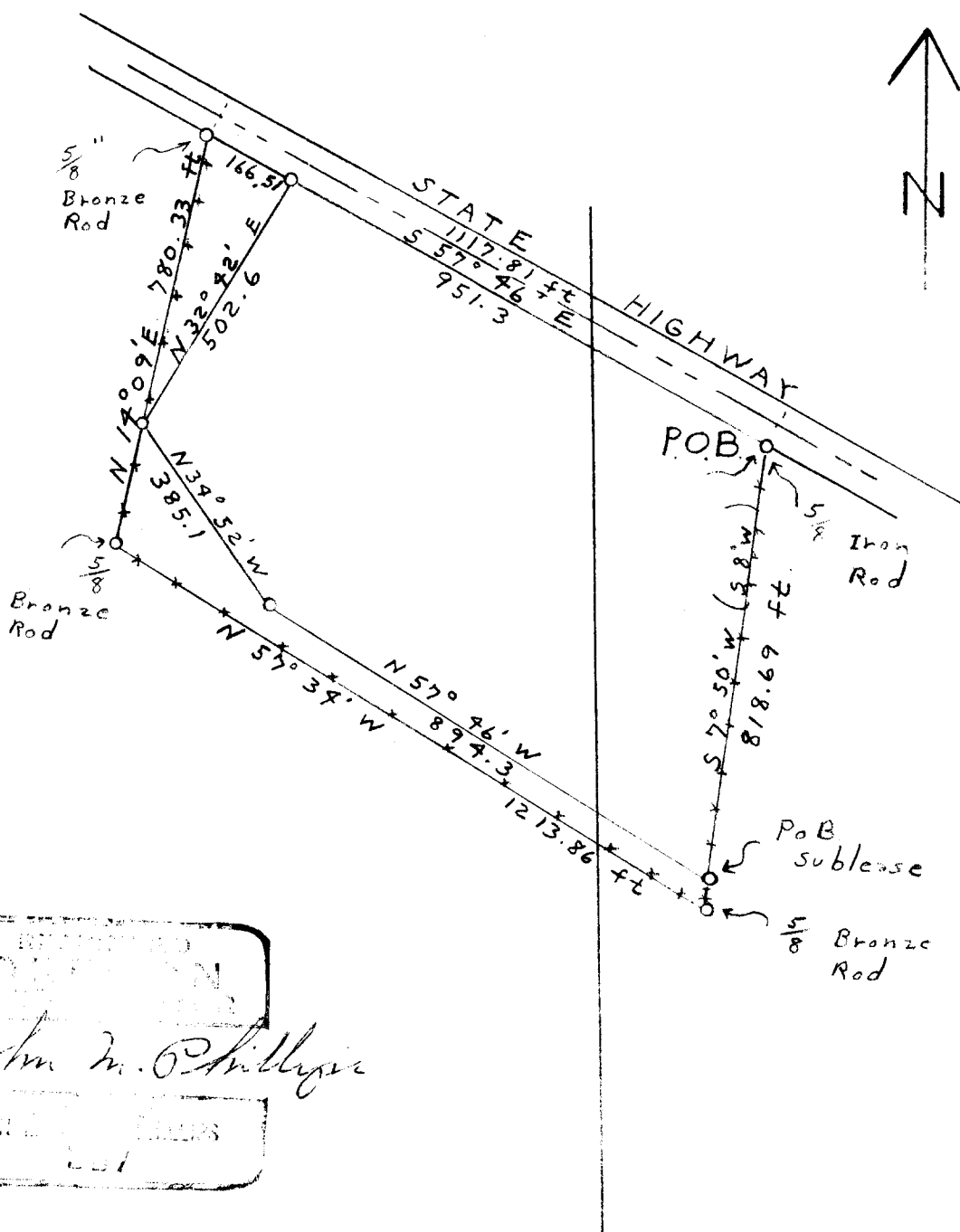
COUNTY SURVEYORS FILE DATA
NOT TO BE REMOVED FROM OFFICE

SNELLSTROM LUMBER CO. VENEER PLANT LEASE

NOV. 1956

SEC. 19 TWP. 22 S. R7W

SEC. 24 TWP. 22 S. R8W.



FILED
RECEIVED

NOV 19 1956

COUNTY SURVEYOR
DOUGLAS COUNTY, ORE.

LEASE ONLY

C. S. File No. 52/56

CS FILE FOLDER

CONTAINS

MORE

INFORMATION