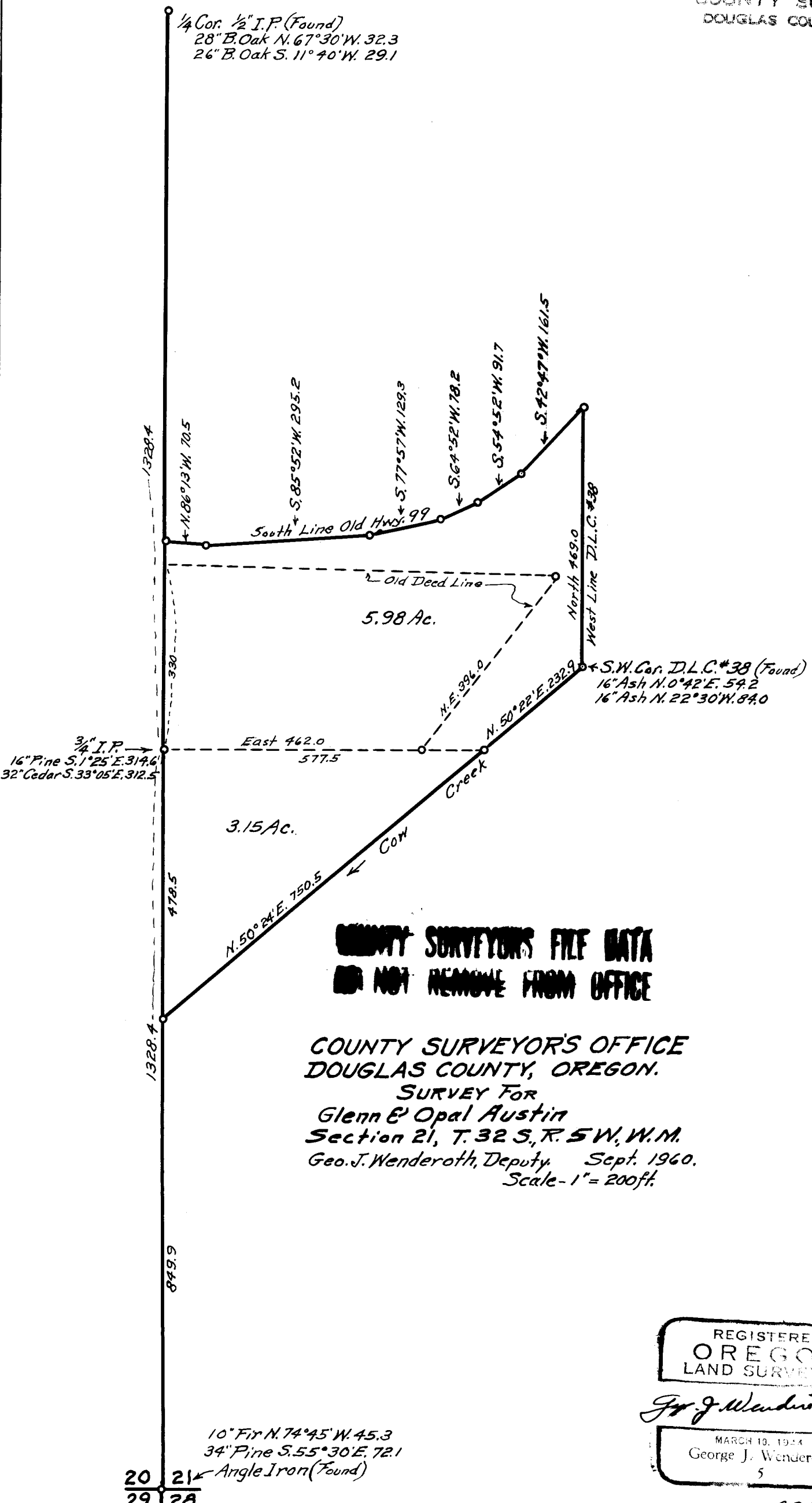


RECEIVED *J.J.*

SEP 14 1960

COUNTY SURVEYOR
DOUGLAS COUNTY, ORE.



**COUNTY SURVEYORS FILE DATA
DO NOT REMOVE FROM OFFICE**

COUNTY SURVEYOR'S OFFICE
DOUGLAS COUNTY, OREGON.
SURVEY FOR
Glenn & Opal Austin
Section 21, T. 32 S., R. 5 W., W. M.
Geo. J. Wenderoth, Deputy Sept. 1960.
Scale - 1" = 200ft.

REGISTERED
OREGON
LAND SURVEYOR

Geo. J. Wenderoth

MARCH 10, 1964
George J. Wenderoth
5

C.S. FILE 52/46