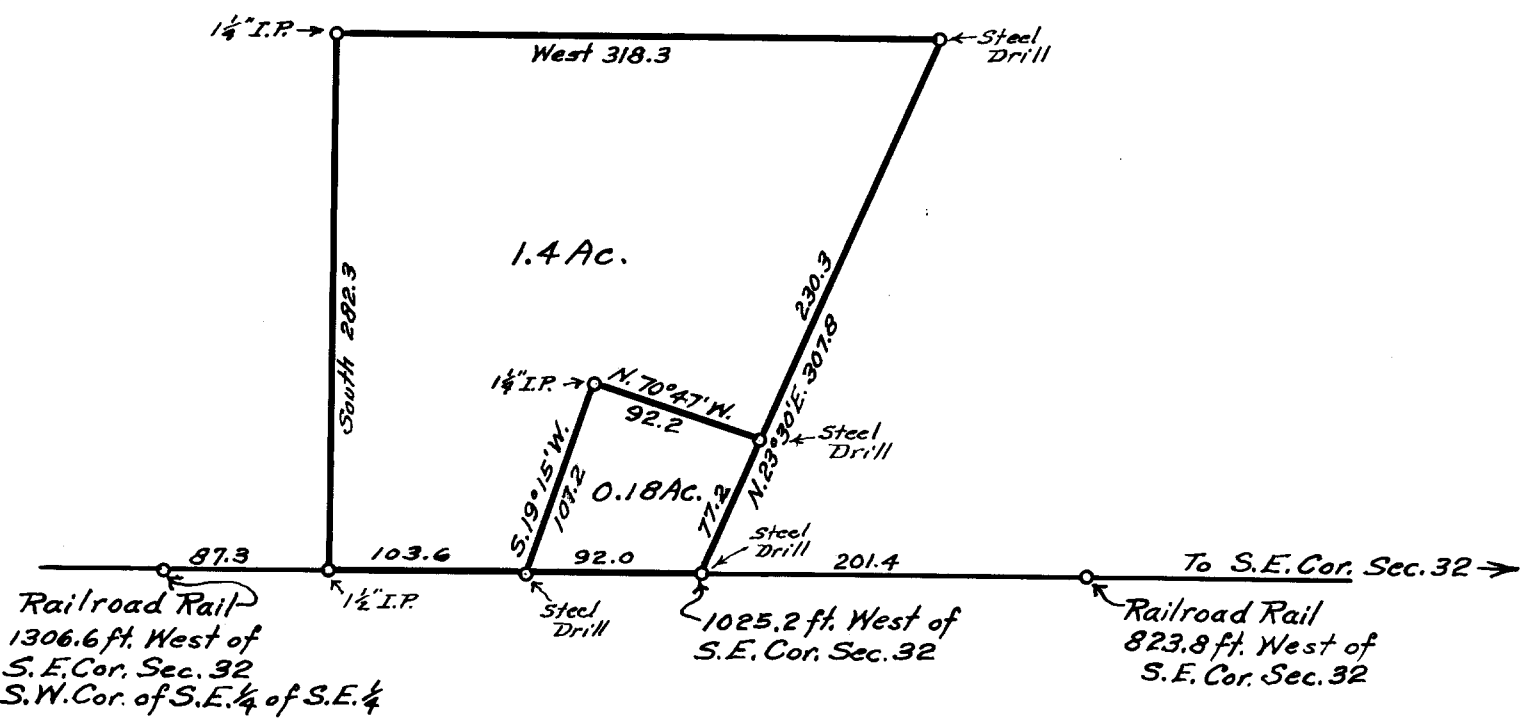


52/15

FILED
RECEIVED

FEB 8 1960

COUNTY SURVEYOR
DOUGLAS COUNTY, ORE.



COUNTY SURVEYOR'S OFFICE
DOUGLAS COUNTY, OREGON.

SURVEY FOR
ALTON DILLEN
SECTION 32, T. 32S., R. 6W., W.M.
Geo. J. Wenderoth, Deputy. Feb. 2, 1960.
Scale 1" = 100 ft.

MARCH 10, 1944
George J. Wenderoth

Geo. J. Wenderoth

REGISTERED
OREGON
LAND SURVEYOR

COUNTY SURVEYORS FILE DATA
DO NOT REMOVE FROM OFFICE