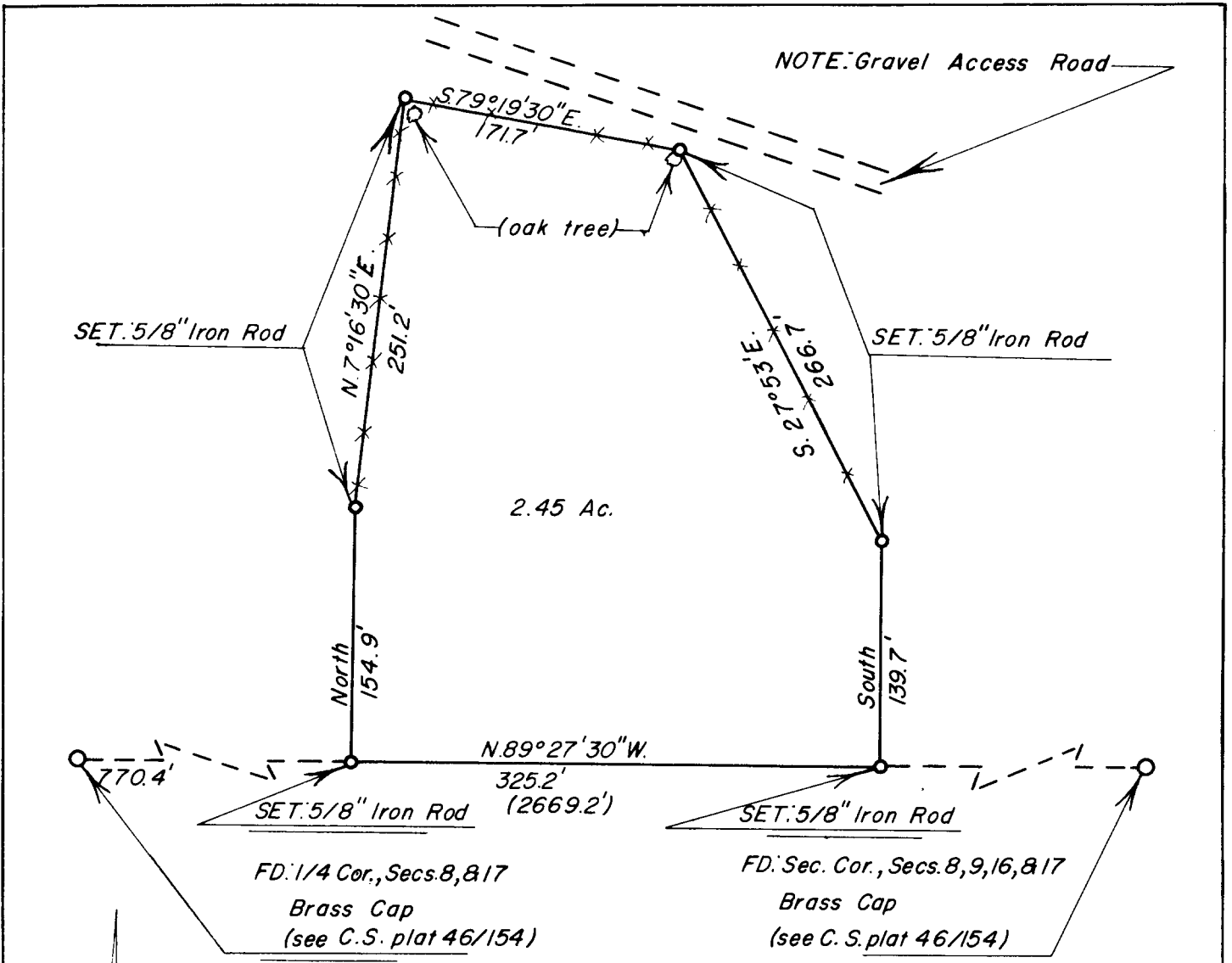


FILED *LL*
RECEIVED

MAY 10 1966

COUNTY SURVEYOR
DOUGLAS COUNTY, ORE.

COUNTY SURVEYORS FILE DATA
DO NOT REMOVE FROM OFFICE



WILLIAM STRADER SURVEY

1/4

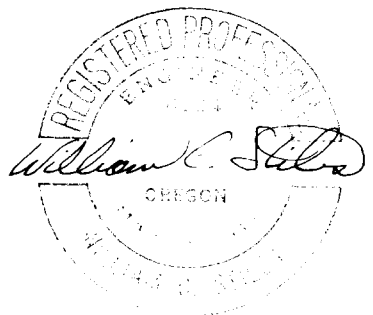
SECTION 8, T.26 S., R.3 W., W.M.

SURVEYED FOR: William Strader

SURVEYED BY: SEEK, Inc.

SCALE: 1" = 100'

DATE: 5-10-66



(NOTE: Bearing Based on C.S. plat 46/154)