

SURVEYED FOR PROPERTY COR. RESTORATION
 LOT #13, BLK. 1 MULHOLLAND MEADOWS, SEC. 12, & 13
 T. 27 S., R. 6 W. W.M.
 SURVEY BY BAUGHMAN SURVEY SERVICE
 SCALE 1" = 30' MAY 18, 1965

FOR: SMALLE REALTY
 Rose Sylvia

REGISTERED
 OREGON
 LAND SURVEYOR

Glenn S. Baughman

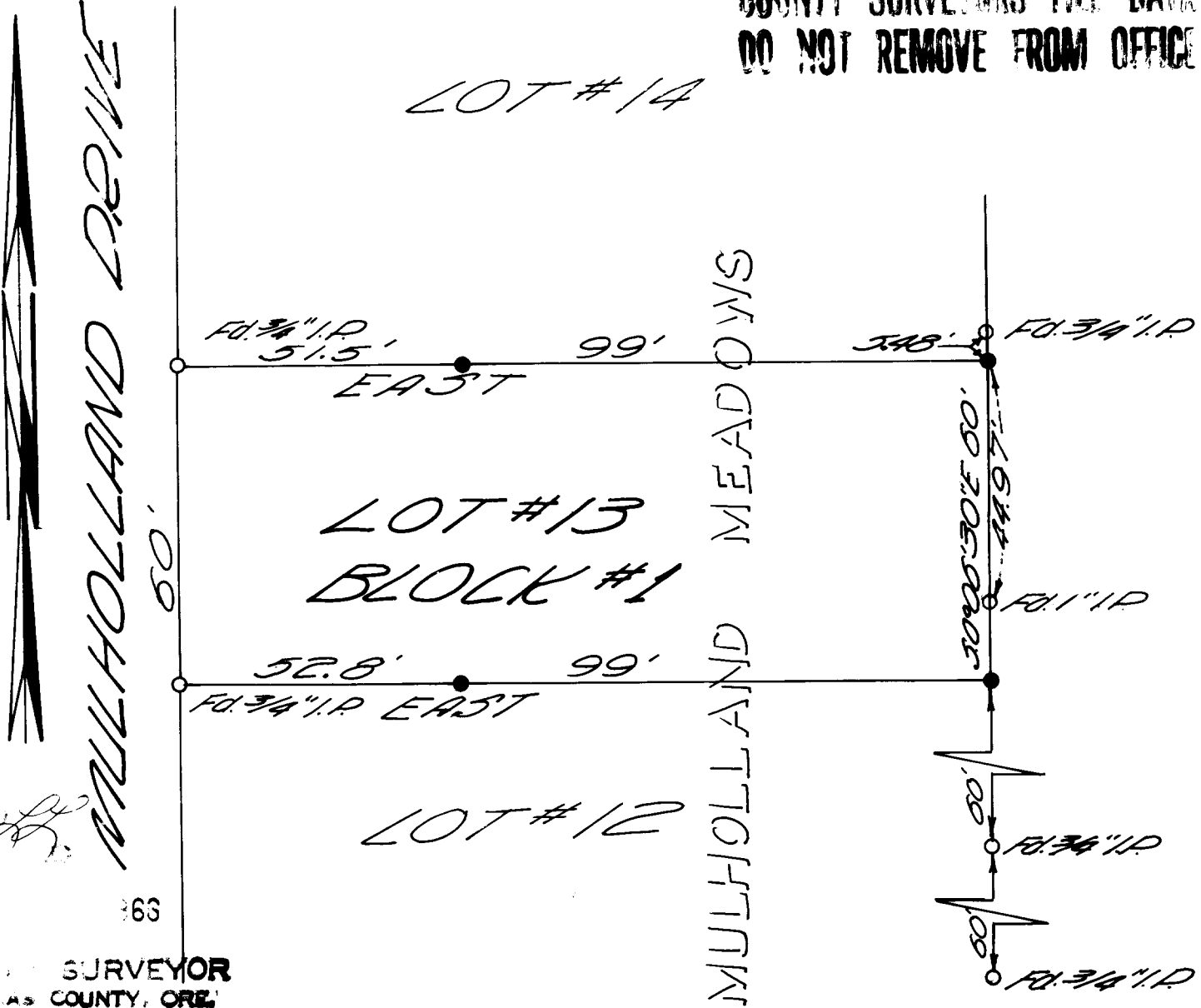
JULY 14, 1961
 GLENN S. BAUGHMAN
 536

o AS NOTED

• SET 5/8 "I.P.

BASE OF BEARING MULHOLLAND MEADOWS
 30° 06' 30" E.

COUNTY SURVEYORS FILE DATA
 DO NOT REMOVE FROM OFFICE



FILED
 REC

366

COUNTY SURVEYOR
 DOUGLAS COUNTY, ORE.