

REGISTERED
OREGON
LAND SURVEYOR

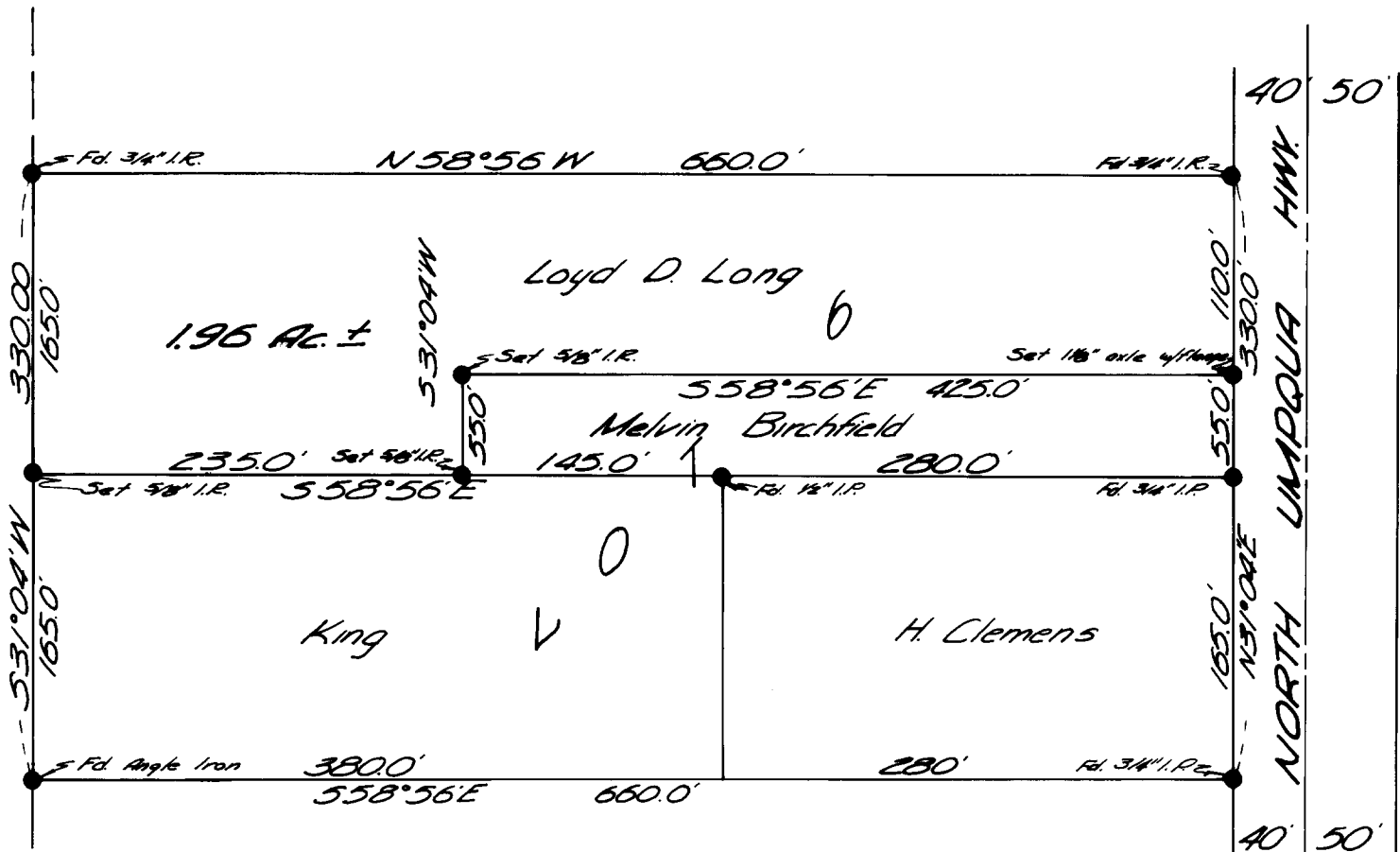
Milo E. Godfrey

MAY 13, 1960
MILO E. GODFREY
496

A SURVEY OF A PORTION OF LOT 6
PHILIPPI ACRES
IN SEC 21 T26S R4W W.M.
SURVEYED FOR LOYD LONG
BY MILO E. GODFREY 4-2-66
SCALE 1"=100'

Bearings are based on West Line of North Umpqua
Hwy. N31°04'E

COUNTY SURVEYOR'S DATA
DO NOT REMOVE FROM OFFICE



FILED
RECEIVED

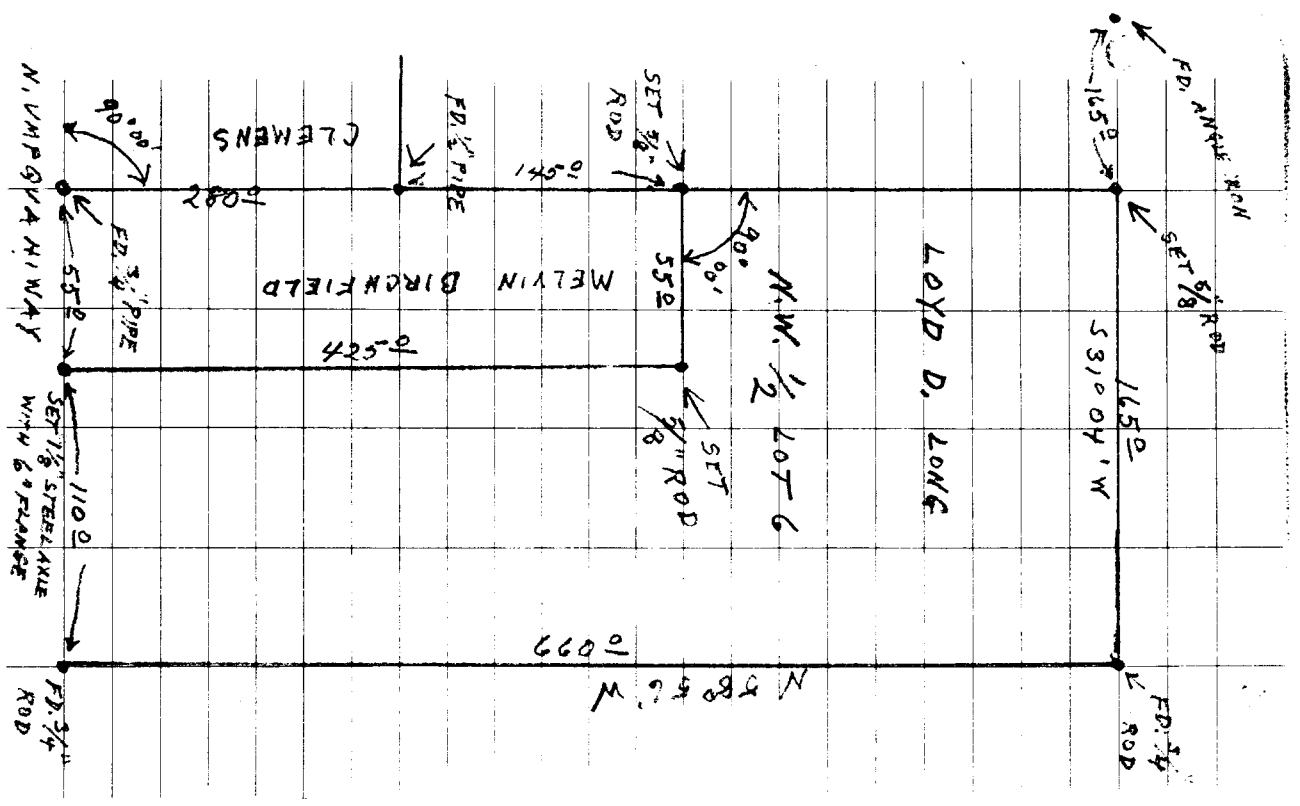
APR 4 1960

COUNTY SURVEYOR
DOUGLAS COUNTY, ORE.

PURPOSE OF SURVEY - TO MONUMENT, ON THE GROUND, THE DESCRIPTION OF THE PROPERTY OWNED BY LOYD LONG, WHICH IS THE NORTHERLY ONE-HALF OF LOT 6, PHILIPPI ACRES, LESS THE PORTION SOLD BY LONG TO MELVIN BIRCHFIELD. ORIGINAL CORNER BY LONG TO MELVIN BIRCHFIELD. ORIGINAL CORNER MONUMENTS OF LOT 6 WERE ALL FOUND, AS WELL AS CORNERS OF CLEMENS PROPERTY, WHICH WERE SET BY ME ON A RECENT SURVEY.

REGISTERED
OREGON
 LAND SURVEYOR
Milo E. Godfrey
 MAY 13, 1960
 MILO E. GODFREY
 496

C. S. File No. 51/342



CS 51/342b