

REGISTERED
OREGON
 LAND SURVEYOR

Milo E. Godfrey

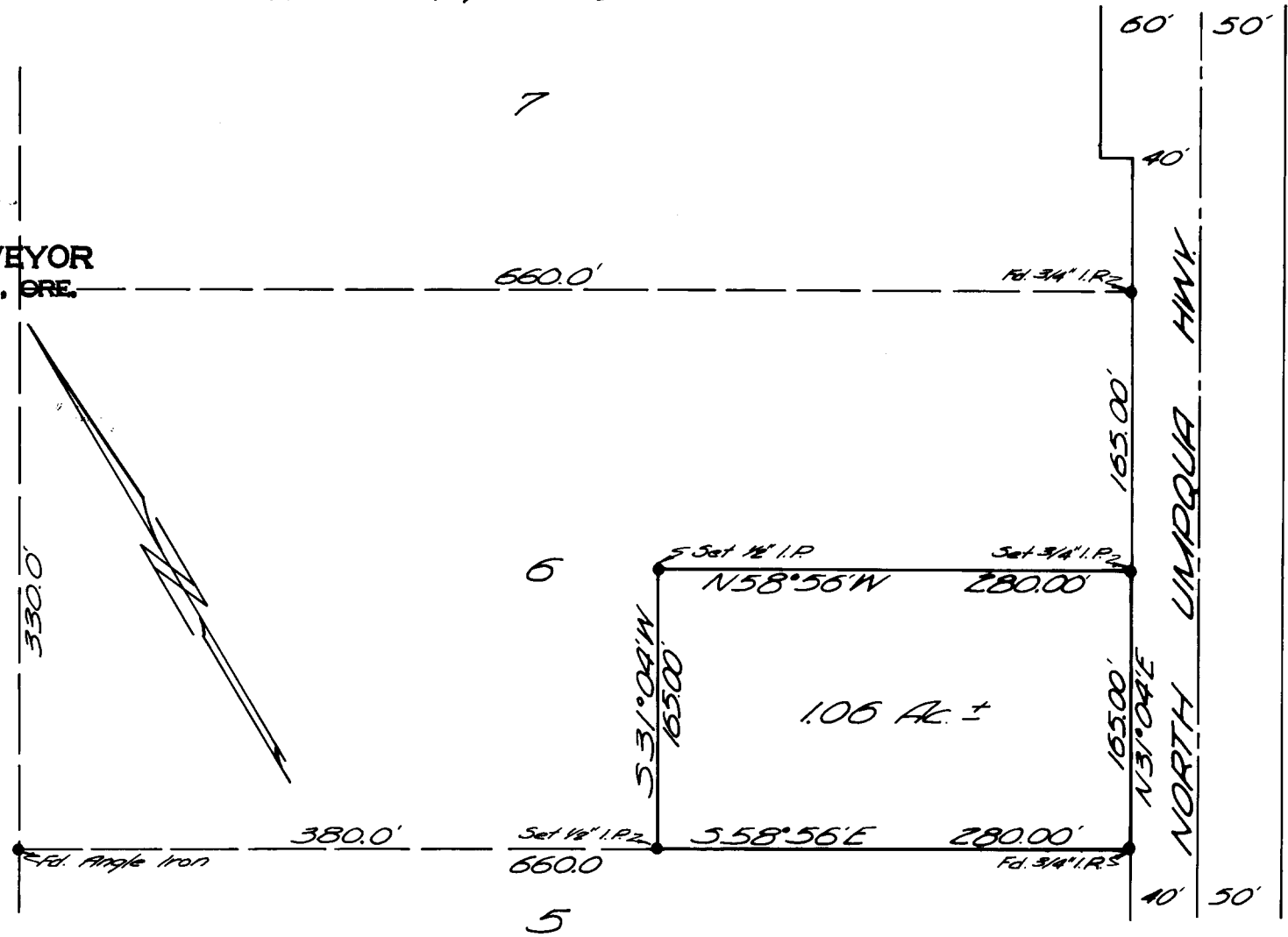
MAY 13, 1960
 MILO E. GODFREY
 496

A SURVEY OF A PORTION OF LOT 6
 PHILIPPI ACRES
 IN SEC 21 T26S R4W W.M.
 SURVEYED FOR HOWARD CLEMENS
 BY MILO E. GODFREY 3-24-66
 SCALE 1"=100'

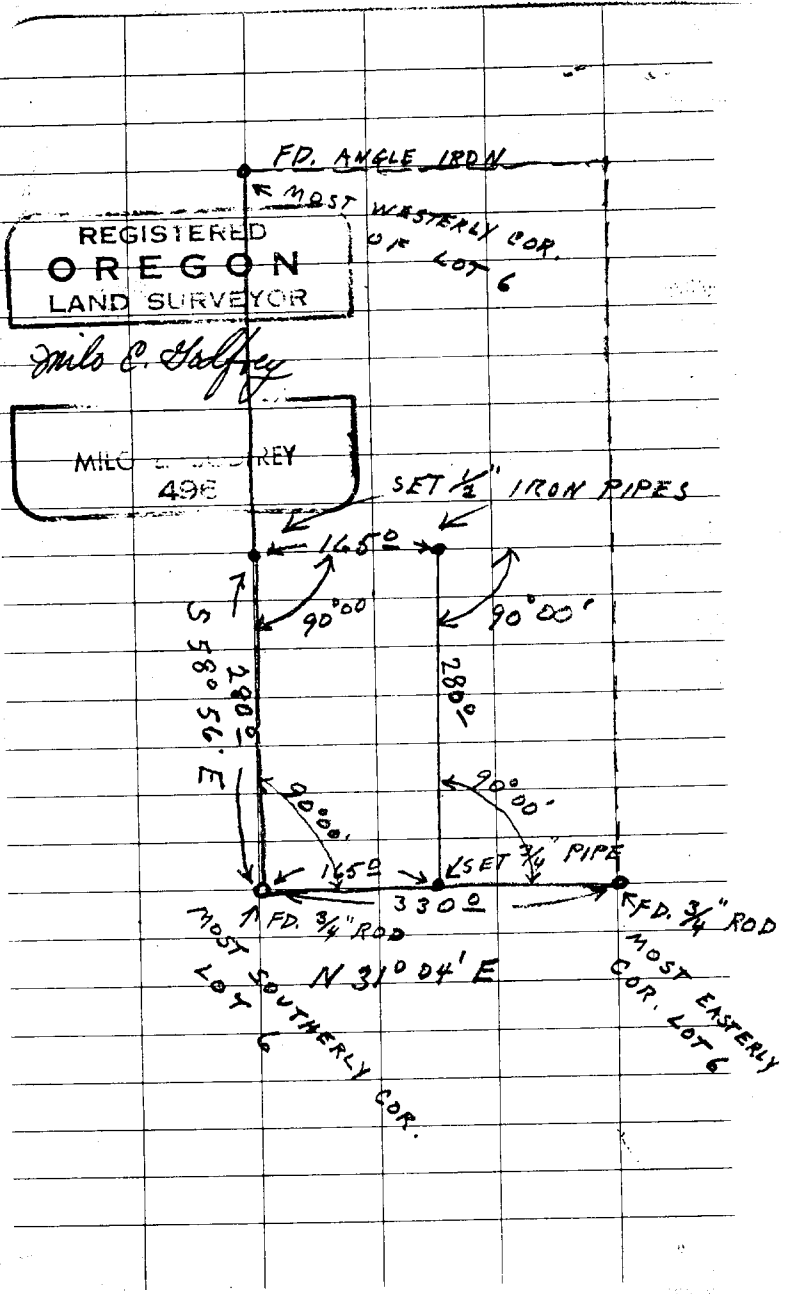
Bearings are based on West Line of
 North Umpqua Hwy N 31° 04' E.

FILED *LL*
 RECEIVED

COUNTY SURVEYOR
 DOUGLAS COUNTY, ORE.



COUNTY SURVEYOR'S FILE DATA
 DO NOT REMOVE FROM OFFICE



SURVEY FOR HOWARD CLEMENS
 PORTION OF LOT 6 "PHILLIPPI
 ACRES" IN SEC. 21, T26SR4W
 MARCH 24, 1966

M. GODFREY
 CH. - RAY GODFREY

BASE OF BEARINGS
 N 31° 04' E ALONG R/W LINE
 OF N. UMPQUA HWY

DIETZGEN NO. 385-3

C. S. File No. 51/341 B