

**A SURVEY TO ESTABLISH PROP CORRS.
IN D.L.C. #52 T27S R7W W.M.
SURVEYED FOR HAYWARD REED 10-19-1966
BY DON E. GARRETT SCALE 1"=300'**

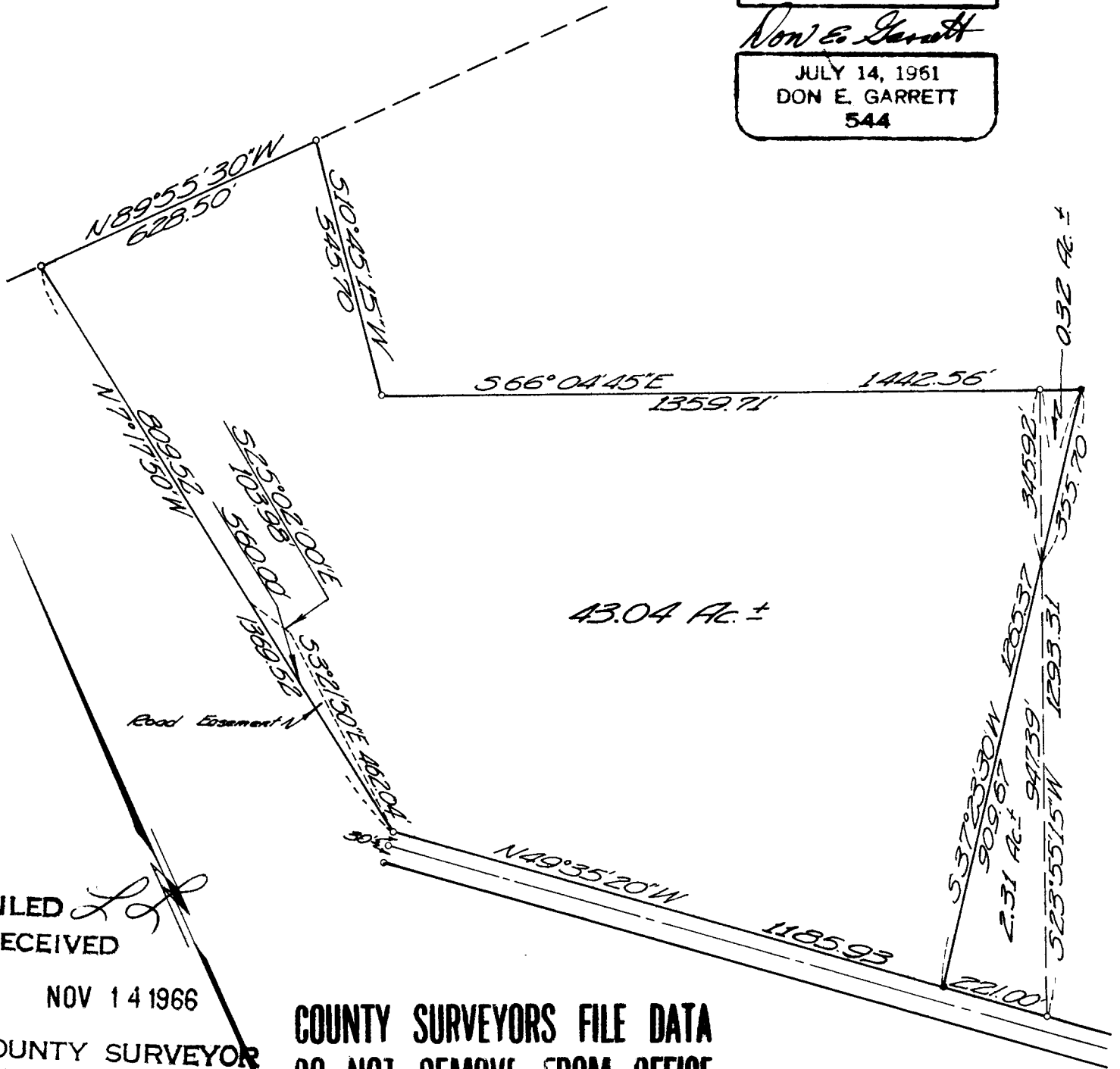
Bearings are based on the most easterly line of the prop. surveyed,
from a Survey by Don Garrett as found in C.S. Map File M22-76

- o - Found 5/8" Iron Rod
- - Set 5/8" Iron Rod

REGISTERED
OREGON
LAND SURVEYOR

Don E. Garrett

JULY 14, 1961
DON E. GARRETT
544



FILED *LL*
RECEIVED

NOV 14 1966

COUNTY SURVEYOR
DOUGLAS COUNTY, ORE.

**COUNTY SURVEYORS FILE DATA
DO NOT REMOVE FROM OFFICE**