

FILED *LL*
RECEIVED

MAR 30 1966

COUNTY SURVEYOR
DOUGLAS COUNTY, ORE.

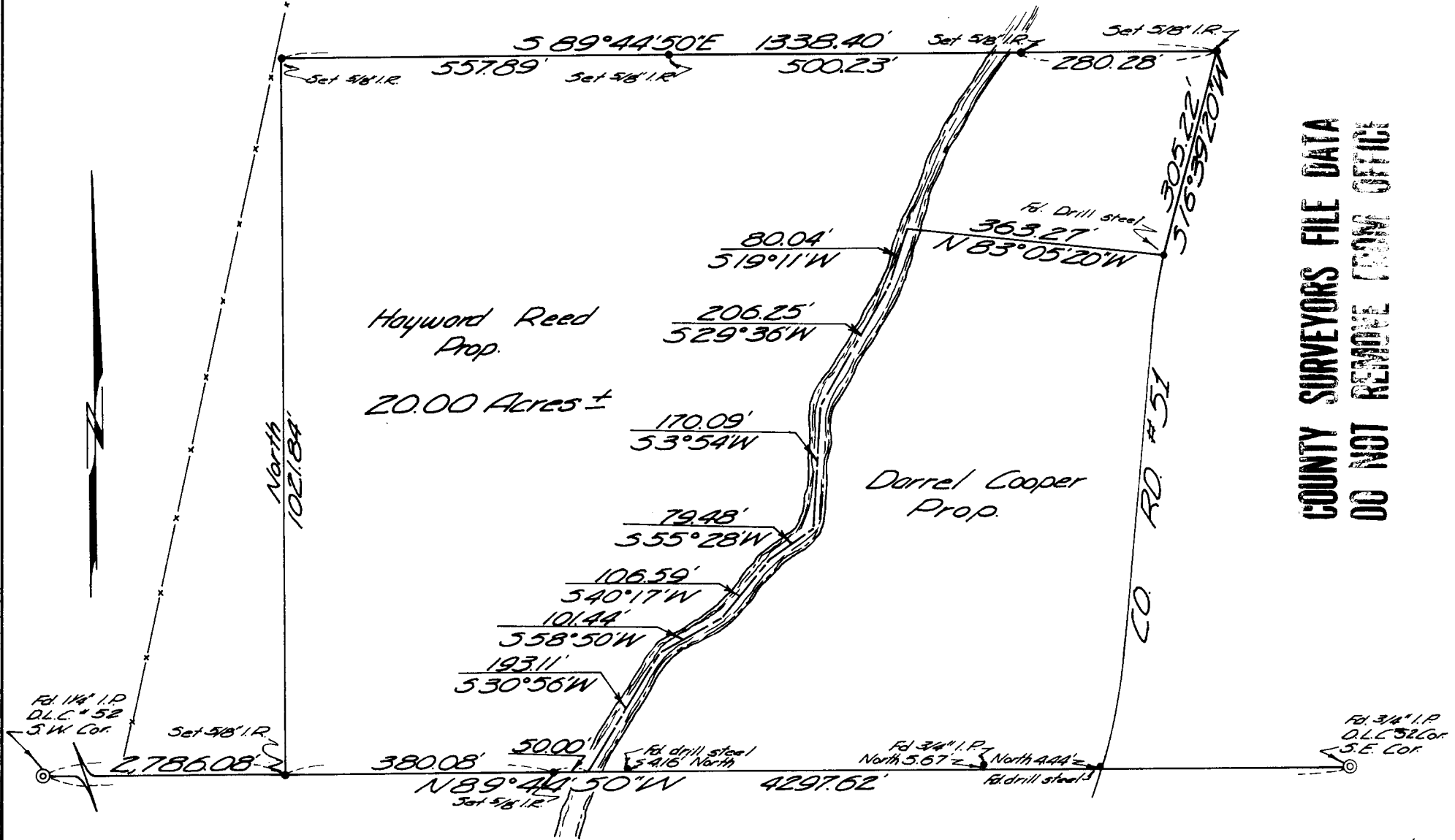
A SURVEY TO ESTABLISH PROPERTY CORNERS
IN DLC #52 T27S R7W W.M. S 38.29
SURVEYED FOR HAYWARD REED
SURVEYED BY DON E. GARRETT
SURVEYED MARCH 22, 1966 SCALE 1"-200'

REGISTERED
OREGON
LAND SURVEYOR

Don E. Garrett

JULY 14, 1961
DON E. GARRETT
544

Bearings are based on the centerline of Melrose-Reston Co. Rd. #51



COUNTY SURVEYORS FILE DATA
DO NOT REMOVE FROM OFFICE