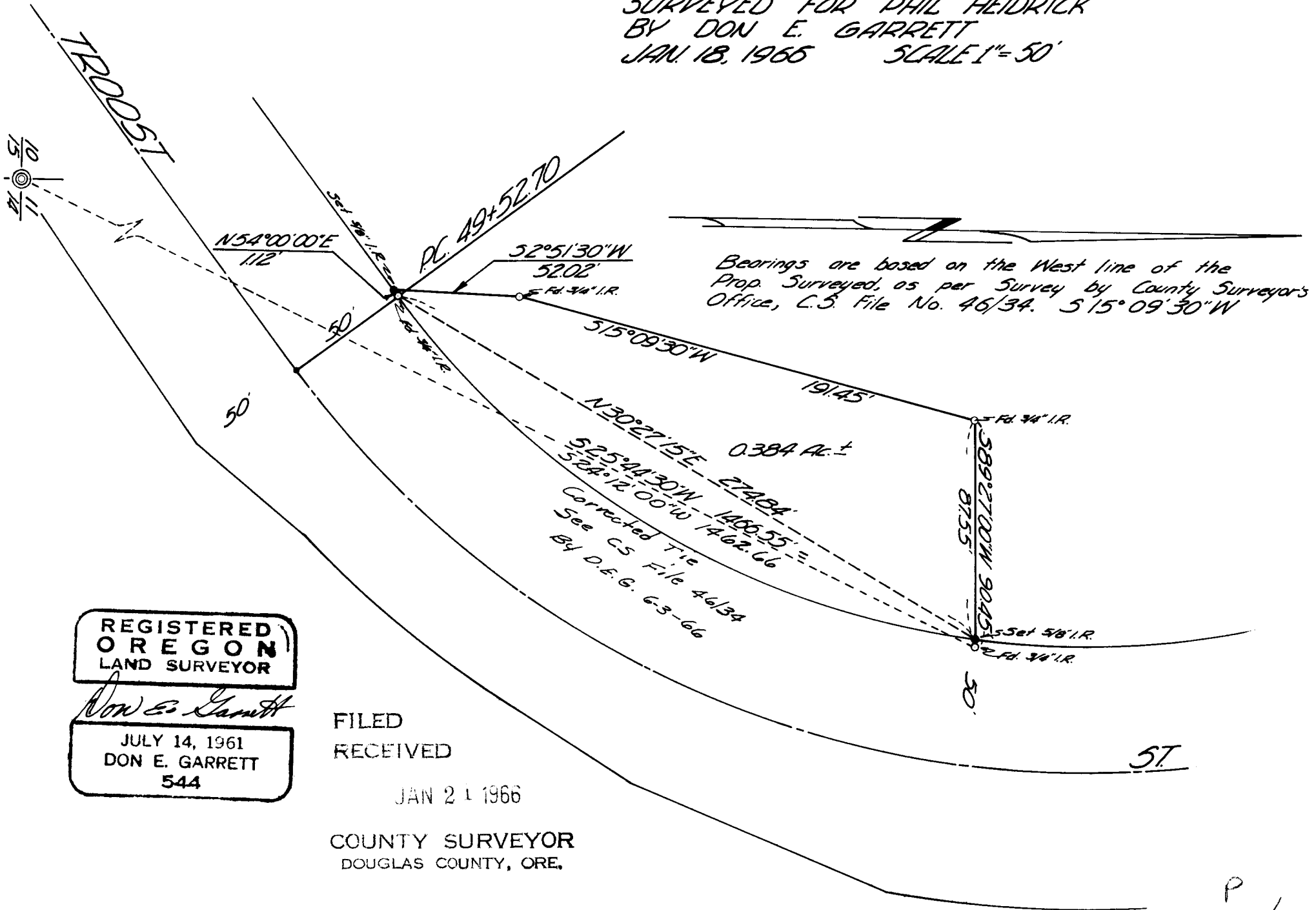


**COUNTY SURVEYORS FILE DATA
DO NOT REMOVE FROM OFFICE**

*SURVEY FOR DEED DESCRIPTION
IN SEC 11 T27S R6W W.M.
SURVEYED FOR PHIL HEIDRICK
BY DON E. GARRETT
JAN. 18, 1965 SCALE 1"=50'*



Bearings are based on the West line of the Prop. Surveyed, as per Survey by County Surveyor's Office, C.S. File No. 46/34. 515°09'30\"/>

**REGISTERED
OREGON
LAND SURVEYOR**

Don E. Garrett
JULY 14, 1961
DON E. GARRETT
544

FILED
RECEIVED

JAN 21 1966

COUNTY SURVEYOR
DOUGLAS COUNTY, ORE.

P
51/334-1