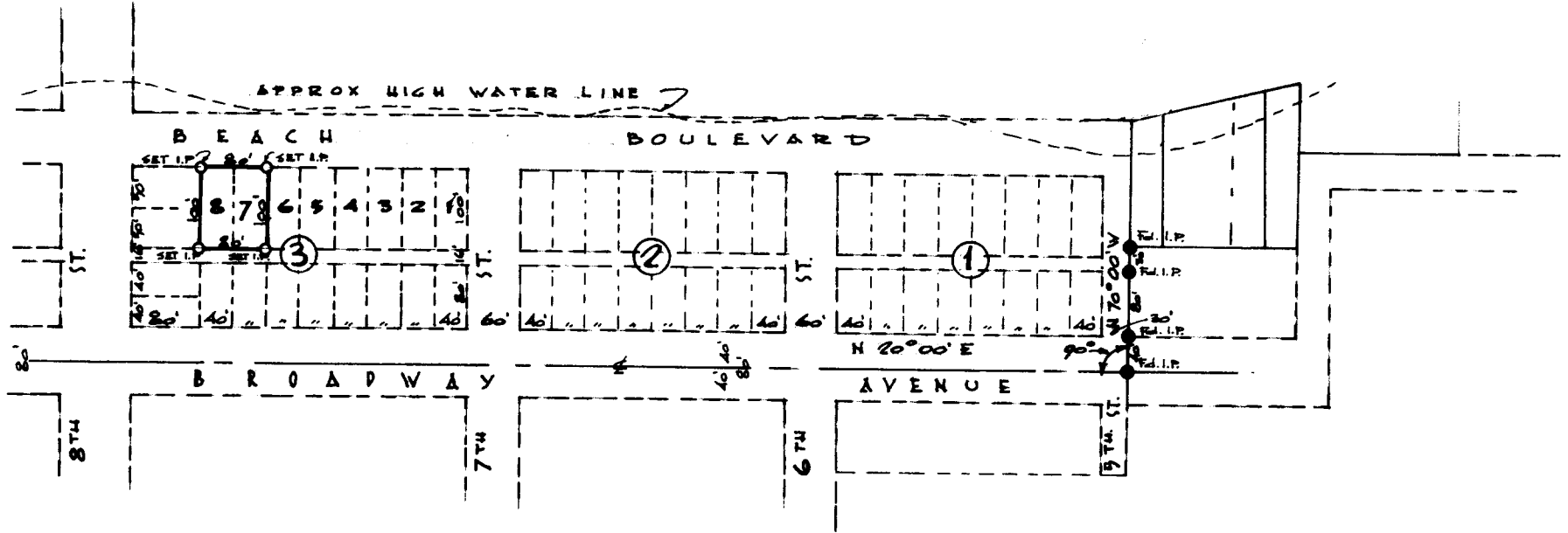
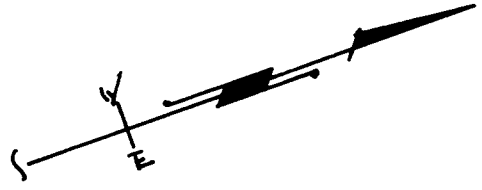


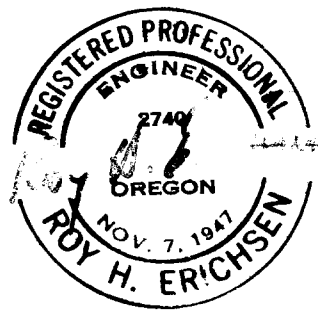
COUNTY SURVEYORS FILE DATA
DO NOT REMOVE FROM OFFICE



FILED *LL*
RECEIVED

JAN 14 1966

COUNTY SURVEYOR
DOUGLAS COUNTY, ORE.



R. H. ERICHSEN & ASSOCIATES
CONSULTING ENGINEERS
COOS BAY OREGON.

PROPERTY SURVEY
OF LOT 7 & 8 BLOCK 3
WINCHESTER BAY,
DOUGLAS COUNTY, OREGON
DATE: 8-12-65 SCALE: 1" = 200'

FOR: ALTON FREDERICK,
P.O. Box 529, SCOTTSBURG, OREGON

T. 22-12 SE NW 1/4 S. 7

File No. 51/3338