

COUNTY SURVEYORS FILE DATA
DO NOT REMOVE FROM OFFICE

Section 23 - 21S - 12WNM.
Section 26 - 21S - 12WNM.

FILED *LL*
RECEIVED

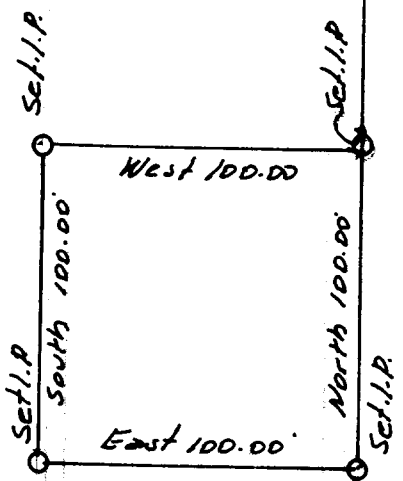
JAN 14 1966

COUNTY SURVEYOR
DOUGLAS COUNTY, ORE.

Fd.I.P. & Brass
Cap. - North 1/4 26
Corner Section 21 South
Township 21 South
Range 12 W.W.M

NORTH

North 714.92'



South 8°52' West
to W.C.T. Co. Bldg
at Reed'sport

PROPERTY SURVEY
Portion N.W. 1/4 N.E. 1/4 Section 26
Township 21 South, Range 12 W.W.M.
Douglas County Oregon
Scale: 1" = 100' 10-9-1965
For: West Coast Telephone Co
1800 - 41st Street
Everett, Washington

