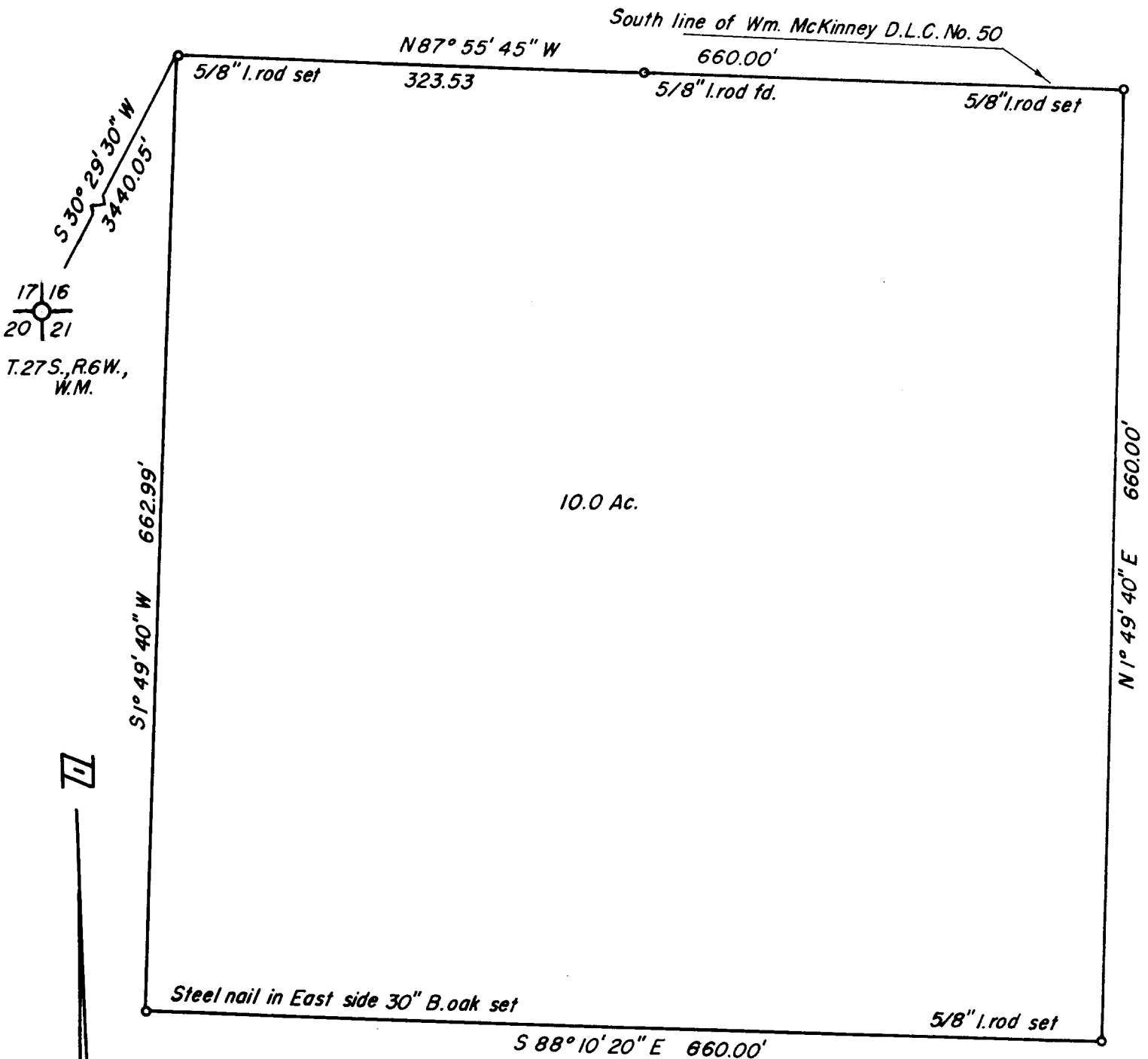


**COUNTY SURVEYORS FILE DATA
DO NOT REMOVE FROM OFFICE**

N. 1/2 - 377



10.0 Ac.

**SURVEY FOR RAY GRAVES
SECTION 16, T. 27 S., R. 6 W., W.M.
SURVEYED BY R. H. GEE
FEBRUARY, 1966
SCALE 1" = 100'**

FILED *LL*
RECEIVED

MAR 10 1966

COUNTY SURVEYOR
DOUGLAS COUNTY, ORE.

SEE 3 PARCELS
U.S. 55/1173



C. S. File No. 51/329.4