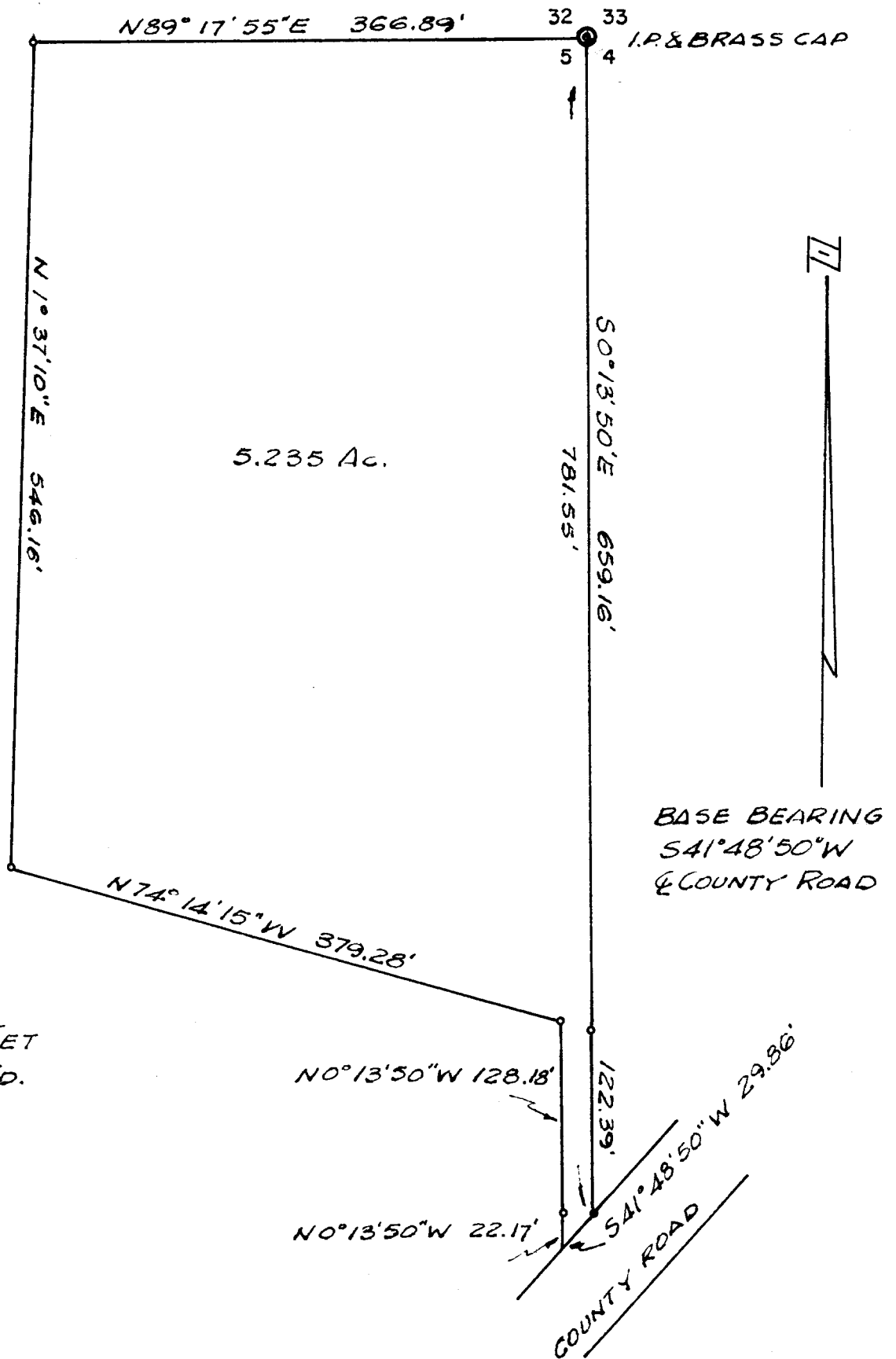


**COUNTY SURVEYORS FILE DATA
DO NOT REMOVE FROM OFFICE**



- 3/4" I. ROD SET
- 3/4" I. ROD FD.

SURVEY FOR BUDDY E. MOORE
 SEC. 5, T. 31 S., R. 6 W., W.M.
 SURVEYED BY R.H.GEE
 NOVEMBER, 1965
 SCALE 1" = 100'

FILED RECEIVED

NOV 19 1965

COUNTY SURVEYOR
DOUGLAS COUNTY, ORE.

