

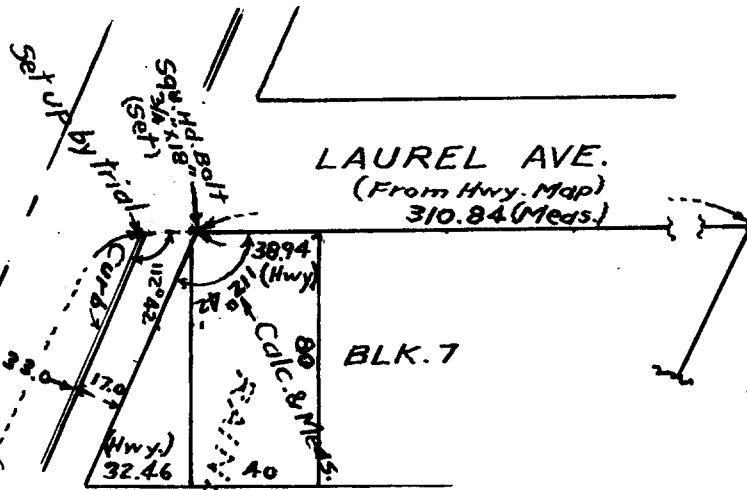
LAUREL AVE.  
(From Hwy. Map)  
310.84 (Meds.)

BLK. 7

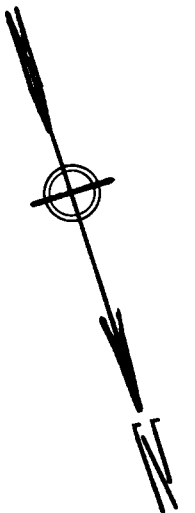
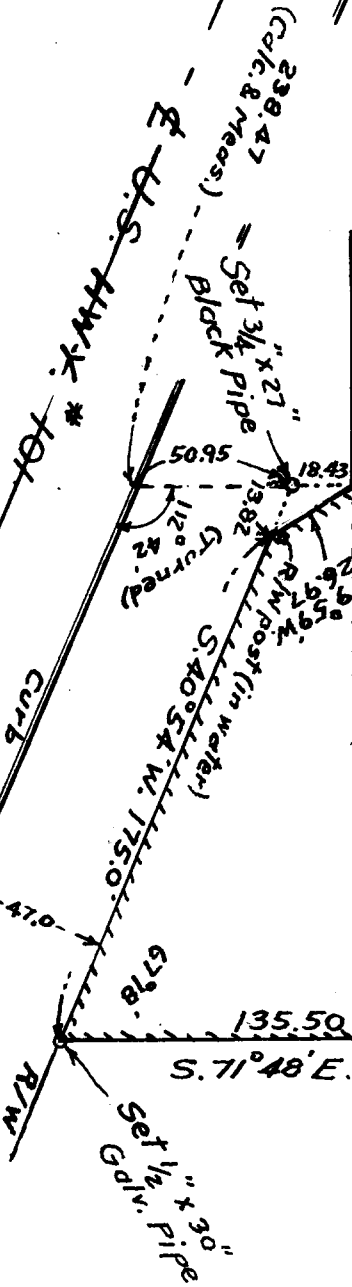
MYRTLE AVE.

N. 71° 48' W. (Rec. Plat)

40	40	40	40
11	10	9	8
BLK. 12			
N. 71° 48' W.			



Bearings are relative to those  
on record plat of Rainbow Add.

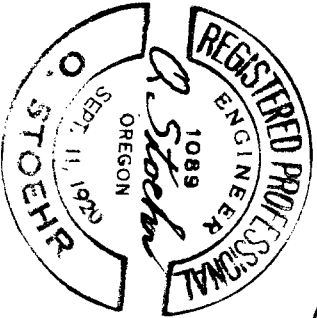


FILED  
RECEIVED

MAR 21 1966

COUNTY SURVEYOR  
DOUGLAS COUNTY, ORE.

O.K. [Signature]



SURVEY OF  
PART OF VACATED LOTS 1, 2 & 3  
BLK. 12, RAINBOW ADD. & TRACT  
ADJACENT THERETO.

REEDSPORT, ORE.

Feb. 25, 1966.

Scale: 1" = 60'

In S.E. 1/4 Sec. 34, T. 21 S, R. 12 W, W.M.

File No. 51/328-P

COUNTY SURVEYORS FILE DATA  
DO NOT REMOVE FROM OFFICE