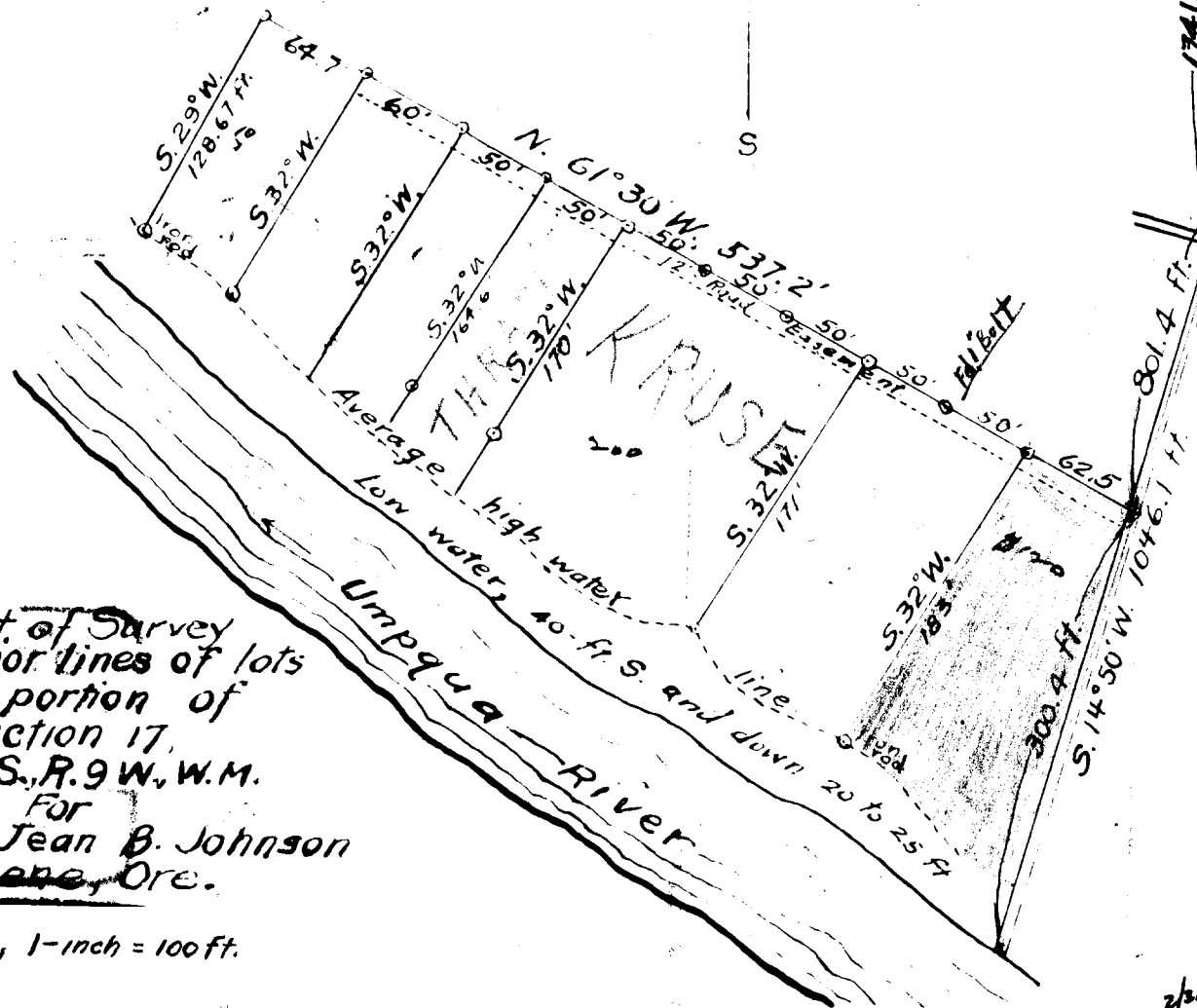
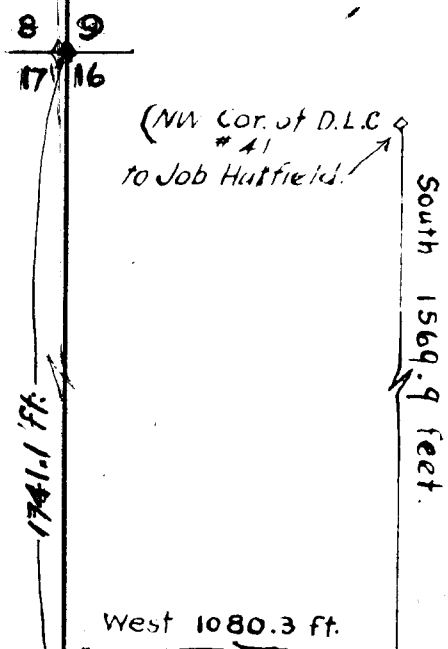
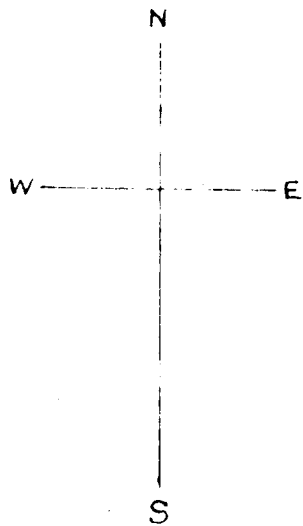


FILED *LL*
 RECEIVED *PRINT ONLY*
 FILED BY W. HAINES
 NOV 16 1965

COUNTY SURVEYOR
 DOUGLAS COUNTY, ORE.

COUNTY SURVEYORS' FILE DATA
 DO NOT REMOVE FROM OFFICE



Plat of Survey
 of interior lines of lots
 in a portion of
 Section 17,
 T.22 S., R.9 W., W.M.

For
 Arna J. & Jean B. Johnson
 Eugene, Ore.

Scale, 1-inch = 100 ft.

REGISTERED
OREGON
 LAND SURVEYOR

JULY 7, 1944
 Arthur R. Wilcox
 41

C.S. File 51-327
 SEE ALSO M 37-55
 Map File M 304-67