

FILED
RECEIVED

DEDICATED ST.

MAY 9 1967

492.5'

Found 1/2" pipe
(3/4")

COUNTY SURVEYOR
DOUGLAS COUNTY, ORE.

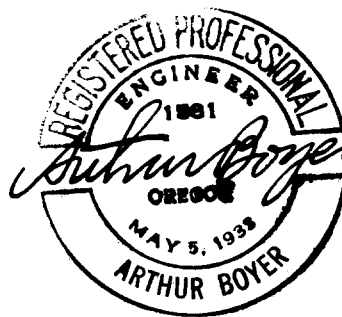
40'

ROAD

"LOT 6" (10 ac. to cen. roads)

C.S. FILE 42/154

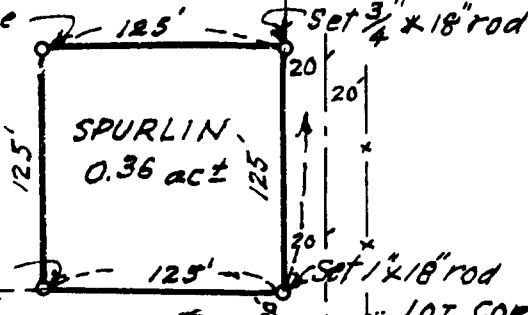
MAP FILE M 23/66
CO. SURVEYOR.



810' COUNTY

Set 1/2" x 18" iron pipe

Set 3/4" x 18" rod



Found 1/2" Iron Pipe

Set 1/2" x 18" rod

Set 1/2" x 18" rod

LOT COR

Set 60 d. spike

862.4'

492.5'

310'

SE COR.
DLC 52 28/6

COUNTY SURVEYORS FILE DATA
DO NOT REMOVE FROM OFFICE

ELDON E SPURLIN IN
(PT. "LOT 6") PLAT F, ROSEBRG HM. ORCA. TRS.
SEC. 22 T. 28S; R. 6W; WM. DOUGLAS COUNTY, ORE.
MAY 1967 AB. 1" = 100'