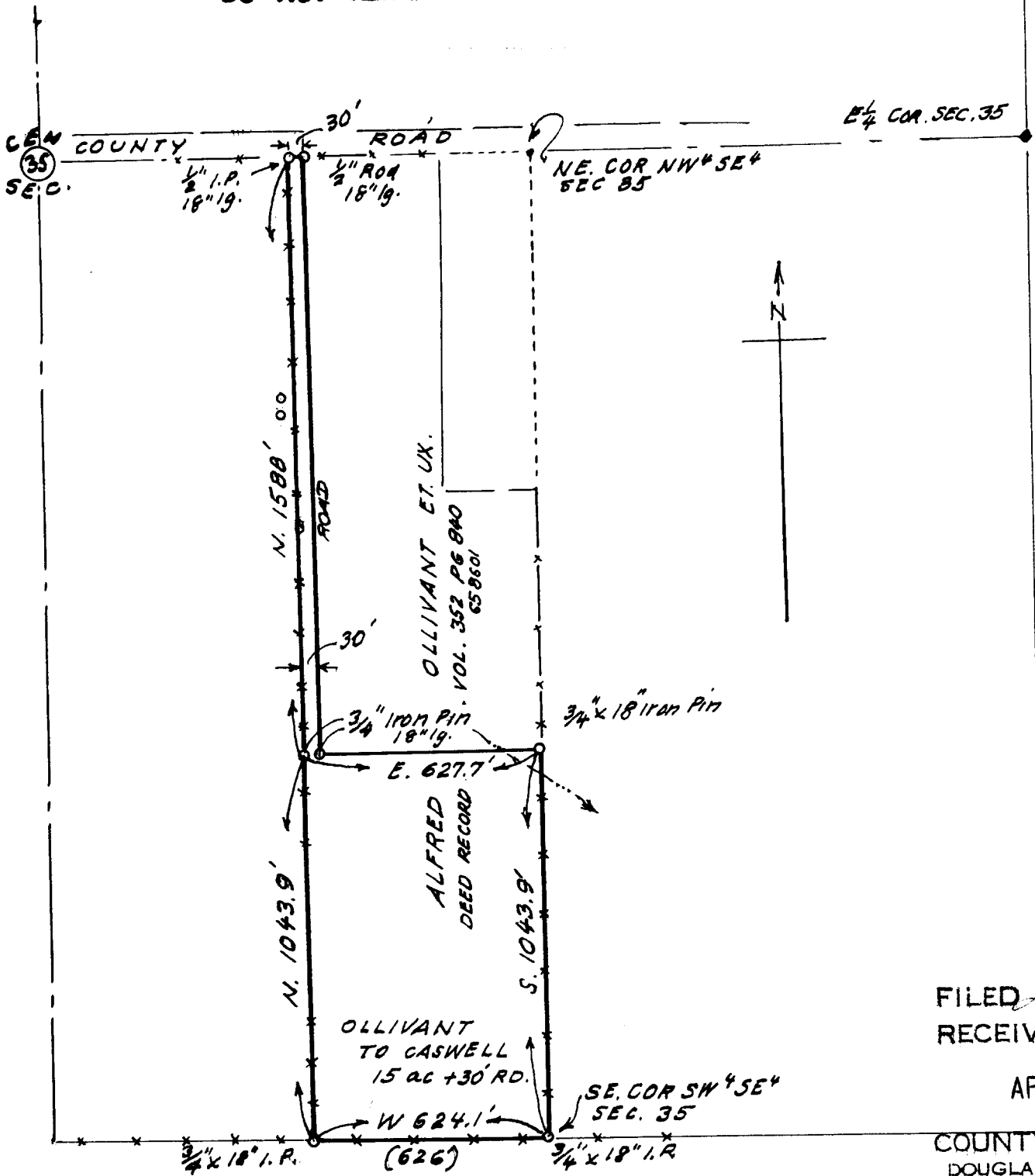


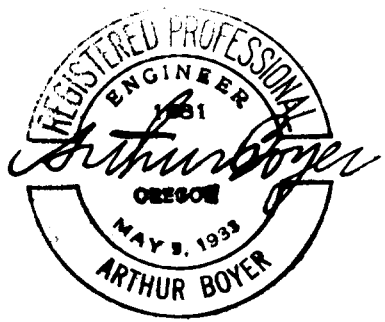
**COUNTY SURVEYORS FILE DATA
DO NOT REMOVE FROM OFFICE**



FILED
RECEIVED

APR 24 1967

COUNTY SURV
DOUGLAS COUNTY,



ALFRED OLLIVANT & WF. TO IVAN CASWELL & WF.	
15 AC ±, PLUS 30' ROAD. IN SEC. 35, T. 27S; R. 7W; W.M.; DOUGLAS COUNTY, ORE	
APR. 1967	1" = 40 FC.