

N.E. 1/4 SEC. 12 T27S R6W W.M.
 Surveyed for S&S Builders
 Surveyed by Don E. Garrett
 December 11, 1965
 Scale 1"=50'

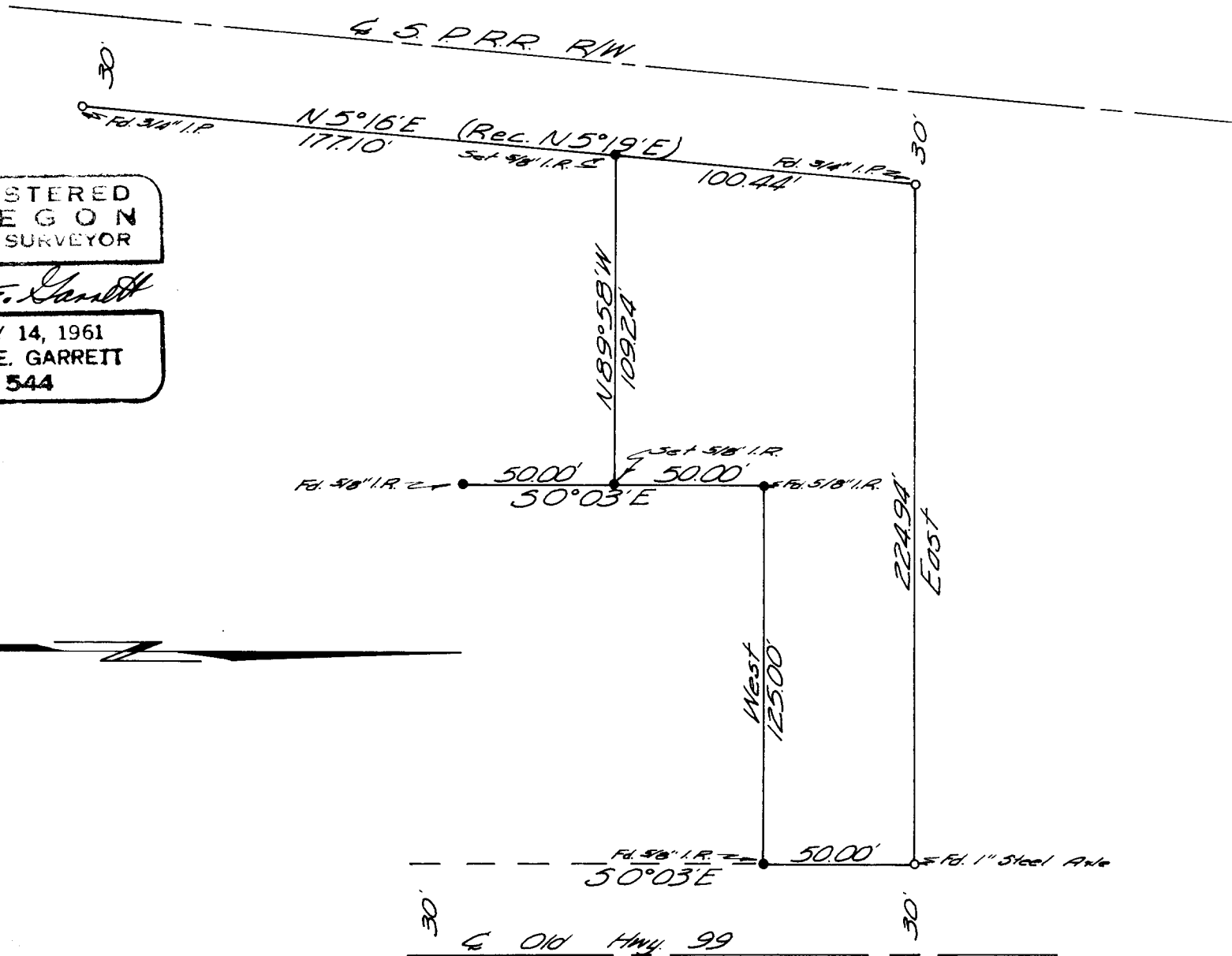
**COUNTY SURVEYORS FILE DATA
 DO NOT REMOVE FROM OFFICE**

Bearings are based on the West Line of U.S. 99 Business Route S 0° 03' E

REGISTERED
 OREGON
 LAND SURVEYOR

Don E. Garrett

JULY 14, 1961
 DON E. GARRETT
 544



LL

DEC 13 1965