

Lot 44, Roseburg Home Orchard Tracts, Sec 7, T26S R5W W1A
 Retrocement of a Survey by N. E. Richardson (L.S. File 58 drawer 39)
 Retraced for Charles Holcomb Oct. 25, 1965
 By Don E. Garrett Scale 1"=100'

**COUNTY SURVEYORS FILE DATA
 DO NOT REMOVE FROM OFFICE**

REGISTERED
 OREGON
 LAND SURVEYOR

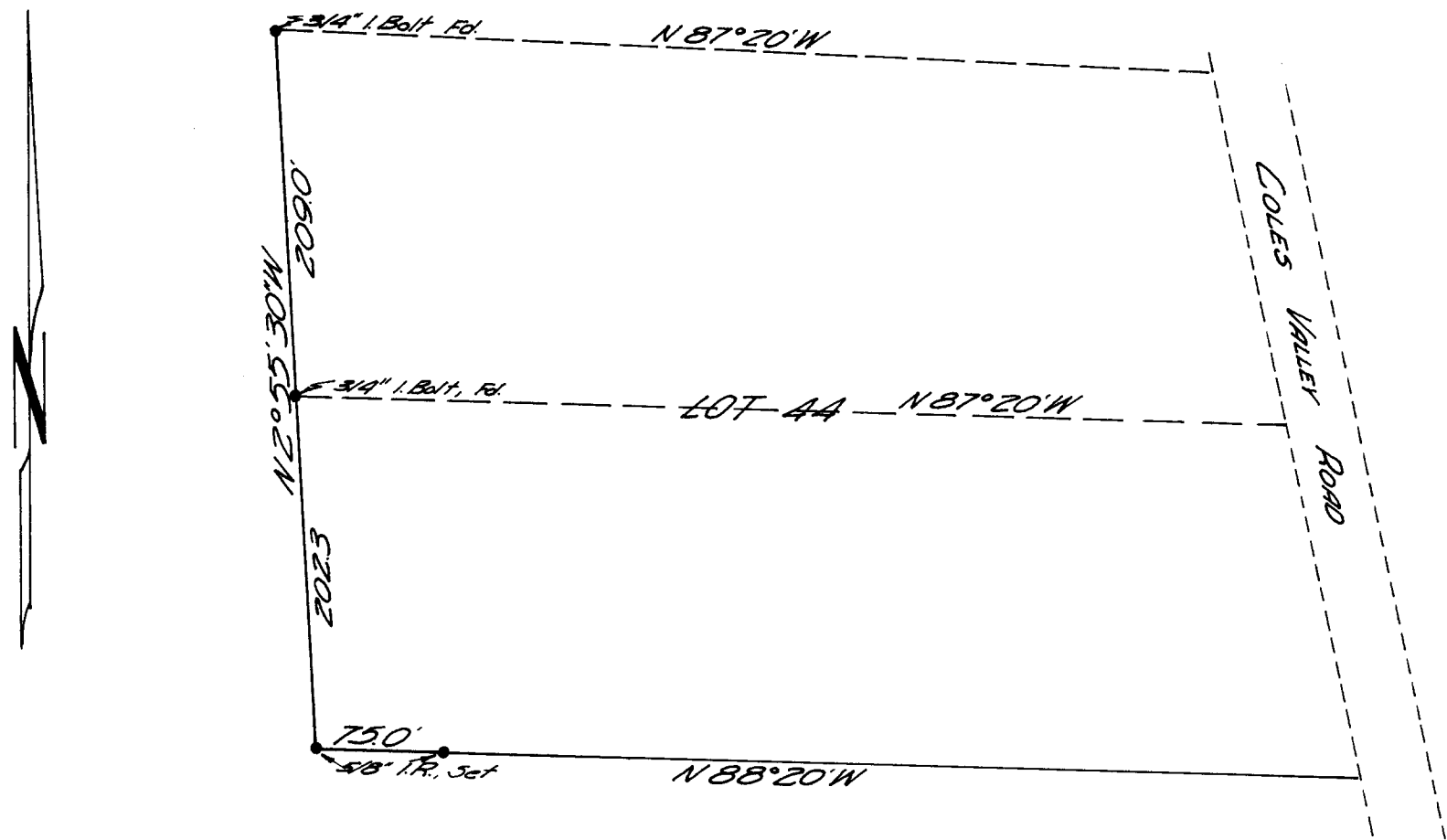
Don E. Garrett

JULY 14, 1961
 DON E. GARRETT
 544

FILED *LG*
 RECEIVED

NOV 5 1965

COUNTY SURVEYOR
 DOUGLAS COUNTY, ORE.



P/325-1