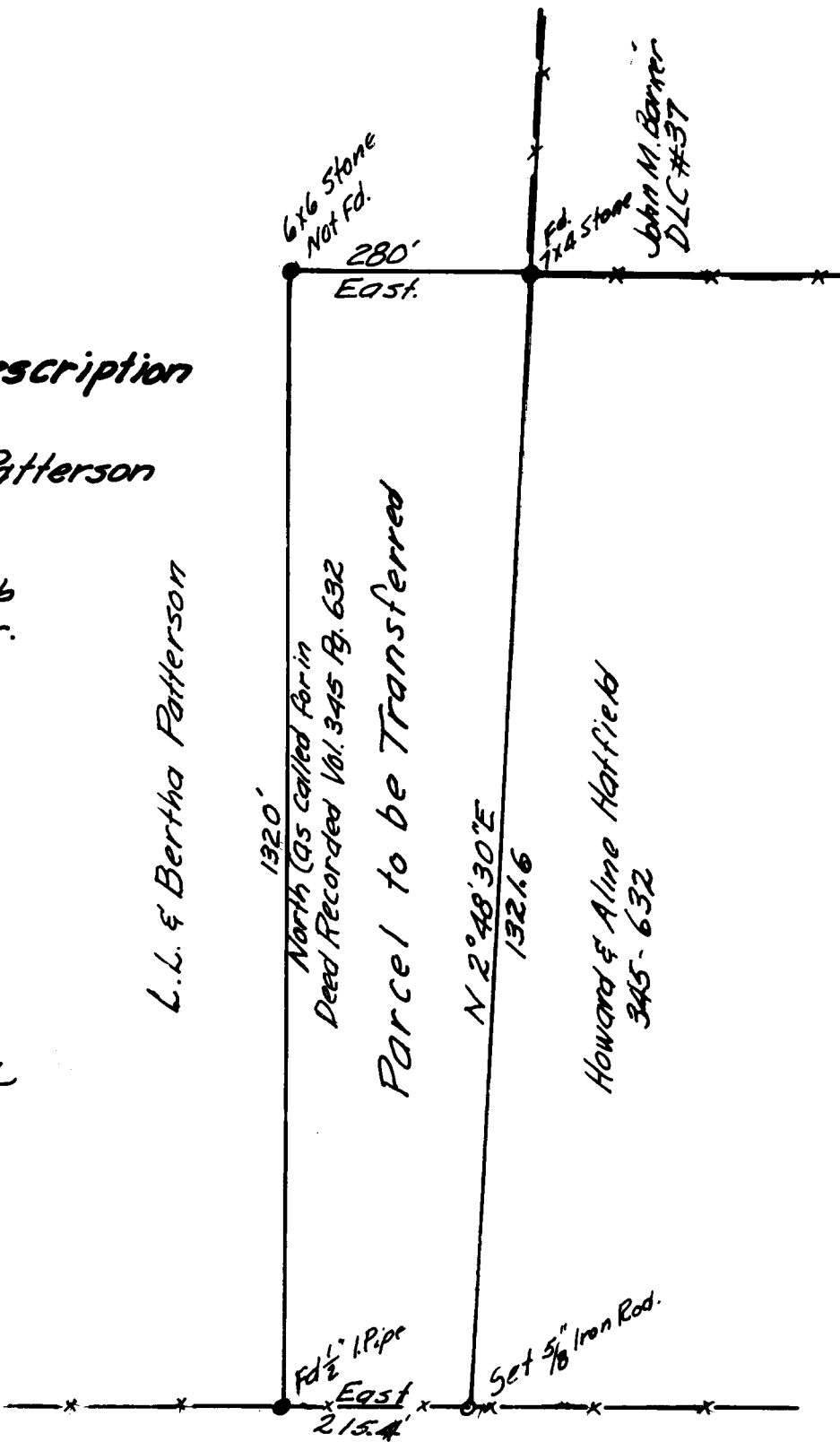
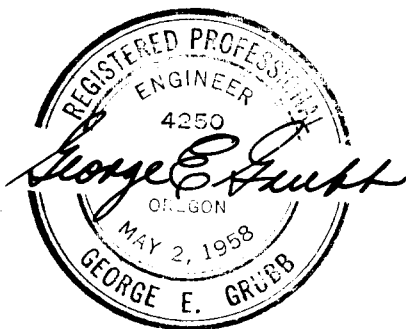


**Survey for Deed Description
for**

**Lucius L. & Bertha Patterson
Feb. 5, 1966**

**by George E. Grubb
Reg. Prof. Engr.**



Scale: 1" = 200'

FILED
RECEIVED

FEB 14 1966

COUNTY SURVEYOR
DOUGLAS COUNTY, ORE.

Sec. 2, T 28S, R 5 W.W.M.

**COUNTY SURVEYORS FILE DATA
DO NOT REMOVE FROM OFFICE**