

SURVEY TO MONUMENT PROPERTY LINE  
SECTION 1, T.26S., R.6W.W.M.

SURVEYED FOR - EARL STONEROD

SURVEYED BY - BAUGHMAN SURVEYING SERVICE

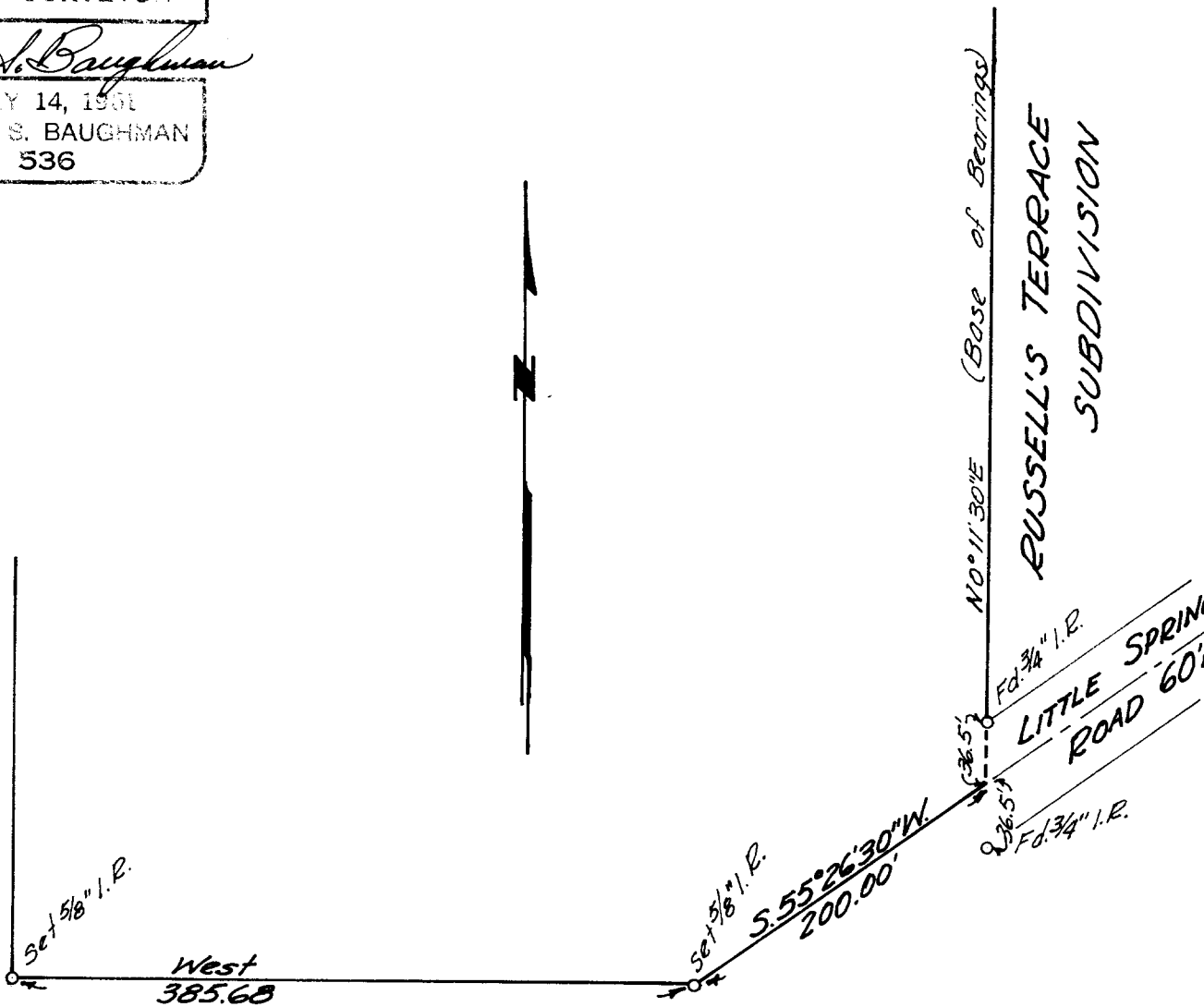
Scale 1"=100'

Feb., 1966

REGISTERED  
OREGON  
LAND SURVEYOR

*Glenn S. Baughman*

JULY 14, 1951  
GLENN S. BAUGHMAN  
536



FILED  
RECEIVED

MAR 14 1966

COUNTY SURVEYOR  
DOUGLAS COUNTY, ORE.

COUNTY SURVEYORS FILE DATA  
DO NOT REMOVE FROM OFFICE

C. S. File No. 51/322