

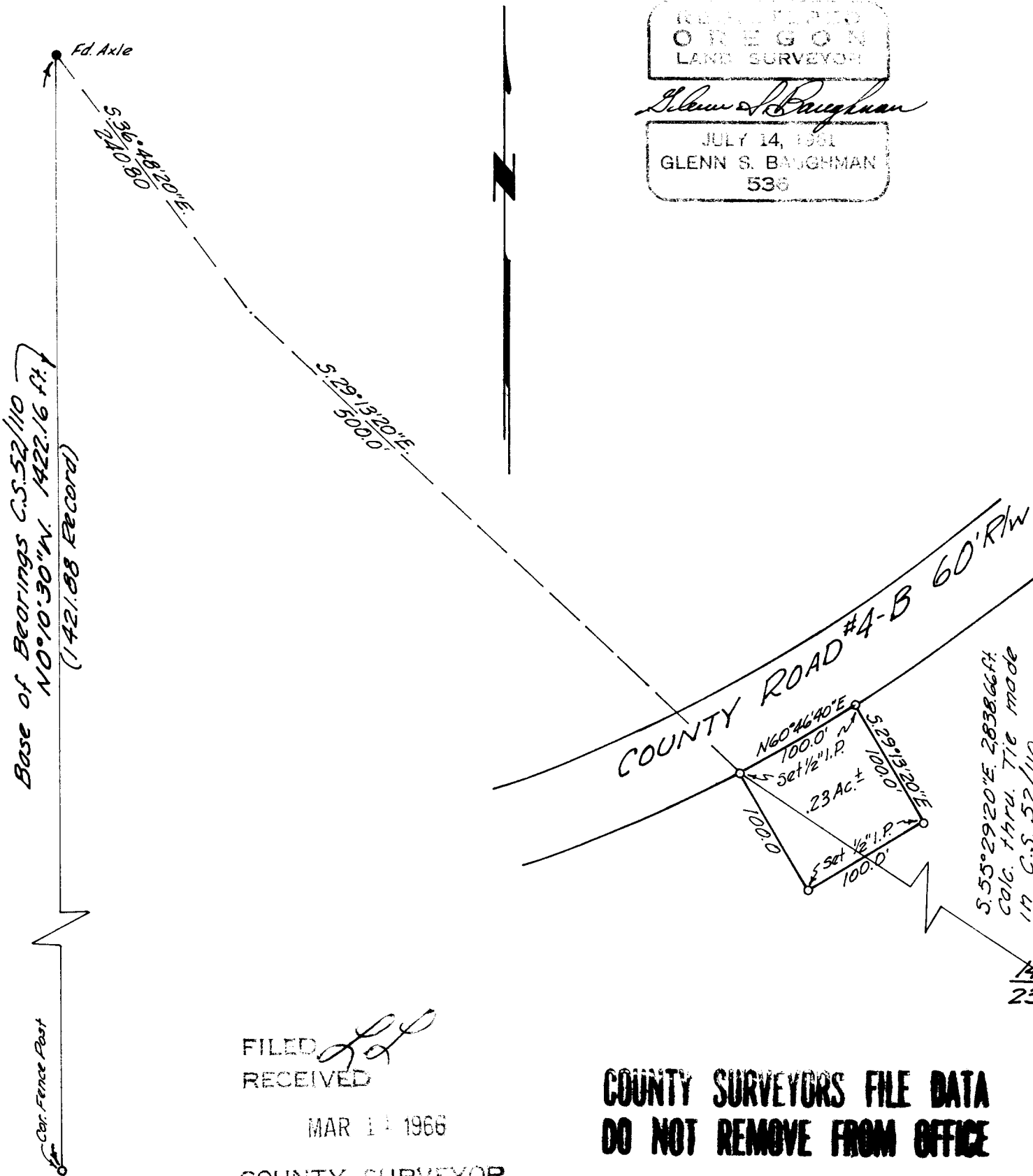
SURVEY FOR PROPERTY DESCRIPTION  
 SEC. 14, T. 26 S., R. 4 W. W. M.

SURVEYED FOR - GORDON CROOK  
 SURVEYED BY - BAUGHMAN SURVEYING SERVICE  
 Scale 1" = 100' Feb, 1966

REGISTERED  
 OREGON  
 LAND SURVEYOR

*Glenn S. Baughman*

JULY 14, 1961  
 GLENN S. BAUGHMAN  
 539



FILED *LL*  
 RECEIVED

MAR 14 1966

COUNTY SURVEYOR  
 DOUGLAS COUNTY, ORE.

COUNTY SURVEYORS FILE DATA  
 DO NOT REMOVE FROM OFFICE