

FILED  
RECEIVED

AUG 31 1965

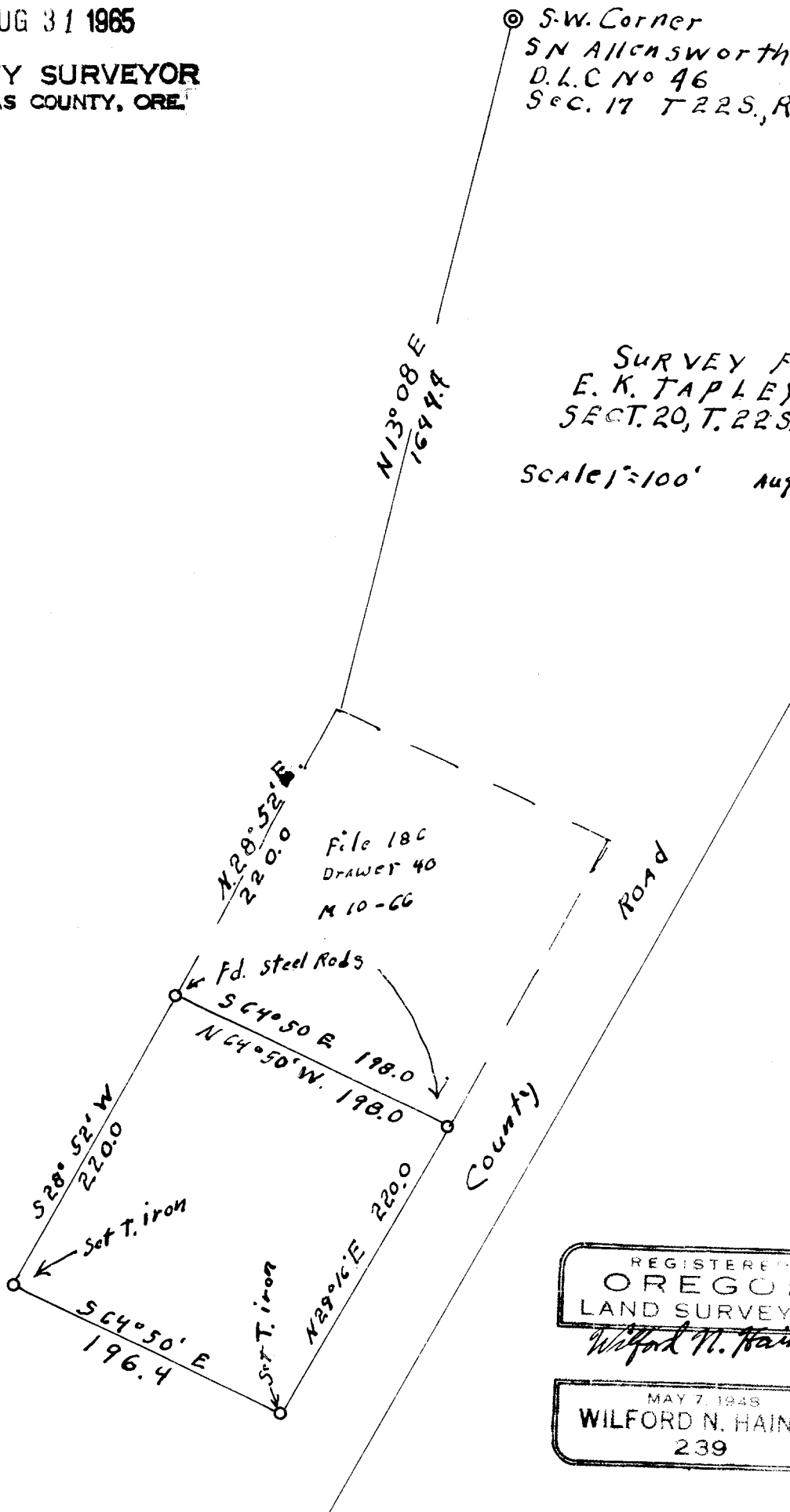
COUNTY SURVEYOR  
DOUGLAS COUNTY, ORE.

**DO NOT REMOVE FROM OFFICE**

⊙ S.W. Corner  
SN Ailensworth  
D.L.C No 46  
SEC. 17 T. 22S., R. 8 W. W.M.

SURVEY FOR  
E. K. TAPLEY  
SECT. 20, T. 22S., R. 8 W. W.M.

SCALE 1" = 100' Aug. 24, 1965



REGISTERED  
OREGON  
LAND SURVEYOR  
*Wilford N. Haines*  
MAY 7 1946  
WILFORD N. HAINES  
239