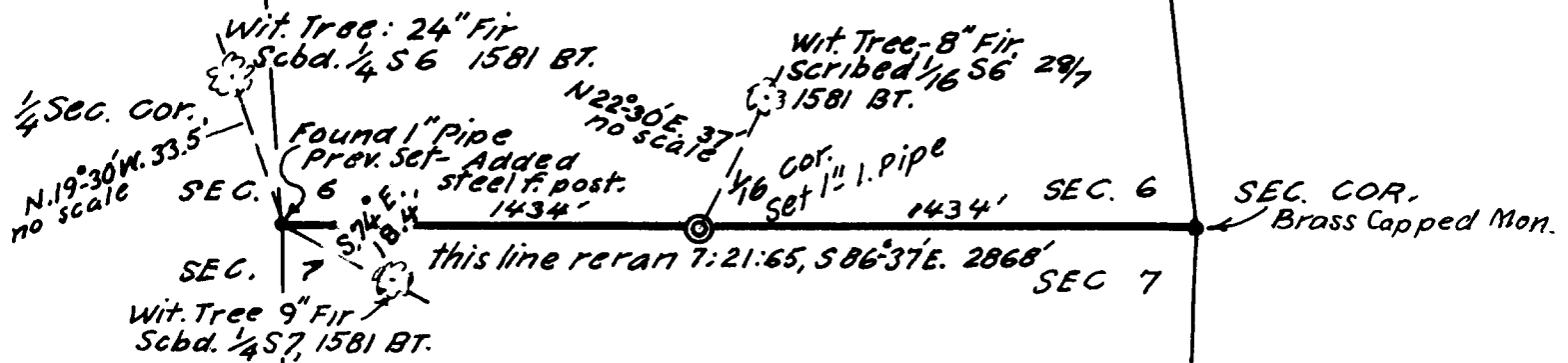
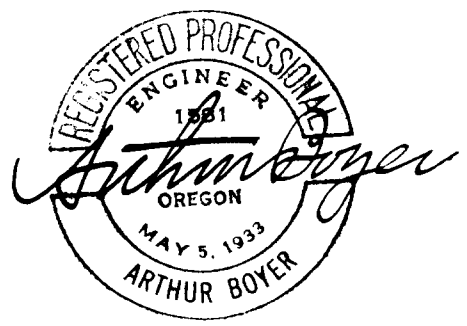


COUNTY SURVEYORS FILE DATA
 DO NOT REMOVE FROM FILE

S.E. 1/4 SEC. 6, T.28S; R.7W; W.M.



Trees scribed and new corner (1/16 COR) set July 21, 1965
 Witnesses: W.V. Monger, Don Colwell, Lloyd Bufton, Hand L:N-craft.



FILED *LL*
 RECEIVED

AUG 10 1965

COUNTY SURVEYOR
 DOUGLAS COUNTY, ORE.

W.V. MONGER R.F.D. NO. 4, ROSEBURG, ORE.	
1/16 SEC. COR.; S. SIDE SE 1/4 SEC. 6, T.28S; R.7W; W.M., DOUGLAS COUNTY, ORE.	
JULY-AUG 1965	1" = 600 ft.

File No. 51/317