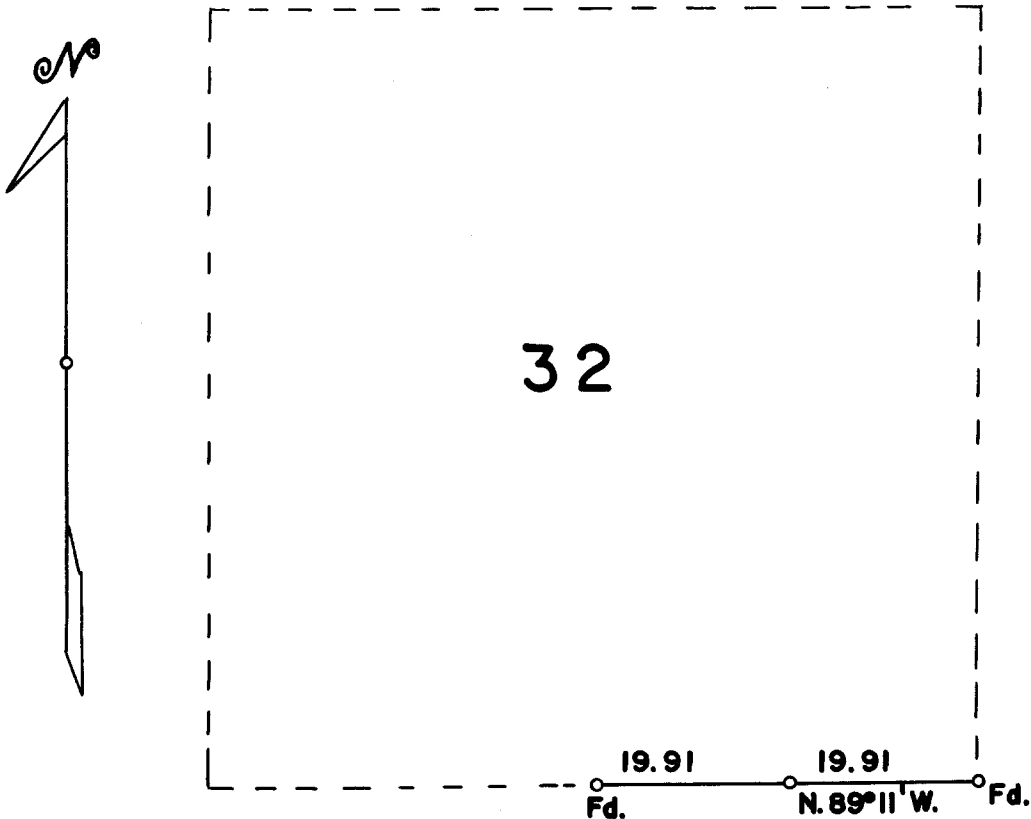


COUNTY SURVEYORS FILE DATA  
DO NOT REMOVE FROM OFFICE

T.30S., R.6W., W.M. DOUGLAS COUNTY  
OREGON

DEPENDENT RESURVEY OF THE EAST HALF BETWEEN  
SECTIONS 5 AND 32



Scale: 1 inch = 20 chains

Mean Magnetic Declination 20° E.

The bearing of this line is referred to the true meridian  
determined by a solar observation

o = Corner Occupied and Monumented

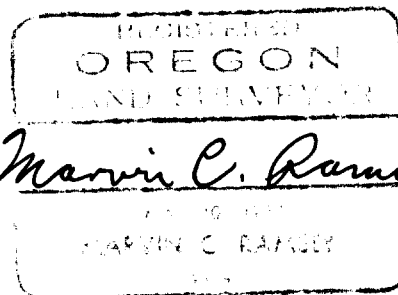
Survey executed July 21, 1965 for J.H. Baxter & Co.

I hereby certify that the survey represented by this  
plat is executed in conformity with the laws of  
the State of Oregon.

FILED  
RECEIVED

AUG 9 1965

COUNTY SURVEYOR  
DOUGLAS COUNTY, ORE.



TOWNSHIP 30 SOUTH, RANGE 6 WEST, WILLAMETTE MERIDIAN, OREGON

DEPENDENT RESURVEY OF THE EAST HALF BETWEEN SECTIONS 5 AND 32

EXECUTED AT THE REQUEST OF J. H. BAXTER & CO.

OF

ROSEBURG, OREGON

BY

Marvin C. Ramsey, Registered Professional Land Surveyor

Assistants

Paul E. Jonas

Gerald W. Kinney

Survey executed on July 21, 1965

FILED  
RECEIVED

AUG 9 1965

COUNTY SURVEYOR  
DOUGLAS COUNTY, ORE.

S. File No. 51/316b

Chains

The section corner of sections 4, 5, 32 and 33 is monumented and witnessed as by the County Surveyor, dated 1954.

The geographic position of this corner is latitude  $42^{\circ} 54' 43''$  N., and longitude  $123^{\circ} 25' 17''$  W. The observed magnetic declination is  $20^{\circ}$  East.

July 21, 1965: at this section corner at 9:15 a.m., P. S. T., I set off  $42^{\circ} 54' 43''$  N., on the latitude arc;  $20^{\circ} 26'$  N., on the declination arc of my Gurley solar transit and determine a meridian with the solar attachment.

Thence

N.  $89^{\circ} 11'$  W., on true line between sections 5 and 32.

19.91 Point for the East  $1/16$  section corner at proportionate distance

Set an iron pipe 3 ft. long 1 in. in diam., 28 ins. in the ground, from which

A Douglas fir 6 ins. in diam., bears N.  $30^{\circ}$  E., 17 lks. dist., mkd. E  $1/16$  S 32 RS404 BT

A Douglas fir 16 ins. in diam., bears S.  $68^{\circ}$  W., 13 lks. dist., mkd. E  $1/16$  S 5 RS404 BT

39.82 To the  $1/4$  section corner of sections 5 and 32 which is monumented and witnessed by the U. S. Bureau of Land Management, dated 1965.

---

I hereby certify that the bearing of the line recorded in this survey was determined by a solar observation and that the survey described in the foregoing field notes was executed in conformity with the laws of the State of Oregon.

REGISTERED  
OREGON  
LAND SURVEYOR

*Marvin C. Ramsey*

MAY 10, 1957  
MARVIN C. RAMSEY  
404

FILED  
RECEIVED

AUG 9 1965

COUNTY SURVEYOR  
DOUGLAS COUNTY, ORE.