

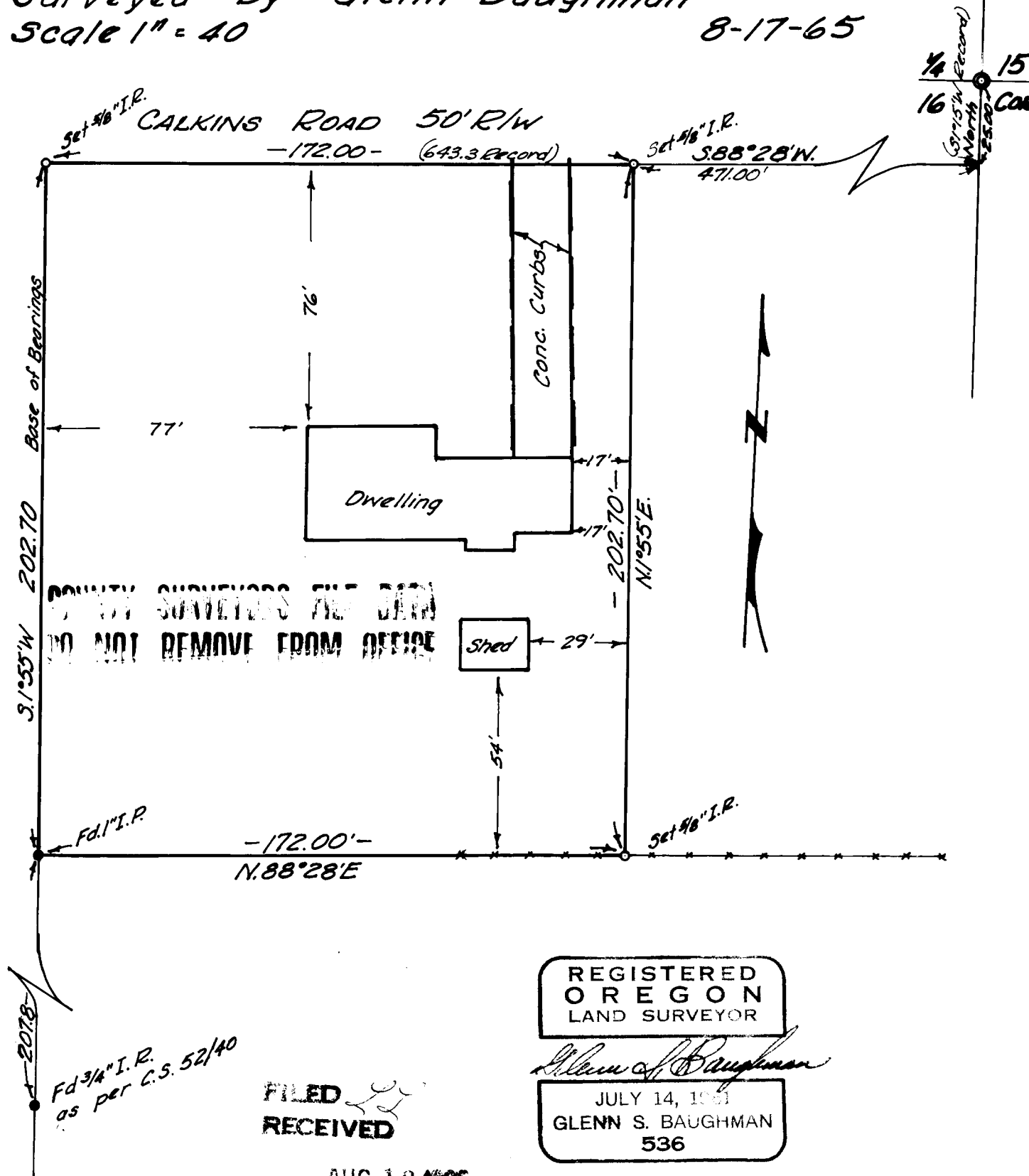
SURVEY TO ESTABLISH PROPERTY COR.
SECTION 16 T.27S., R.6W.W.M.

SURVEYED FOR DALLAS WITTY

Surveyed by Glenn Baughman

Scale 1" = 40

8-17-65



COUNTY SURVEYORS FILE DATA
DO NOT REMOVE FROM OFFICE

REGISTERED
OREGON
LAND SURVEYOR

Glenn S. Baughman

JULY 14, 1965
GLENN S. BAUGHMAN
536

FILED
RECEIVED

AUG 18 1965

COUNTY SURVEYOR
DOUGLAS COUNTY ORE.

207.8

Fd. 3/4" I.R.
as per C.S. 52/40

1/4
16
15
Coe
5915 W. Record
25.00'

51/315-0