

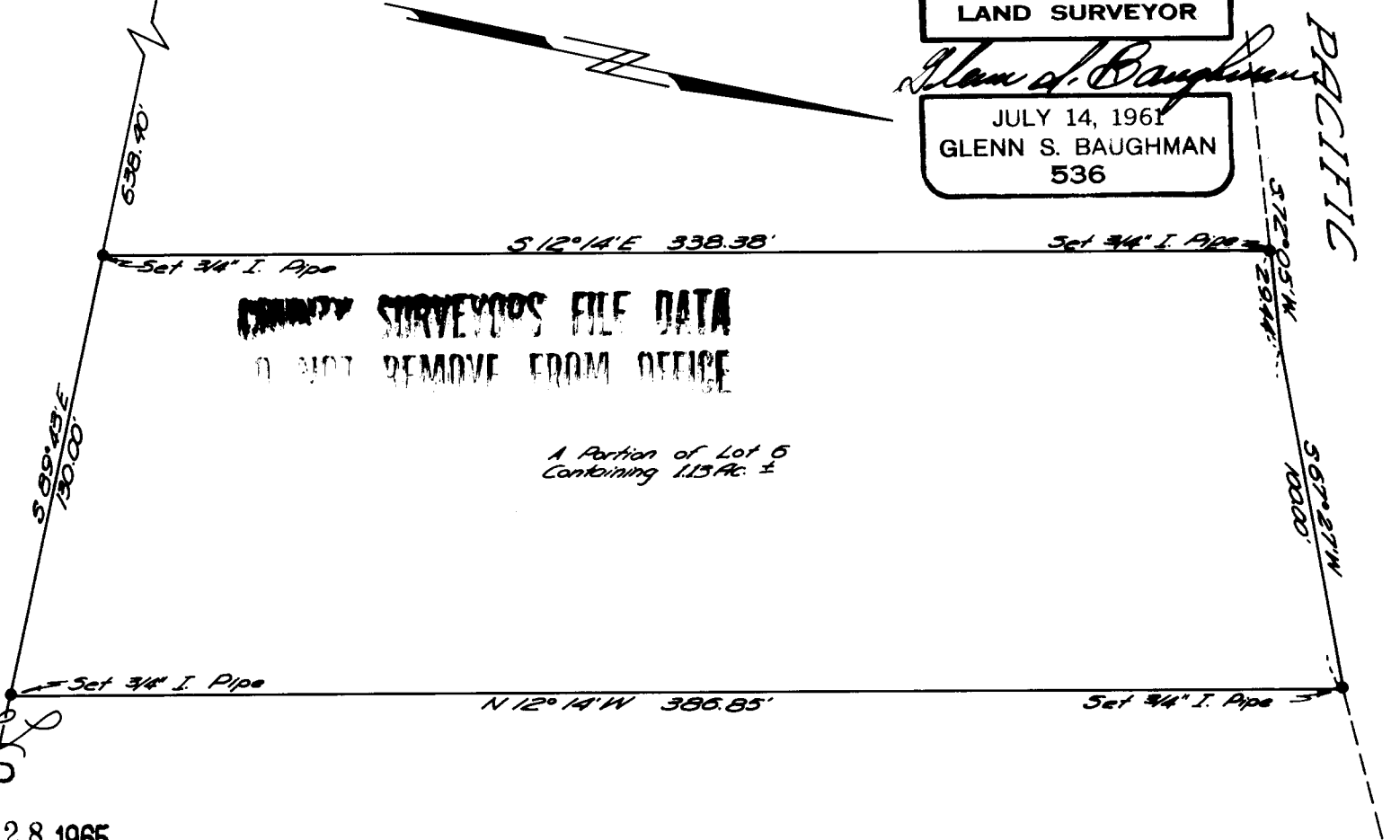
SURVEY FOR PROPERTY DESCRIPTION
 A PORTION OF LOT 6, IN COON'S DILLARD SUB.
 IN SEC. 35 T28S R6W W.M.
 & SEC. 2 T29S R6W W.M.
 Surveyed for Miles Feero, July 1965
 Surveyed by Glenn Baughman, Scale 1"=50'

REGISTERED
 OREGON
 LAND SURVEYOR

Glenn S. Baughman

JULY 14, 1961
 GLENN S. BAUGHMAN
 536

S.W. Cor. of
 Lot 6



COUNTY SURVEYOR'S FILE DATA
 DO NOT REMOVE FROM OFFICE

A Portion of Lot 6
 Containing 1.15 Ac. ±

PACIFIC

H.M.V.

FILED
 RECEIVED
 JUL 28 1965

COUNTY SURVEYOR
 DOUGLAS COUNTY, ORE.