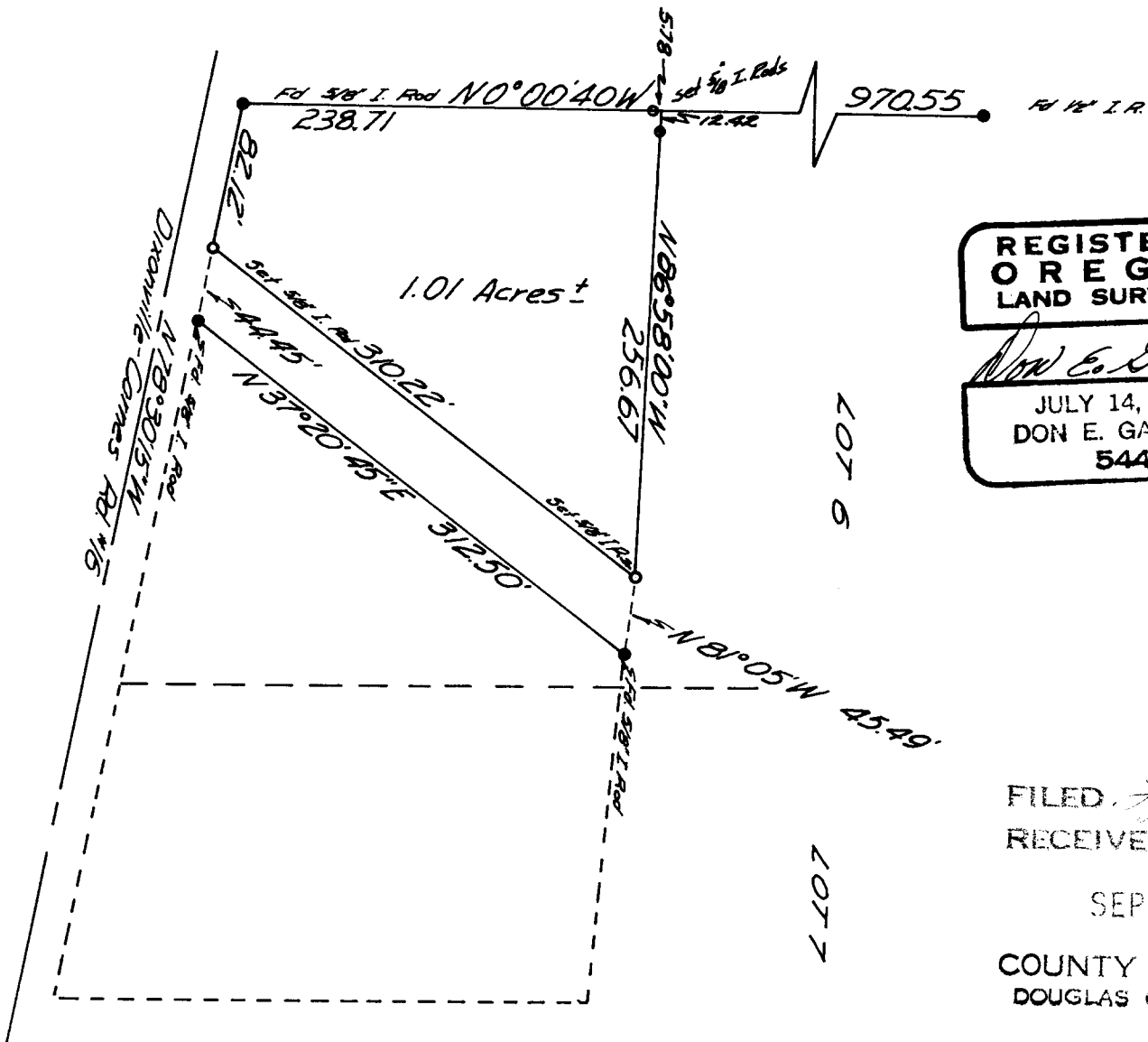
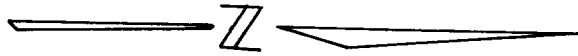


T.25-6 Sec. 15 & 34

A SURVEY IN LOT 6 BLOCK 1 GLENGARY FRUIT LANDS
SURVEYED FOR DWAYNE BROWN SEPT 11, 1965
SURVEYED BY DON E. GARRETT SCALE 1"=100'

BEARINGS ARE BASED ON THE NORTH LINE OF DIXONVILLE-CARNES ROAD NO. 16
S 78° 30' 15" E C.S. MAP FILE 27-61

COUNTY SURVEYORS TAKE DATA
DO NOT REMOVE FROM OFFICE



REGISTERED
OREGON
LAND SURVEYOR

Don E. Garrett

JULY 14, 1961
DON E. GARRETT
544

FILED. *H*
RECEIVED

SEP 15 1965

COUNTY SURVEYOR
DOUGLAS COUNTY, ORE.