

COUNTY SURVEYORS FILE DATA
DO NOT REMOVE FROM OFFICE

SURVEY TO ESTABLISH PROPERTY CORNERS IN SEC. 25 T26S R6W W.M.

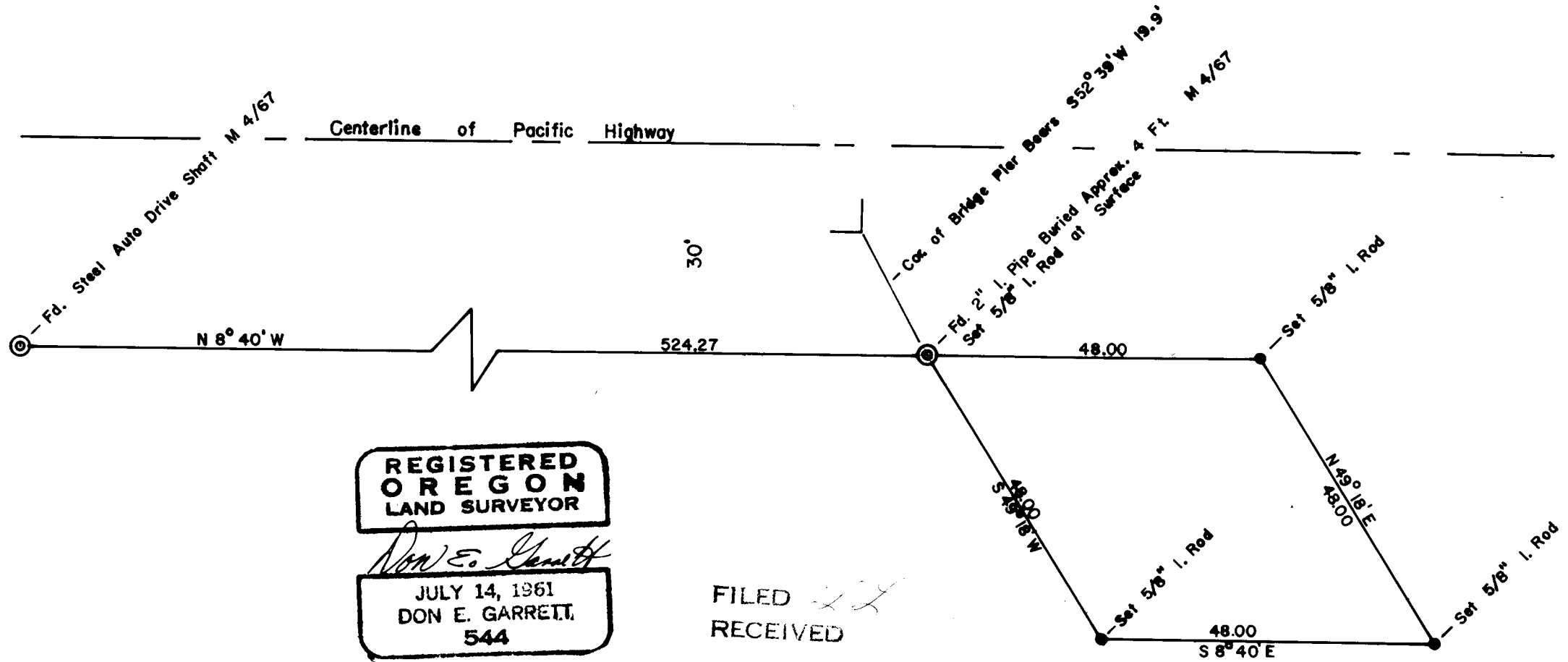
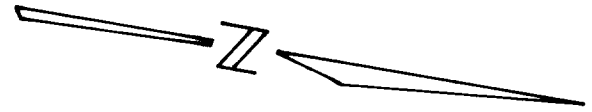
Surveyed for Cornell, Howland, Hayes & Merryfield

Surveyed by Don E. Garrett

August 28, 1965

Scale 1" = 20'

Note: Bearings are based on the East Line of The Pacific Highway N 8° 40' W M 4/67



**REGISTERED
 OREGON
 LAND SURVEYOR**

Don E. Garrett

**JULY 14, 1961
 DON E. GARRETT,
 544**

FILED *LL*
 RECEIVED

SEP 1 1965

**COUNTY SURVEYOR
 DOUGLAS COUNTY, ORE.**