

# SURVEY TO ESTABLISH PROPERTY CORNERS

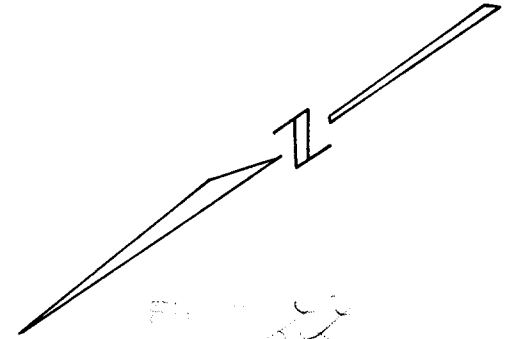
Sec. 15 T28S R6W W.M. COUNTY SURVEYORS FILE DATA

SURVEYED FOR C. E. MABLEY  
 SURVEYED BY DON E. GARRETT  
 AUGUST 19, 1965  
 SCALE 1" = 60'

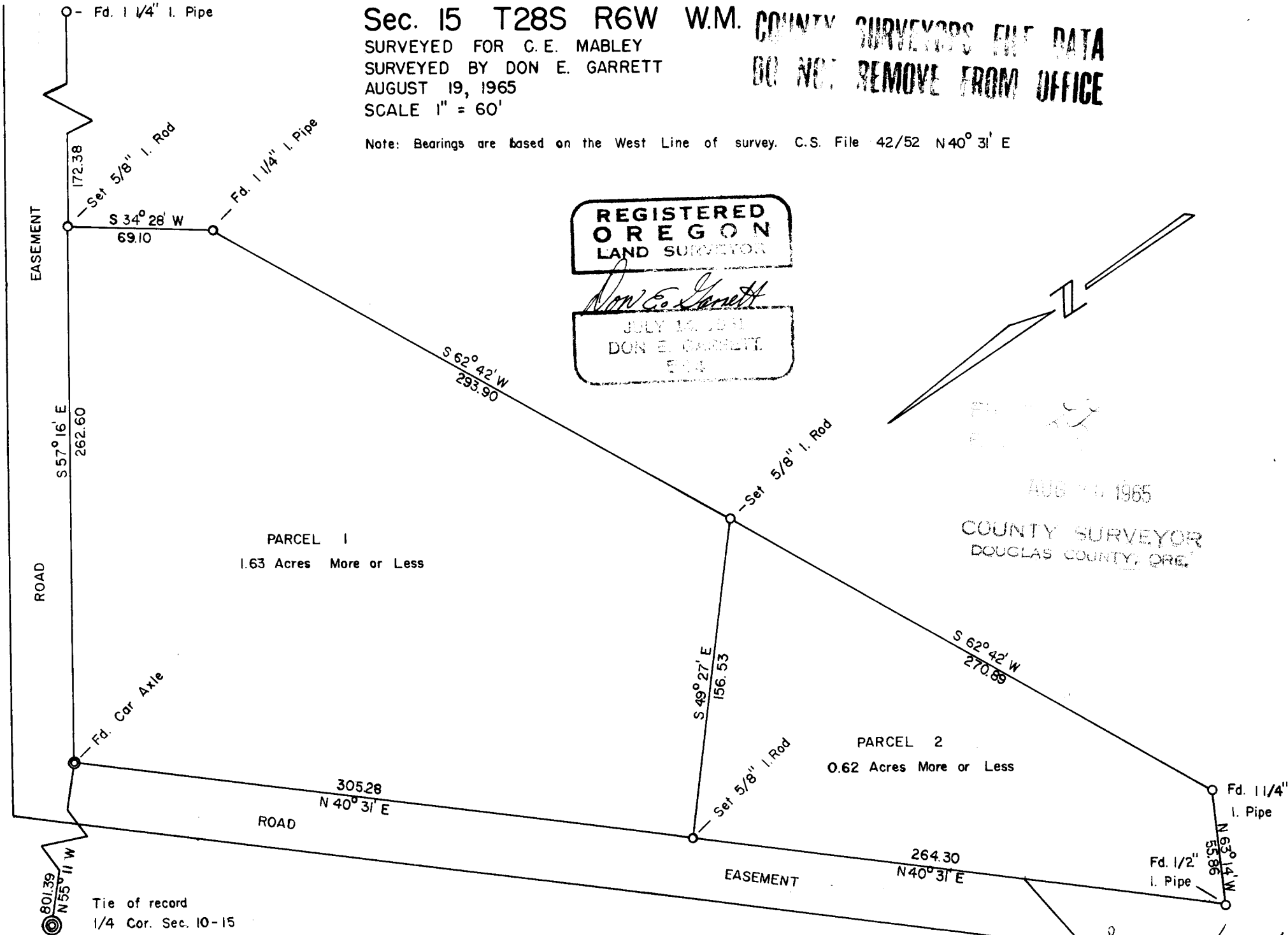
DO NOT REMOVE FROM OFFICE

Note: Bearings are based on the West Line of survey, C.S. File 42/52 N40° 31' E

REGISTERED  
 OREGON  
 LAND SURVEYOR  
*Don E. Garrett*  
 JULY 14, 1961  
 DON E. GARRETT  
 514



AUG 19 1965  
 COUNTY SURVEYOR  
 DOUGLAS COUNTY, ORE.



801.39  
 N55° 11' W  
 Tie of record  
 1/4 Cor. Sec. 10-15

C.S. File No. 51/314-4