

7,25 3 12 2 15

LOT 6 BLOCK 1 PLAT H SUTHERLIN LAND AND WATER CO.

SURVEYED FOR S.A. HUTCHINS & ASSOCIATES CONSTRUCTION CO.
SURVEYED BY DON E. GARRETT
AUGUST 17, 1965
SCALE 1" = 100'

FILED
RECEIVED

AUG 20 1965

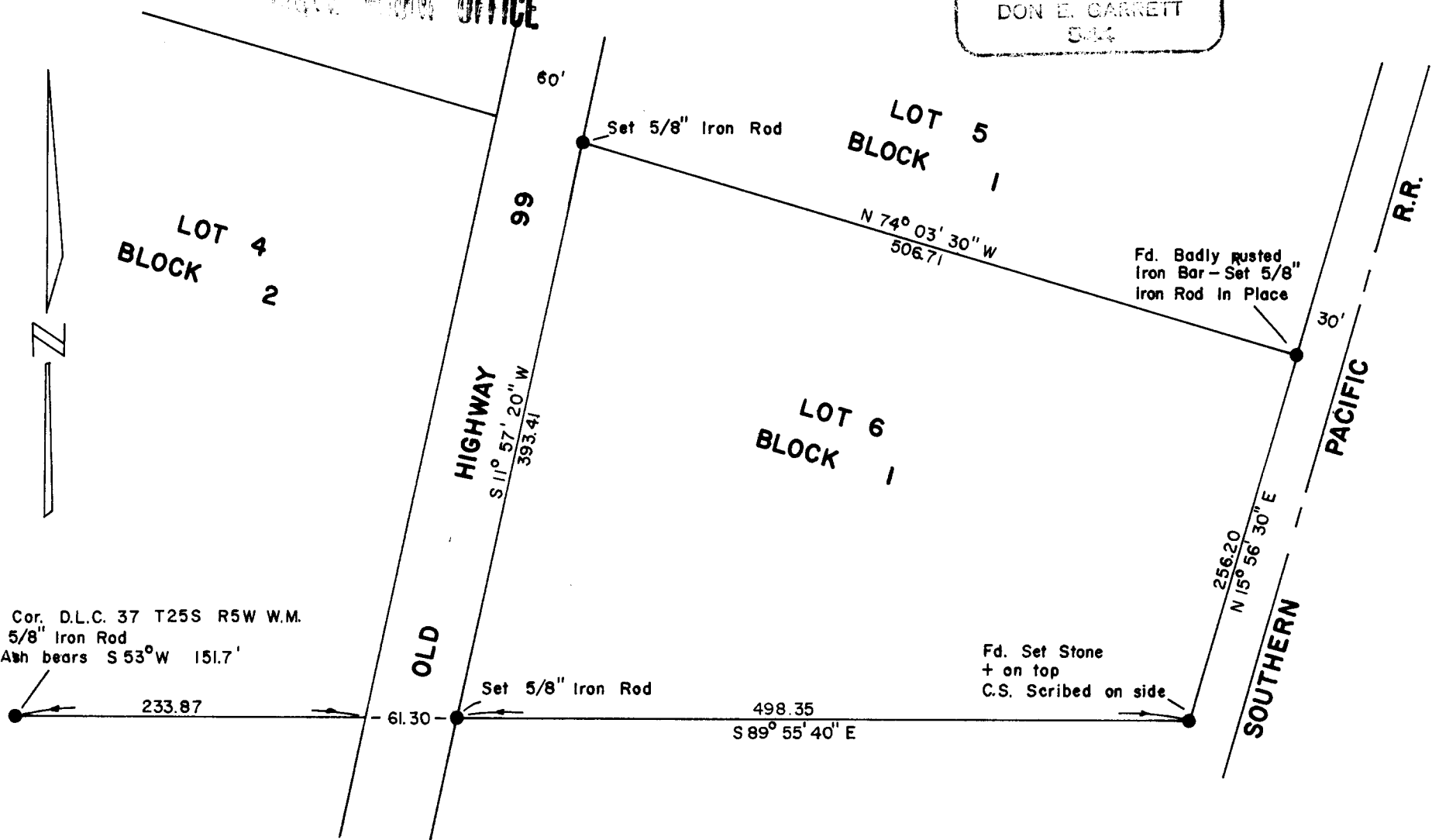
Note: Bearings are based on the South Line of survey M 10-36 N 89° 44' W

COUNTY SURVEYORS FILE DATA
FOR YOUR INFORMATION AND OFFICE

REGISTERED
OREGON
LAND SURVEYOR

Don E. Garrett
JULY 14 1961
DON E. GARRETT
544

COUNTY SURVEYOR
DOUGLAS COUNTY, ORE.



S.E. Cor. D.L.C. 37 T25S R5W W.M.
Fd. 5/8" Iron Rod
13" Ash bears S 53° W 151.7'