

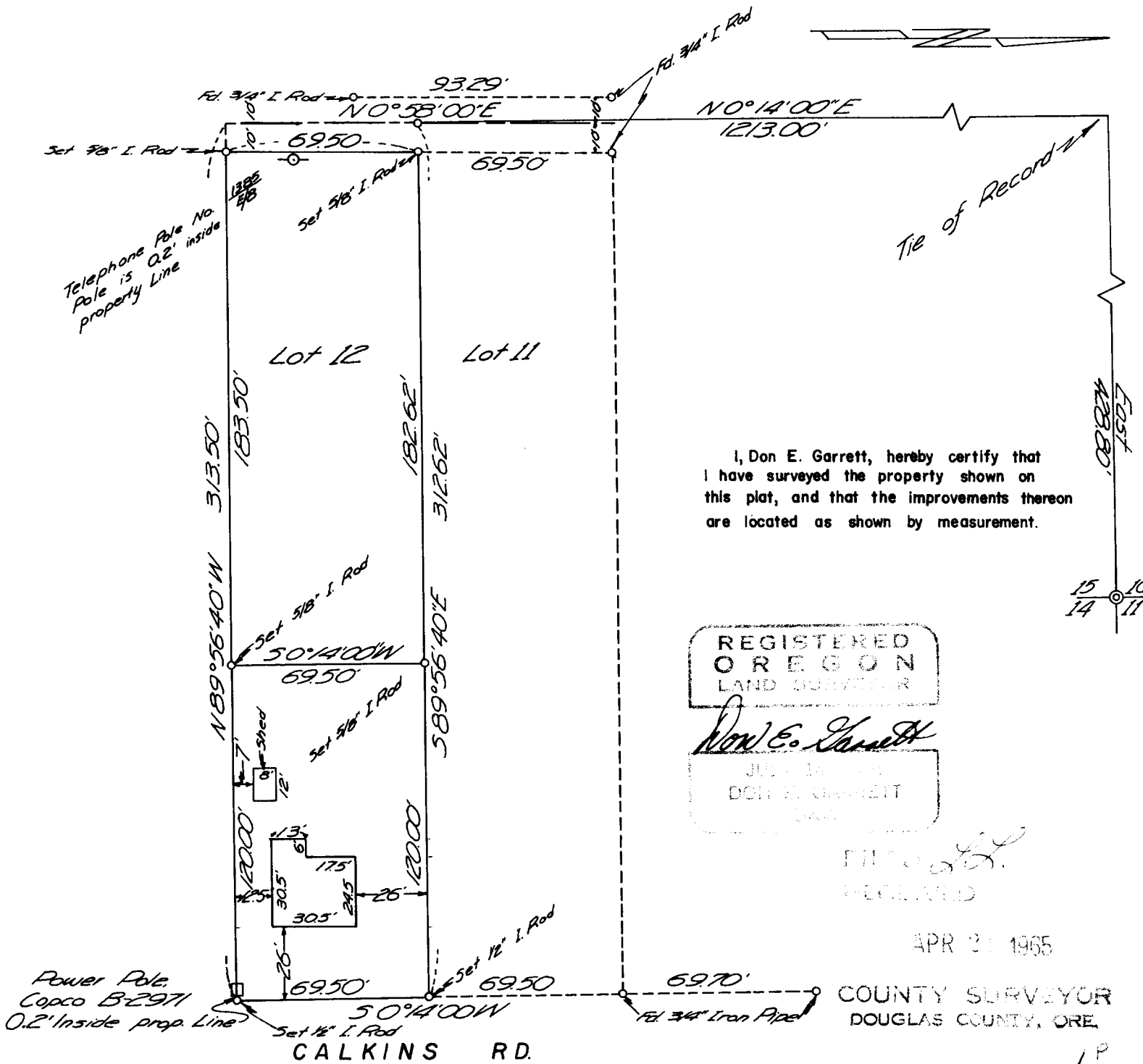
A Portion of Lot 6, Umpqua Fruit Ranch
 Sec. 15, Twsp 27 S. Rng. 6 W. W.M.
 Lot 12 of the unrecorded plat of the C.N.
 Grove Acreage.

Surveyed for Lackey Real Estate
 % Gregory Jenkins

Surveyed by Don Garrett, April 24, 1965

BEARINGS BASED ON WEST LINE OF CALKINS ROAD

COUNTY SURVEYORS FILE DATA
 DO NOT REMOVE FROM OFFICE



I, Don E. Garrett, hereby certify that I have surveyed the property shown on this plat, and that the improvements thereon are located as shown by measurement.

REGISTERED
 OREGON
 LAND SURVEYOR
 Don E. Garrett
 JUL 14 1965
 DON E. GARRETT
 SURV

FILED
 RECEIVED

APR 21 1965

COUNTY SURVEYOR
 DOUGLAS COUNTY, ORE.

C. S. File No. 51/314-1