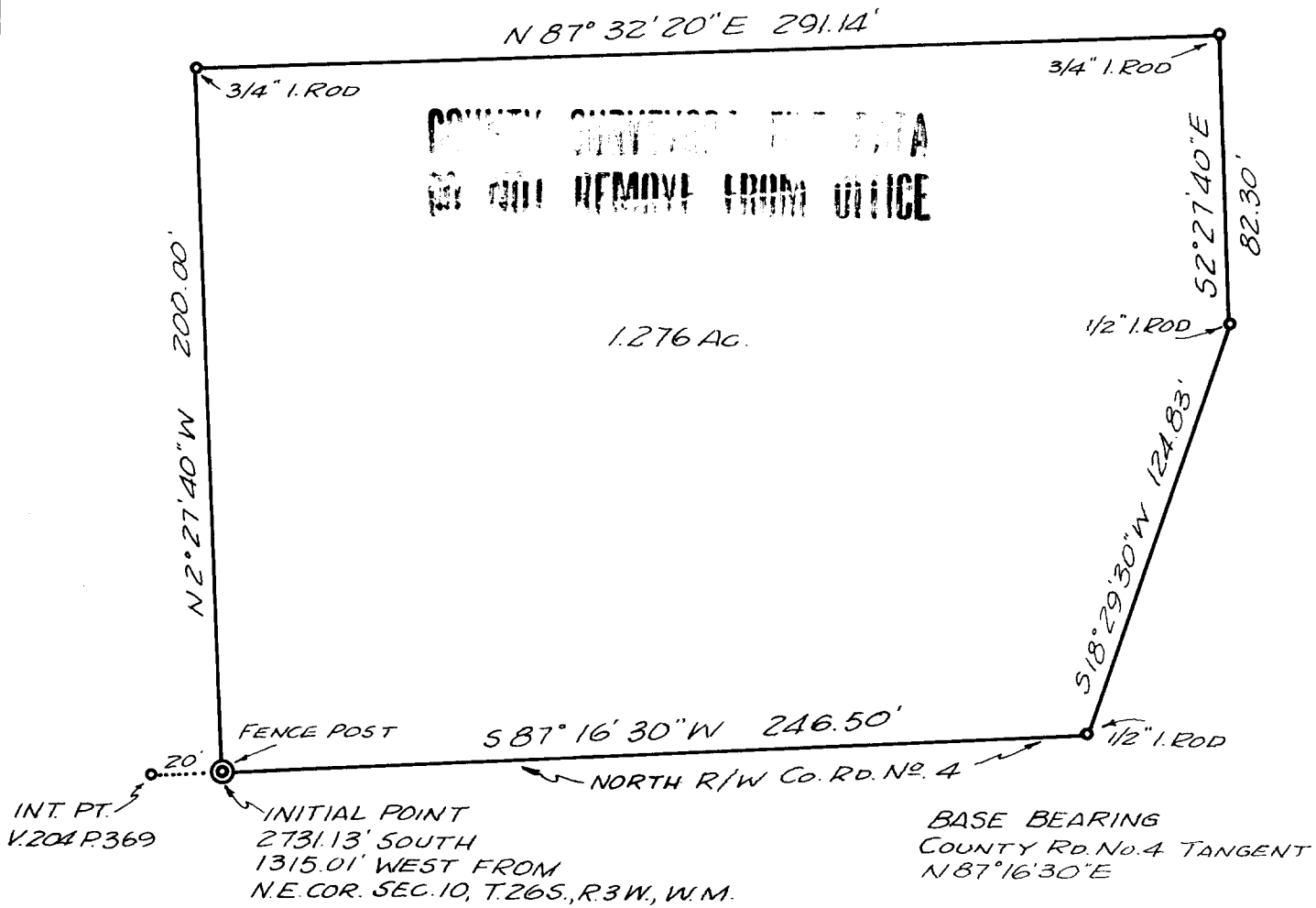


COUNTY SURVEYOR'S FILE DATA
DO NOT REMOVE FROM OFFICE



SURVEY FOR JOHN A. BARNEY
SEC. 10, T. 26 S., R. 3 W., W. M.
SURVEYED BY R. H. GEE
SEPTEMBER, 1965
SCALE 1" = 50'

FILED *Lf*
 RECEIVED

OCT 20 1965

COUNTY SURVEYOR
 DOUGLAS COUNTY, ORE.

