

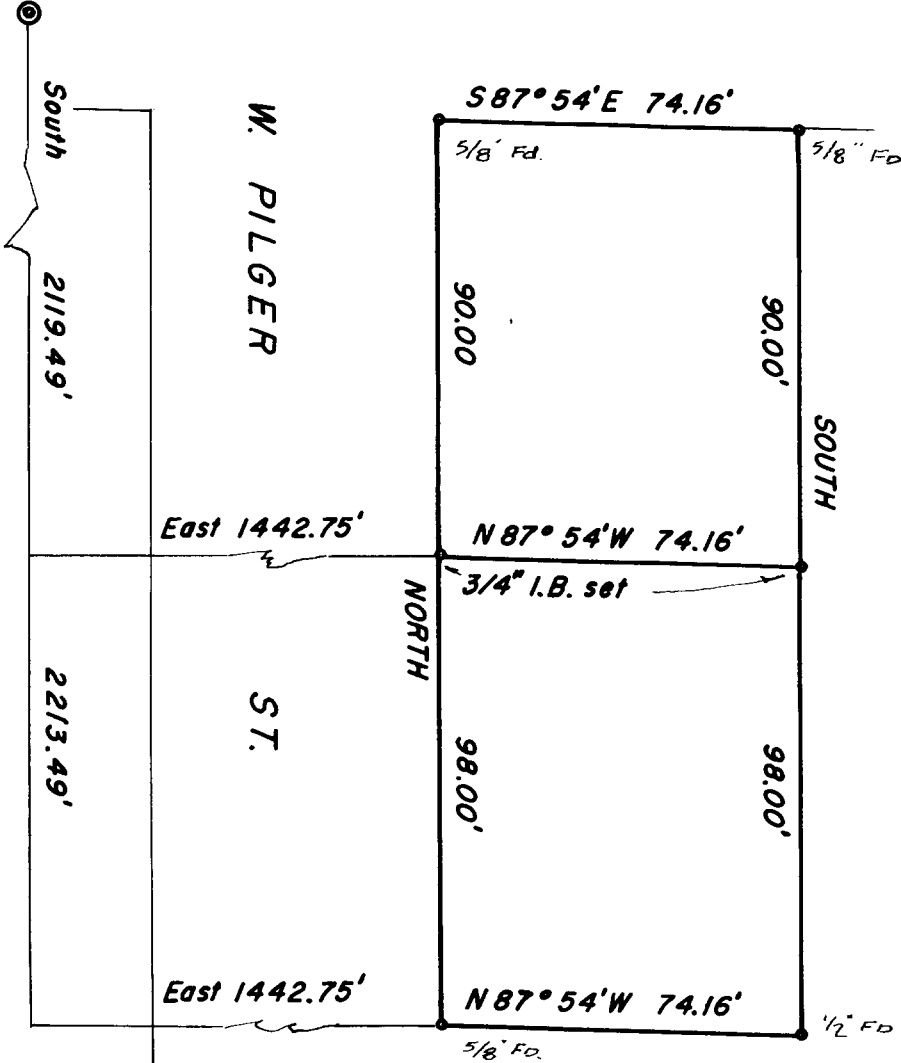
COUNTY SURVEYORS FILE DATA
DO NOT REMOVE FROM OFFICE

FILED *LL*
RECEIVED

JUN 3 1965

COUNTY SURVEYOR
DOUGLAS COUNTY, ORE.

N.W. Cor. D.L.C. 53



SURVEY FOR CRAIG SHORT
ROSEBURG, OREGON
R.H. GEE MAY, 1965
SCALE 1" = 40'

