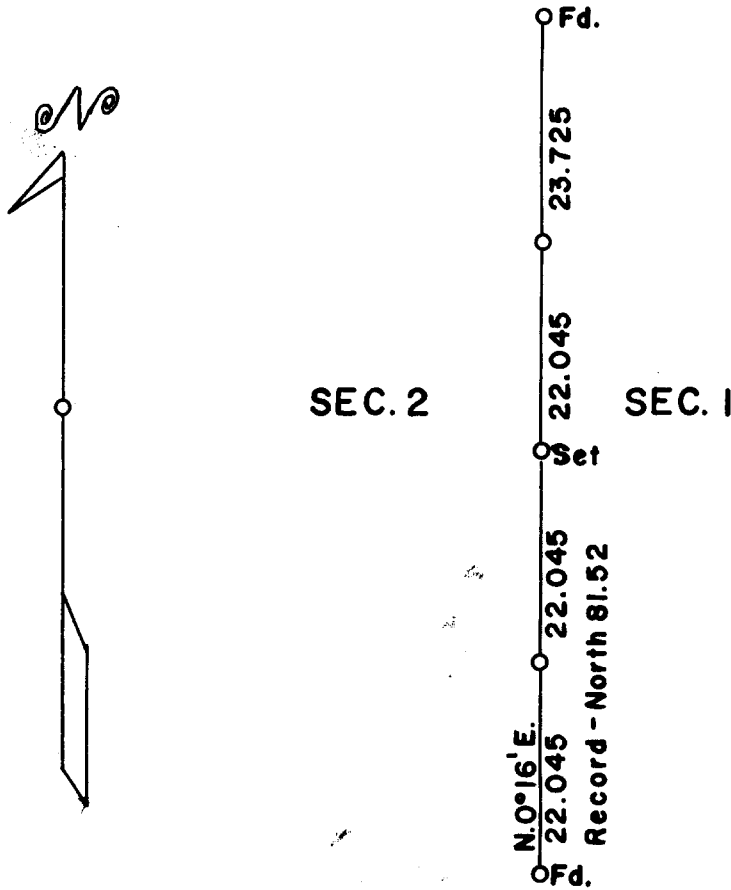


COUNTY SURVEYORS FILE DATA
DO NOT REMOVE FROM OFFICE

T.33S., R.7W., W.M. DOUGLAS COUNTY OREGON

DEPENDENT RESURVEY BETWEEN SECTIONS 1 AND 2



Scale: 1 inch = 20 chains

Mean Magnetic Declination 19°30' East

o = Corner Occupied and Monumented

Survey executed February 4 to 12, 1965

For J. H. Baxter & Co. of Grants Pass, Oregon

FILED
RECEIVED

MAR 4 1965

COUNTY SURVEYOR
DOUGLAS COUNTY, ORE.

Marvin C. Ramsey
MARVIN C. RAMSEY
4-3-65

TOWNSHIP 33 SOUTH, RANGE 7 WEST, W. M., DOUGLAS COUNTY, OREGON

DEPENDENT RESURVEY BETWEEN SECTIONS 1 AND 2

EXECUTED AT THE REQUEST OF J. H. BAXTER & CO.

OF

GRANTS PASS, OREGON

BY

Marvin C. Ramsey, Registered Professional Land Surveyor

Assistant
Paul E. Jonas

Survey commenced February 4, 1965

Survey completed February 12, 1965

FILED
RECEIVED

MAR 1 1965

COUNTY SURVEYOR
DOUGLAS COUNTY, ORE.

S. File No. 51/310b

Chains

The corner point of sections 1, 2, 11 and 12 is determined from the original bearing trees.

A Douglas fir snag 16 ins. in diam., bears N. $37\frac{1}{2}^{\circ}$ E., 78 lks. dist., with axe face; mks. burned out.

A Douglas fir 36 ins. in diam., bears S. 86° E., 24 lks. dist., with partial scribe mks. on the bark.

A Douglas fir remains of a burned out stump bears S. 75° W., 38 lks. dist.

A Douglas fir snag 18 ins. in diam., bears N. 78° W., 34 lks. dist., with mks. T33S R7 on the bark.

Set an iron pipe 3 ft. long 2 ins. in diam., 28 ins. in the ground, from which new bearing trees

A Douglas fir 34 ins. in diam., bears N. $61\frac{1}{2}^{\circ}$ E., 87 lks. dist., mkd. T33S R7W S1 RSh04 BT

A Douglas fir 28 ins. in diam., bears S. 59° W., 41 lks. dist., mkd. T33S R7W S11 RSh04 BT

A Douglas fir 26 ins. in diam., bears N. 82° W., 185 lks. dist., mkd. T33S R7W S2 RSh04 BT

The geographic position of this corner is latitude $42^{\circ} 43' 26''$ N., and longitude $123^{\circ} 28' 54''$ W. The observed magnetic declination is 18° East.

February 4, 1965: at 2 .m., P.S.T., I set off $42^{\circ} 43\frac{1}{2}'$ N. on the latitude arc; $16^{\circ} 2\frac{1}{2}'$ S., on the declination arc; of my Buff solar transit No. 33236 and determine a meridian with the solar attachment. Foresight and backsight method was used throughout this survey.

Thence -

N. $0^{\circ} 16'$ E., on true line between sections 1 and 2

22.045 Point for the South $1/16$ sec. cor. at proportionate dist.

Set an iron pipe 3 ft. long 1 in. in diam., 28 ins. in the ground, mkd. RSh04, from which

A Douglas fir 22 ins. in diam., bears S. 17° E., 217 lks. dist., mkd. S $1/16$ S1 RSh04 BT

A madrona 12 ins. in diam., bears S. 60° W., 72 lks. dist., mkd. S $1/16$ S2 RSh04 BT

44.09 Point for the $\frac{1}{4}$ sec. cor. at proportionate dist., fail to find any evidence of the original cor. after careful search.

Set an iron pipe 3 ft. long $1\frac{1}{2}$ ins. in diam., 28 ins. in the ground, mkd. RSh04, from which

A Douglas fir 10 ins. in diam., bears S. $10\frac{1}{2}^{\circ}$ E., 112 lks. dist., mkd. $\frac{1}{4}$ S1 RSh04 BT

A madrona 8 ins. in diam., bears N. 79° W., 34 lks. dist., mkd. $\frac{1}{4}$ S2 RSh04 BT

66.135 Point for the North $1/16$ sec. cor. at proportionate dist.

Set an iron pipe 3 ft. long 1 in. in diam., 28 ins. in the ground, mkd. RSh04, from which

51/310c

T. 33 S., R. 7 W.

Chains

A sugar pine 10 ins. in diam., bears N. 34° E., 46 lks.
dist., mkd. N 1/16 S1 R 404 BT

A Douglas fir 22 ins. in diam., bears S. 84° W., 86 lks.
dist., mkd. N 1/16 S2 R 404 BT

89.86 To the sec. cor. of secs. 1 and 2 determined from the
original bearing trees

A cedar sawed stump 36 ins. in diam., bears S. 32° E.,
20 lks. dist., with axe mks., scribe mks. burned out.

A Douglas fir sawed stump 32 ins. in diam., bears S. 45° W.,
28 lks. dist., with a partial scribe mark exposed.

A Douglas fir snag 56 ins. in diam., bears N. 60° W., 21 lks.
dist., with axe face; mks. obliterated from decay.

Set an iron pipe 3 ft. long 2 ins. in diam., 28 ins. in the
ground, mkd. R 404 ; from which

An unmarked iron pipe 1 in. in diam., 6 ins. above ground,
bears S. 53° E., 6 lks. dist.

New bearing trees

A Douglas fir 10 ins. in diam., bears S. 57° E., 36 lks.
dist., mkd. T33S R7W S1 R 404 BT

A Douglas fir 16 ins. in diam., bears S. 10° W., 10 lks.
dist., mkd. T33S R7W S2 R 404 BT.

I hereby certify that the bearing of the line recorded in this survey was
determined by a solar observation and that the survey described in
the foregoing field notes was executed in conformity with the laws
of the State of Oregon.

ALBERT W. RAMBERG

FILED
RECEIVED

MAR 14 1965

COUNTY SURVEYOR
DOUGLAS COUNTY, ORE.

U.S. PLAN 51/310.d