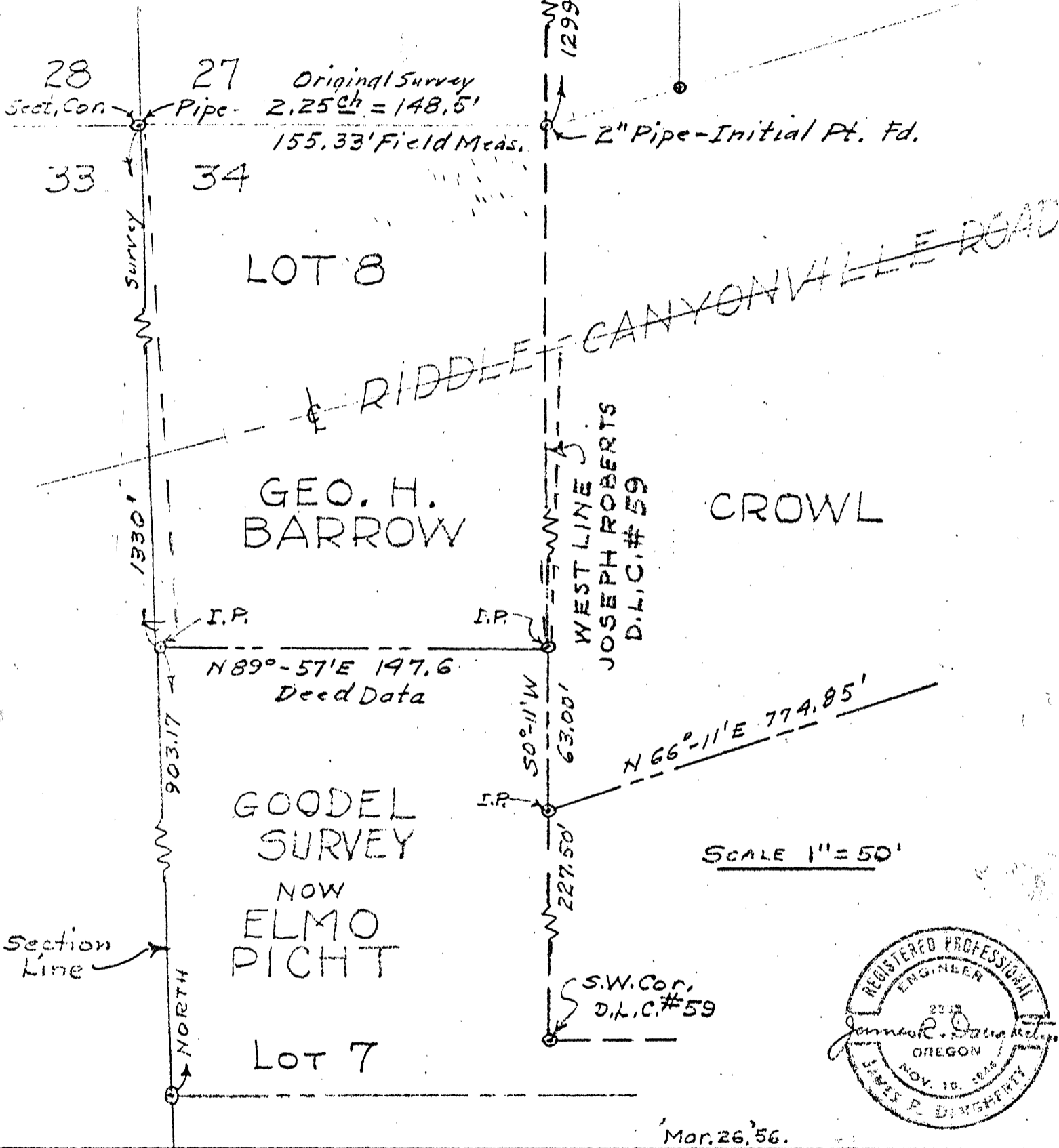


LOT 8 - SECTION 34 - T30S - R5W - W.M. DOUGLAS COUNTY OREGON

PLATTED BY
JAMES R. DAUGHERTY
CIVIL-SANITARY ENGINEER
ROSEBURG, ORE.

George H. Barrow



COUNTY SURVEYORS FILE DATA
DO NOT REMOVE FROM OFFICE

FILED
RECEIVED

APR 14 1967

COUNTY SURVEYOR
DOUGLAS COUNTY, ORE.

*Mr. Garrison, attorney.
Print only filed*

C. S. File No. 51/308-7