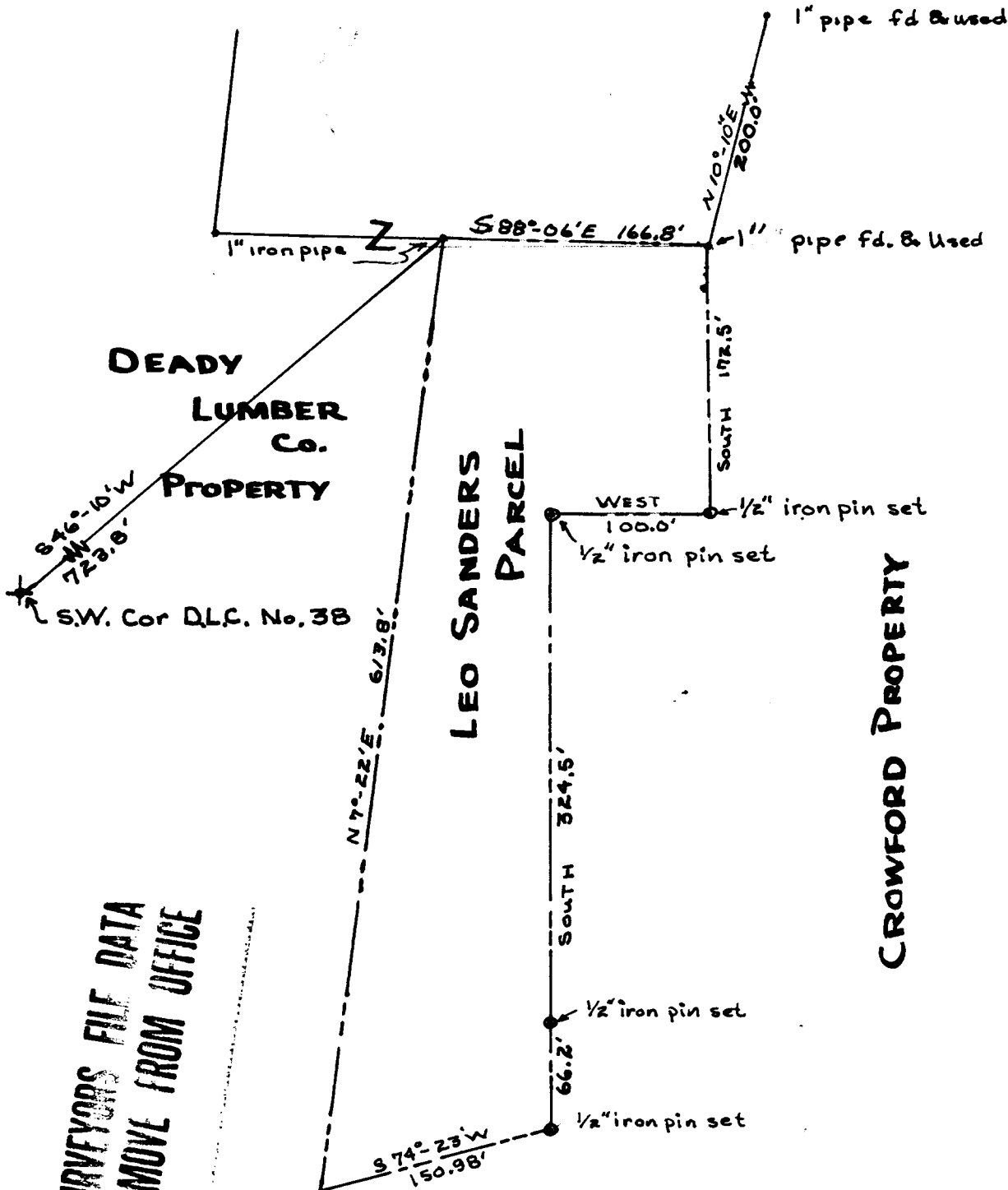


LEO SANDERS' PARCEL in SECT 32-T~~25~~5-R5W,W.M.

DOUGLAS COUNTY ORE.

25



COUNTY SURVEYORS FILE DATA
 DO NOT REMOVE FROM OFFICE

FILED *LL*
 RECEIVED

MAY 24 1965

COUNTY SURVEYOR
 DOUGLAS COUNTY, ORE.

SCALE 1"=100'
 MAY 22, 1965

PLATTED BY
JAMES R. DAUGHERTY
 CIVIL-SANITARY ENGINEER
 WINSTON, OREGON



File No. 51/308-6