

FILED
RECEIVED

TERESA M. LONG PARCEL

APR 12 1965

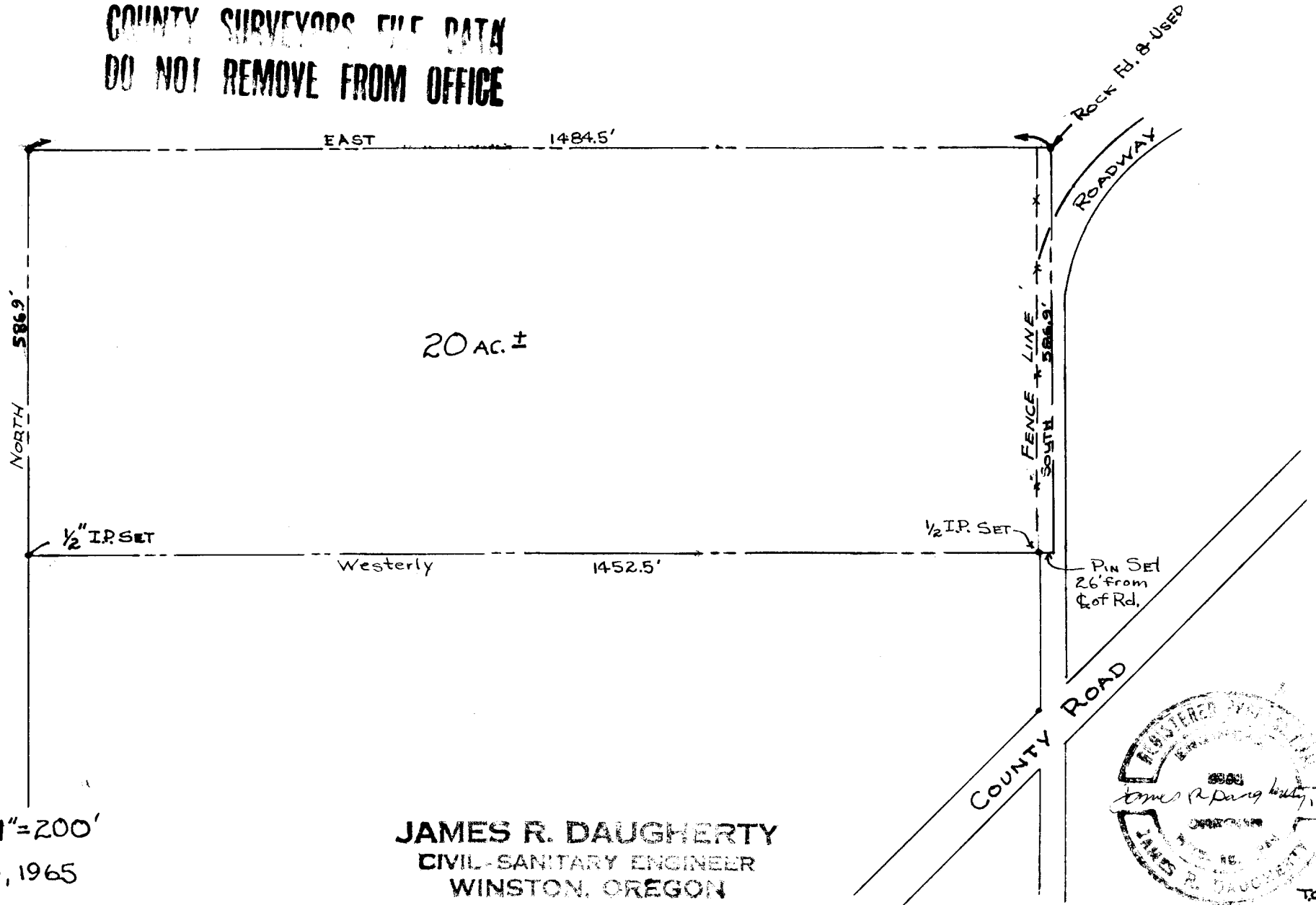
IN SECT 2-T26S-R7W.W.M.-N. 1/2 D.L.C. 43

COUNTY SURVEYOR
DOUGLAS COUNTY, ORE.

DOUGLAS COUNTY, ORE.

COUNTY SURVEYORS FILE DATA
DO NOT REMOVE FROM OFFICE

N



20 AC. ±

NORTH 586.9'

EAST 1484.5'

1/2" I.P. SET

Westerly 1452.5'

1/2 I.P. SET

PIN SET
26' from
E of Rd.

COUNTY ROAD

SCALE: 1"=200'

April 10, 1965

JAMES R. DAUGHERTY
CIVIL-SANITARY ENGINEER
WINSTON, OREGON

