

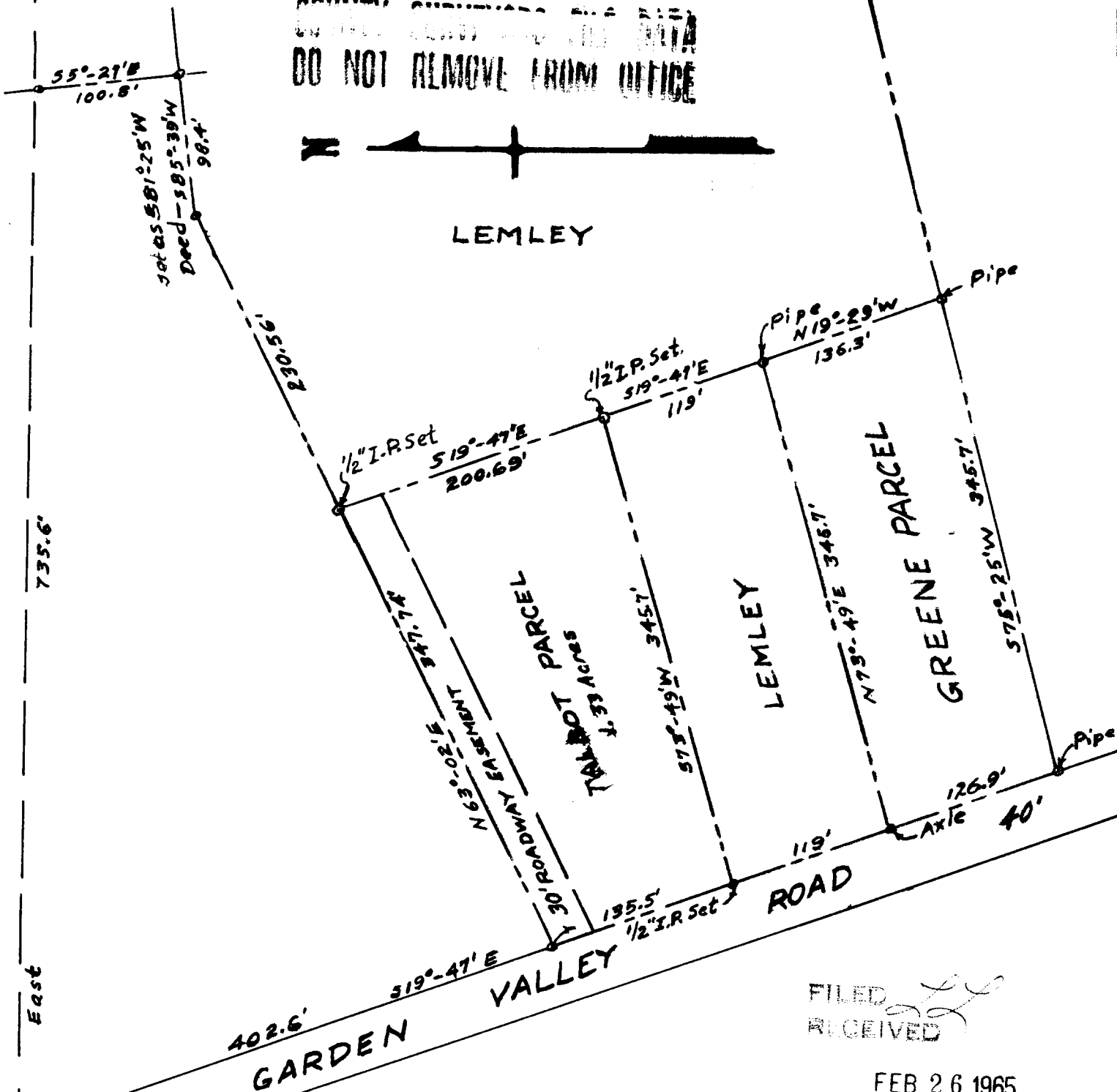
LEMLEY PROPERTY IN D.L.C. No. 51-T27S-R6W-W.M. Sec. 3E

DOUGLAS COUNTY, OREGON

COUNTY SURVEYOR'S OFFICE
DO NOT REMOVE FROM OFFICE



LEMLEY



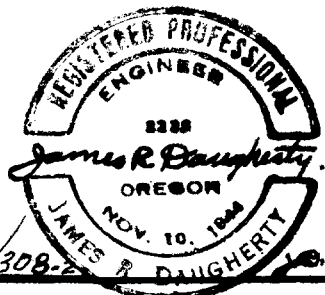
FILED
RECEIVED

FEB 26 1965

COUNTY SURVEYOR
DOUGLAS COUNTY, ORE.

SCALE 1" = 100'

JAMES R. DAUGHERTY
CIVIL-SANITARY ENGINEER
WINSTON, OREGON



N.W. Cor.
D.L.C. No. 51

Feb. 3, 1965

File No. 51-308-2